



OVER 60?

Secure this property
for up to **59% less!**

Price

£230,000

Freehold

2x  1x  1x 

**Steinway House, Main
Road, Southbourne,
Emsworth, West Sussex,
PO10**

cubitt & west
Helping you move forwards



Main features

- Requested Southbourne location
- Offered with no forward chain
- Close proximity to local amenities and transport links, including wonderful walks around the area
- Private patio garden offering an excellent degree of privacy and allocated parking.

Accommodation

GROUND FLOOR

Hallway

Lounge: 22'11 x 9'9 (6.99m x 2.97m)

Kitchen : 14'5 x 8'0 (4.40m x 2.44m)

Bedroom 1: 11'6 x 10'10 (3.51m x 3.30m)

Bedroom 2: 11'6 x 6'2 (3.51m x 1.88m)

Bathroom

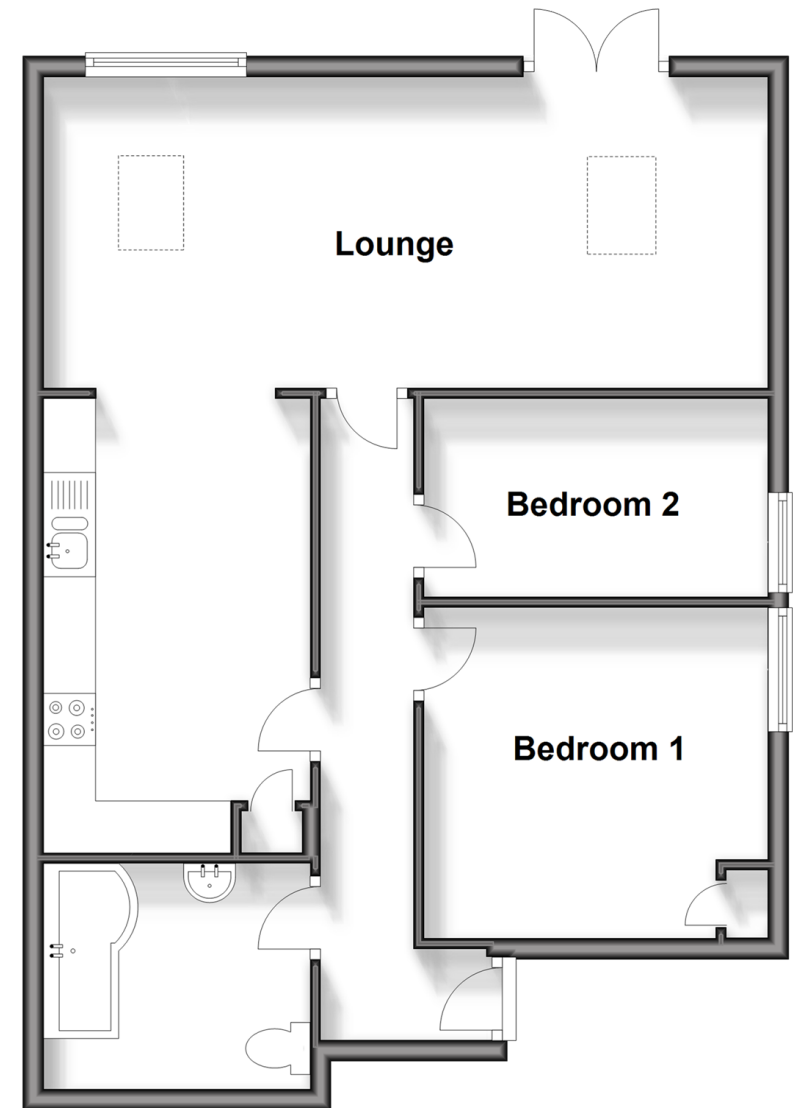
OUTSIDE

Patio Garden

Allocated Parking

Ground Floor

Approx. 63.1 sq. metres (679.3 sq. feet)



Call Emsworth - 01243 377888 ■ cubittandwest.co.uk

- Legal advice should be taken to verify fixtures/fittings, planning, alterations and/or lease details
- Appliances & services are untested, dimensions are approximate and floor plans are not to scale
- Through a Homewise Home For Life Plan people aged 60+ can secure this property for up to 59% less, by purchasing a Lifetime Lease.



44607761/20241116/JH/EG