



Price
£380,000

Freehold

3x  1x  1x 

**Alfrey Close,
Southbourne, West
Sussex, PO10**

OVER 60?

Secure this property
for up to **59% less!**

cubitt&west
Helping you move forwards



Main features

- Great size family home in desirable location
- Bright and spacious accommodation throughout
- Allocated parking
- Situated close to local amenities and transport links
- Coastal and rural walks nearby
- No forward chain

Accommodation

GROUND FLOOR

Entrance Hall

Lounge: 16'9 x 16'2 (5.11m x 4.93m)

Kitchen : 14'1 x 7'7 (4.30m x 2.31m)

Cloakroom

FIRST FLOOR

Landing

Bedroom 1: 16'7 x 9'4 (5.06m x 2.85m)

Bedroom 2: 13'9 x 8'6 (4.19m x 2.59m)

Bedroom 3: 9'7 x 7'2 (2.92m x 2.19m)

Bathroom

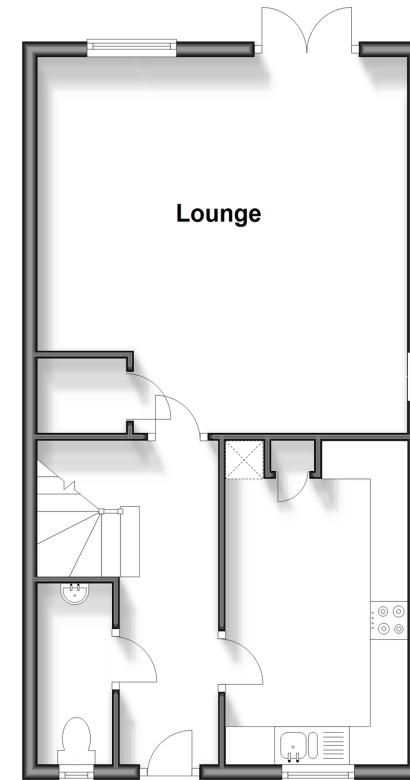
OUTSIDE

Rear Garden

Off Road Parking

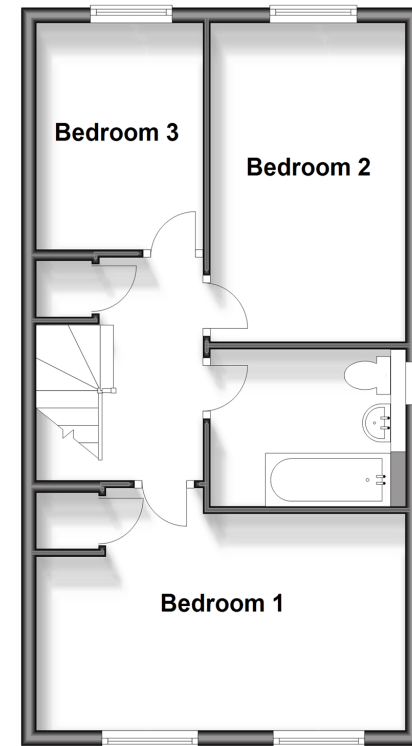
Ground Floor

Approx. 46.1 sq. metres (496.1 sq. feet)



First Floor

Approx. 46.1 sq. metres (496.1 sq. feet)



Call Emsworth - 01243 377888 ■ cubittandwest.co.uk

- Legal advice should be taken to verify fixtures/fittings, planning, alterations and/or lease details
- Appliances & services are untested, dimensions are approximate and floor plans are not to scale
- Through a Homewise Home For Life Plan people aged 60+ can secure this property for up to 59% less, by purchasing a Lifetime Lease.



44607725/20241116/JH/EG