

OVER 60?

Secure this property
for up to **59% less!**



Price

£850,000

Freehold

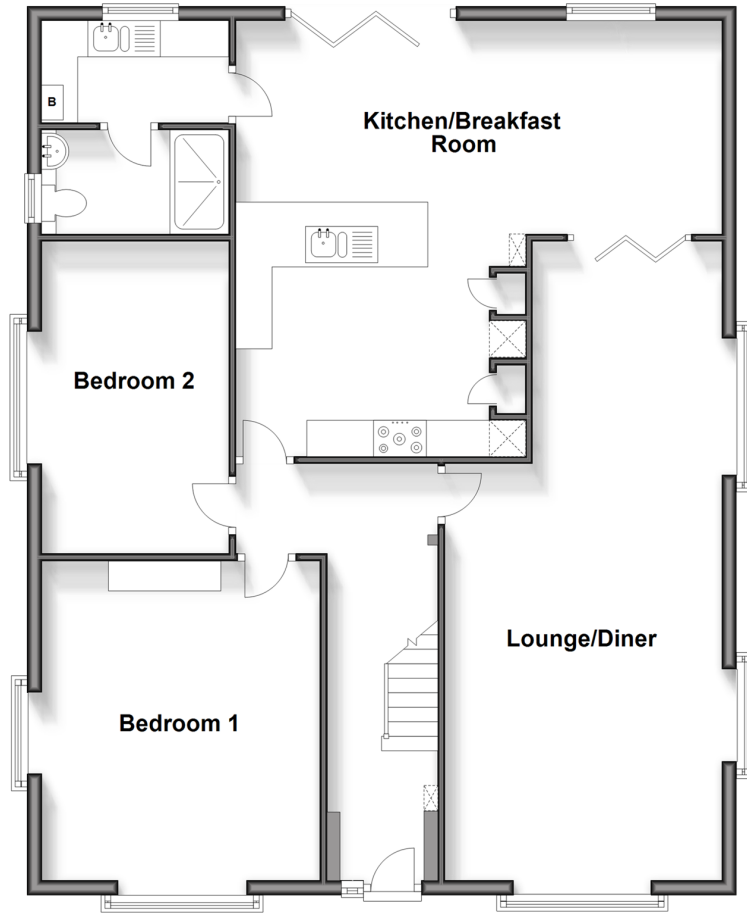
5x  2x  1x 

Main Road, Southbourne, Emsworth,
Hampshire, PO10

cubitt & west
Helping you move forwards

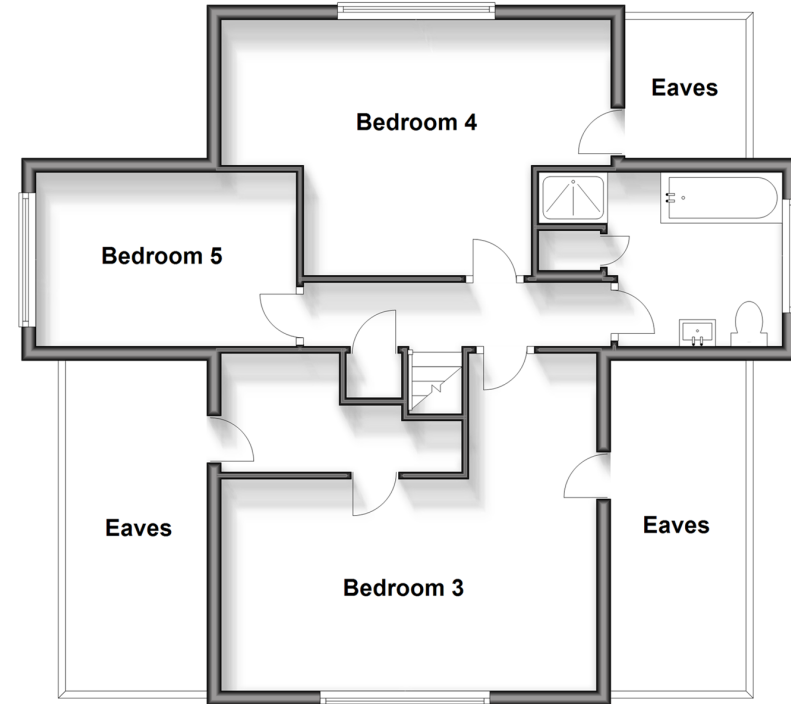
Ground Floor

Approx. 112.5 sq. metres (1210.8 sq. feet)



First Floor

Approx. 60.8 sq. metres (654.1 sq. feet)



Accommodation

GROUND FLOOR

Hallway

Lounge/Diner: 28'6 x 12'6 (8.69m x 3.81m)

Kitchen/Breakfast Room : 21'8 x 20'2 (6.61m x 6.15m)

Utility Room

Shower Room

Bedroom 1: 13'5 x 8'5 (4.09m x 2.57m)

Bedroom 2: 14'1 x 12'4 (4.30m x 3.76m)

Bathroom

OUTSIDE

Driveway

Rear Garden

FIRST FLOOR

LANDING

Bedroom 3: 16'9 x 15'2 (5.11m x 4.63m)

Bedroom 4: 17'10 x 11'5 (5.44m x 3.48m)

Bedroom 5: 11'4 x 7'8 (3.46m x 2.34m)



Main features

- Immaculate 5 bedroom detached family home
- Extended kitchen come family space to rear of property
- Large workshop with power and light
- Property backs onto paddocks
- Short distance from Emsworth town centre and transport links
- Perfect for a growing or established family



Nearest Schools

Primary Schools: Southbourne Junior School 0.8 miles, St James C of E Controlled Primary 1.0 miles, Emsworth Primary 1.0 miles

Secondary Schools: Bourne Community College 0.5 miles,



Transport Information

Train Stations: Emsworth 0.6 miles, Southbourne 0.7 miles, Nutbourne 1.8 miles



Address

Main Road, Southbourne, Emsworth, Hampshire, PO10



Directions

For directions to this property please contact us.



cubitt&west
Helping you move forwards

Call Emsworth Branch 01243 377888 ■ cubittandwest.co.uk



- Legal advice should be taken to verify fixtures/fittings, planning, alterations and/or lease details
- Appliances & services are untested, dimensions are approximate and floor plans are not to scale
- Through a Homewise Home For Life Plan people aged 60+ can secure this property for up to 59% less, by purchasing a Lifetime Lease.

EPC RATING

CURRENT:	POTENTIAL:
E(46)	D(58)

44607486/20231117/SR/DU