



Price

£380,000

Freehold

2x  1x  2x 

**Nore Crescent,
Emsworth, Hampshire,
PO10**

OVER 60?

Secure this property
for up to **59% less!**

cubitt & west
Helping you move forwards



Main features

- Detached bungalow in need of modernisation
- Sunny aspect rear garden
- Highly sought after Emsworth location
- Ideal for someone looking to put their own stamp on the property
- No forward chain

Accommodation

GROUND FLOOR

Entrance Hallway

Kitchen : 12'6 x 10'7 (3.81m x 3.23m)

Conservatory : 23'3 x 5'9 (7.09m x 1.75m)

Lounge : 15'5 x 11'2 (4.70m x 3.41m)

Dining Room : 8'4 x 7'10 (2.54m x 2.39m)

Bedroom 1: 14'0 x 11'5 (4.27m x 3.48m)

Bedroom 2 : 12'0 x 8'5 (3.66m x 2.57m)

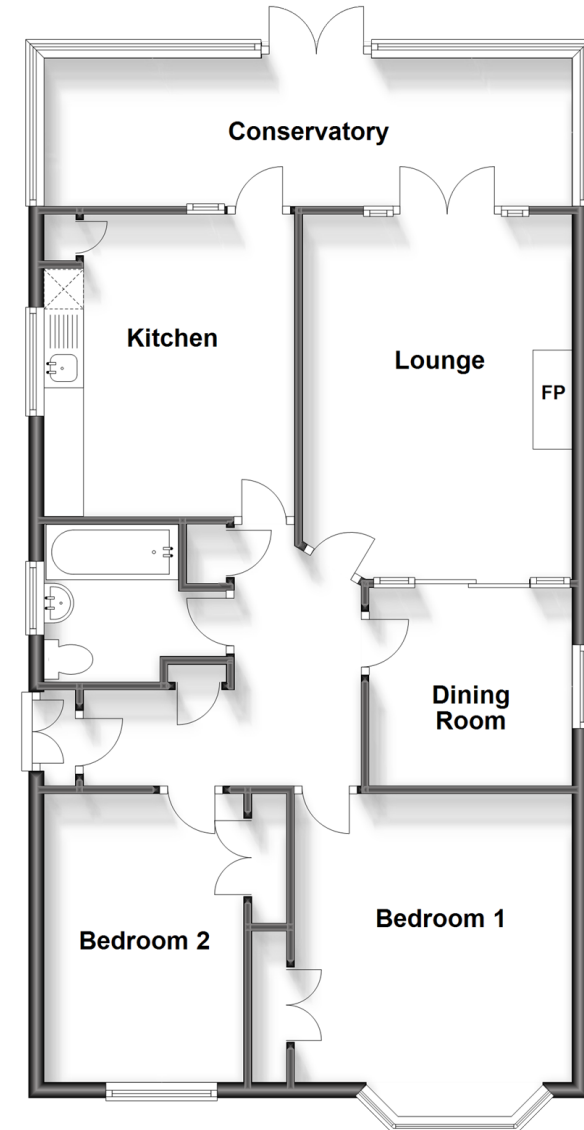
Bathroom

OUTSIDE

Front & Rear Gardens

Garage & Off Road Parking

Ground Floor
Approx. 87.0 sq. metres (936.6 sq. feet)



Call Emsworth - 01243 377888 ■ cubittandwest.co.uk

- Legal advice should be taken to verify fixtures/fittings, planning, alterations and/or lease details
- Appliances & services are untested, dimensions are approximate and floor plans are not to scale
- Through a Homewise Home For Life Plan people aged 60+ can secure this property for up to 59% less, by purchasing a Lifetime Lease.



44607662/20240410/SR/EG