



Flat 23 Adlington House, 27 Nelstrop Road, Heaton Chapel,  
Stockport, SK4 5LT

JohnMellor



Superb view over gardens and fields! This delightful one bedroom retirement apartment forms part of the outstanding Adlington House development which is designed to provide independent luxurious living for the over 60's. The flat is located on the first floor and access is by both stairs and a lift. Spacious rooms include a private hall, an excellent utility/store room, a good size lounge/diner with access to a balcony with a fantastic view over gardens and fields, a well equipped kitchen and a fantastic wet room.

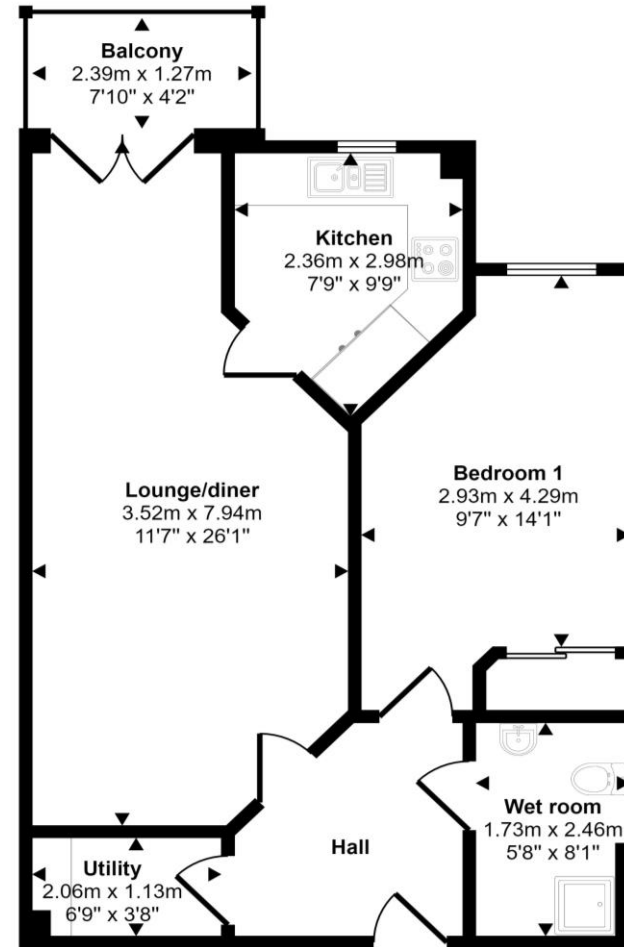


There is a strong sense of community in Adlington House with a host of communal events to choose from and the development is surrounded by mature gardens and off road parking is provided. The property is leasehold for 125 years from 2013 (no ground rent) and the service and wellbeing charges come to approximately £180.00 per week. Adlington House is run by the Methodist Housing Association and separate care services are available from them on request. No chain involved and a viewing is highly recommended.



Energy Efficiency Rating		
	Current	Potential
<i>Very energy efficient - lower running costs</i>		
(92 plus) <b>A</b>		
(81-91) <b>B</b>	84	84
(69-80) <b>C</b>		
(55-68) <b>D</b>		
(39-54) <b>E</b>		
(21-38) <b>F</b>		
(1-20) <b>G</b>		
<i>Not energy efficient - higher running costs</i>		
<b>England &amp; Wales</b>	EU Directive 2002/91/EC	

Approx Gross Internal Area  
57 sq m / 616 sq ft



First Floor

This floorplan is only for illustrative purposes and is not to scale. Measurements of rooms, doors, windows, and any items are approximate and no responsibility is taken for any error, omission or mis-statement. Icons of items such as bathroom suites are representations only and may not look like the real items. Made with Made Snappy 360.

**JohnMellor**

182 Heaton Moor Road, Heaton Moor,  
Stockport, Cheshire, SK4 4DU  
Tel: 0161 442 4142  
sales@john-mellor.co.uk  
www.john-mellor.co.uk

IMPORTANT! These particulars and floor plans are set out as a general outline only for the guidance of intending purchasers or lessees and do not constitute part of an offer or contract, nor may they be regarded as representations. All interested parties must themselves verify their accuracy. All measurements are approximate. The agents have not tested any apparatus, equipment, fixtures, fittings or services and so cannot verify that they are in working order, or fit for purpose. The buyer is advised to obtain verification from their solicitor or surveyor. J273