



52 Love Lane, Heaton Norris, Stockport SK4 1JA

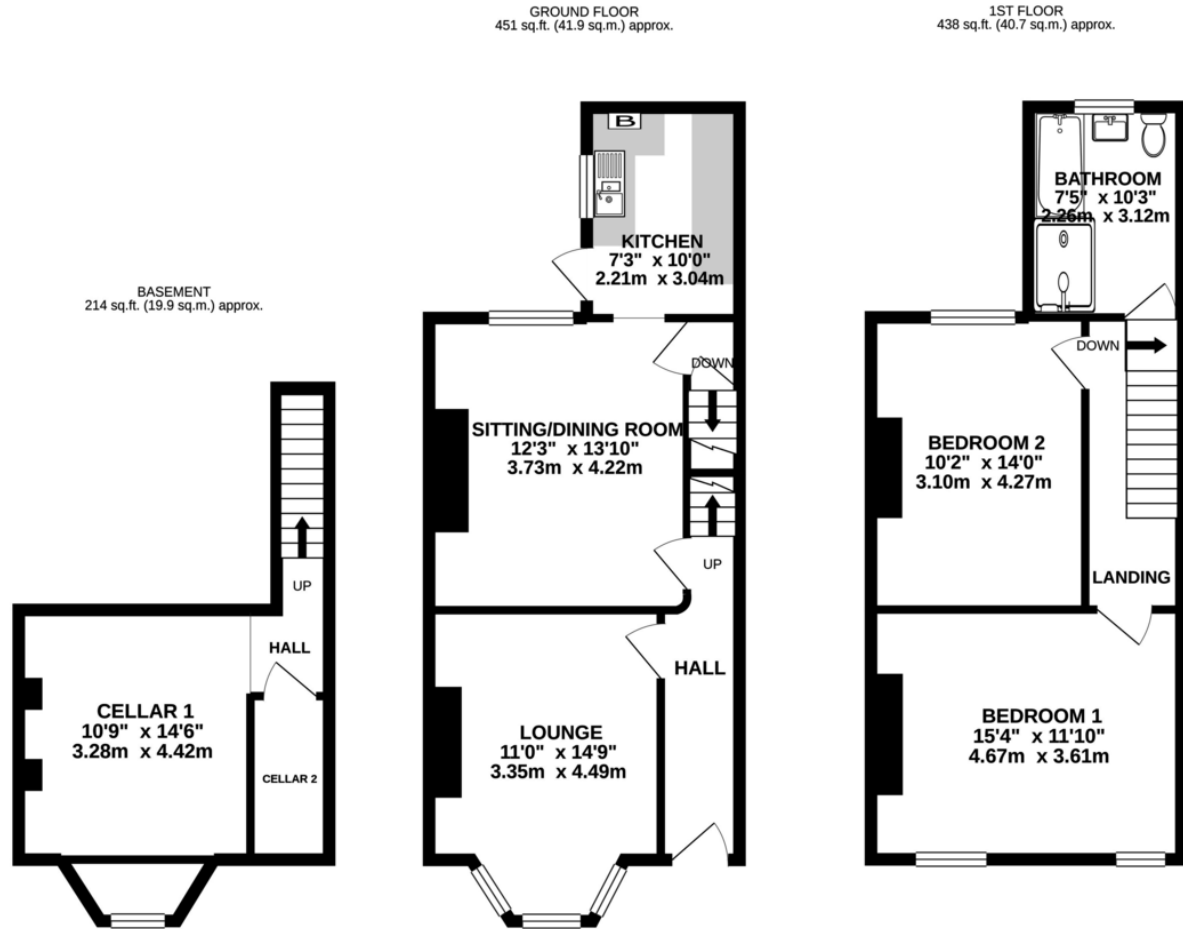
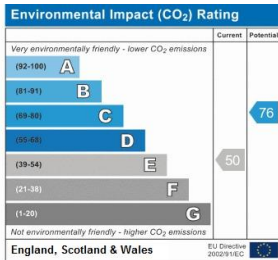
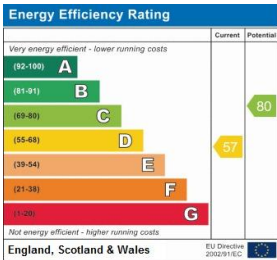
JohnMellor



We are delighted to be able to offer for sale this larger style mid terrace property which boasts super views to the front over Heaton Norris Park together with a delightful lawned rear garden area and additional yard with covered storage and decking. The accommodation retains much of the essential charm and character of its era, sadly lacking in today's more modern constructions, and combines them with most welcome modern additions such as gas central heating and upvc double glazing.



The elegant entrance hall leads to a good sized lounge, there is a separate sitting/dining room, a kitchen and stairs lead down to the useful basement which is currently used for storage. To the first floor there are two excellent double bedrooms and a large bathroom with a four piece white suite. Love Lane is a very pleasant cul de sac which is convenient for local amenities as well as the more comprehensive facilities in Stockport Town centre which are just a 0.6 mile walk away. Stockport train station and Heaton Chapel train station are 0.8 and 1.2 mile walks away. Viewing highly recommended.



JohnMellor

182 Heaton Moor Road, Heaton Moor,
Stockport, Cheshire, SK4 4DU
Tel: 0161 442 4142
sales@john-mellor.co.uk
www.john-mellor.co.uk

IMPORTANT! These particulars and floor plans are set out as a general outline only for the guidance of intending purchasers or lessees and do not constitute part of an offer or contract, nor may they be regarded as representations. All interested parties must themselves verify their accuracy. All measurements are approximate. The agents have not tested any apparatus, equipment, fixtures, fittings or services and so cannot verify that they are in working order, or fit for purpose. The buyer is advised to obtain verification from their solicitor or surveyor. J273