



20 West Meadow, Reddish, Stockport, SK5 6XR

JohnMellor





No chain involved! A most attractive and spacious two bedroom flat situated on the first floor and located on a very pleasant modern estate of varying house styles. The accommodation is in need of some updating but all the ingredients are there for a purchaser to carry out improvements to their own taste and requirements. The flat is self contained, having its own entrance door, which leads to a private hall with stairs up to a landing in turn leading to the lounge which opens into a dining area, a kitchen and then the inner hall (with access to loft storage) leads to the two bedrooms and the bathroom.





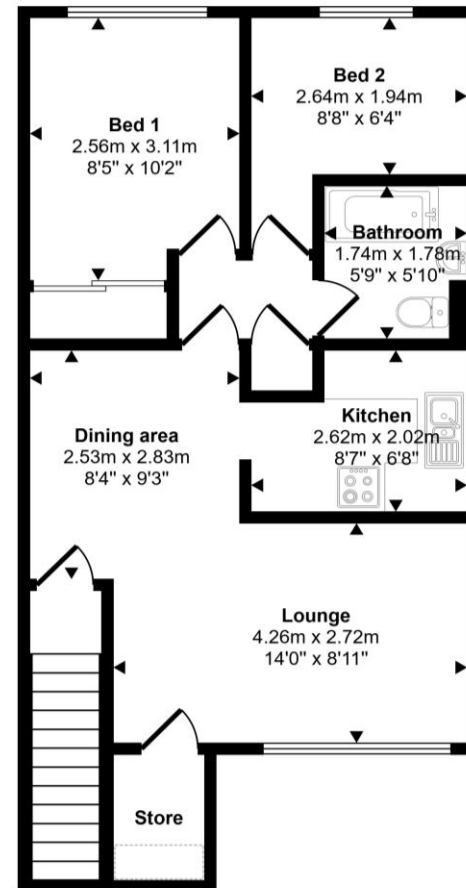
The windows are upvc double glazed and there are wall mounted gas heaters in the lounge and main bedroom. In addition there is a front garden area belonging to the flat as well as a parking space in the parking area to the right of the flat. West Meadow is just a 0.9 mile walk from Reddish North train station which operates into Manchester Piccadilly and Reddish Vale Country Park is also just a few minutes stroll away. The flat is leasehold for the remainder of a 125 year term from 1978 with a ground rent of £10.00 per annum. Council tax band A.





Energy Efficiency Rating		
	Current	Potential
Very energy efficient – lower running costs		
(92 plus) <b>A</b>		
(81-91) <b>B</b>		
(69-80) <b>C</b>		77
(55-68) <b>D</b>	66	
(39-54) <b>E</b>		
(21-38) <b>F</b>		
(1-20) <b>G</b>		
Not energy efficient – higher running costs		
<b>England &amp; Wales</b>	EU Directive 2002/91/EC	

Approx Gross Internal Area  
51 sq m / 547 sq ft



First Floor

Denotes head height below 1.5m

This floorplan is only for illustrative purposes and is not to scale. Measurements of rooms, doors, windows, and any items are approximate and no responsibility is taken for any error, omission or mis-statement. Icons of items such as bathroom suites are representations only and may not look like the real items. Made with Made Snappy 360.

# JohnMellor

182 Heaton Moor Road, Heaton Moor,  
Stockport, Cheshire, SK4 4DU  
Tel: 0161 442 4142  
sales@john-mellor.co.uk  
www.john-mellor.co.uk

IMPORTANT! These particulars and floor plans are set out as a general outline only for the guidance of intending purchasers or lessees and do not constitute part of an offer or contract, nor may they be regarded as representations. All interested parties must themselves verify their accuracy. All measurements are approximate. The agents have not tested any apparatus, equipment, fixtures, fittings or services and so cannot verify that they are in working order, or fit for purpose. The buyer is advised to obtain verification from their solicitor or surveyor. J273