



To arrange a viewing
please call 01908 675747

Stunning property located in the sought-after area of Walton Park in Milton Keynes. This delightful detached house boasts a spacious interior providing ample space for comfortable living.

One of the standout features of this property is its extension, offering additional living space and enhancing the overall charm of the house. The bi-folding doors not only bring in an abundance of natural light but also seamlessly connect the indoor and outdoor areas, perfect for entertaining guests or enjoying a peaceful evening in the garden.

Situated in the Walton High catchment area, this home is ideal for families looking to benefit from excellent educational opportunities. Additionally, being local to Caldecote Lake, residents can enjoy picturesque walks and outdoor activities right on their doorstep.

If you are looking for a property that combines modern living with a touch of elegance, then Pyxe Court is the perfect choice. Don't miss the opportunity to make this beautiful house your new home.

- Off Road Parking
- Utility
- En-suite
- Private Rear garden
- Single garage
- Extended

Entrance

2'10" x 2'8"

Entrance Hall

14'4" x 8'10"

Lounge

17'10" x 11'7"

Kitchen/Diner

21'7" x 16'4"

Utility

7'6" x 4'6"

Cloakroom

6'8" x 4'6"

Study

11'6" x 6'6"

Landing

Bedroom 1

17'4" x 11'7"



To arrange a viewing
please call 01908 675747



Bedroom 2

9'6" x 6'11"

Bedroom 3

10'5" x 8'1"

Bedroom 4

6'10" x 6'6"

En-suite

7'3" x 2'11"

Bathroom

7'2" x 6'9"

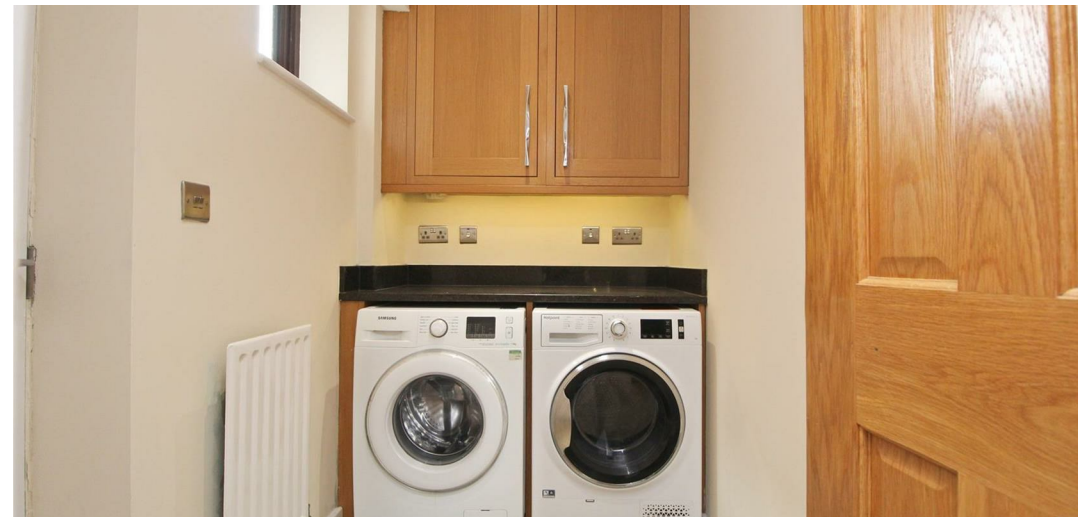
Balcony

Garage

28'2" x 7'4"



To arrange a viewing
please call 01908 675747



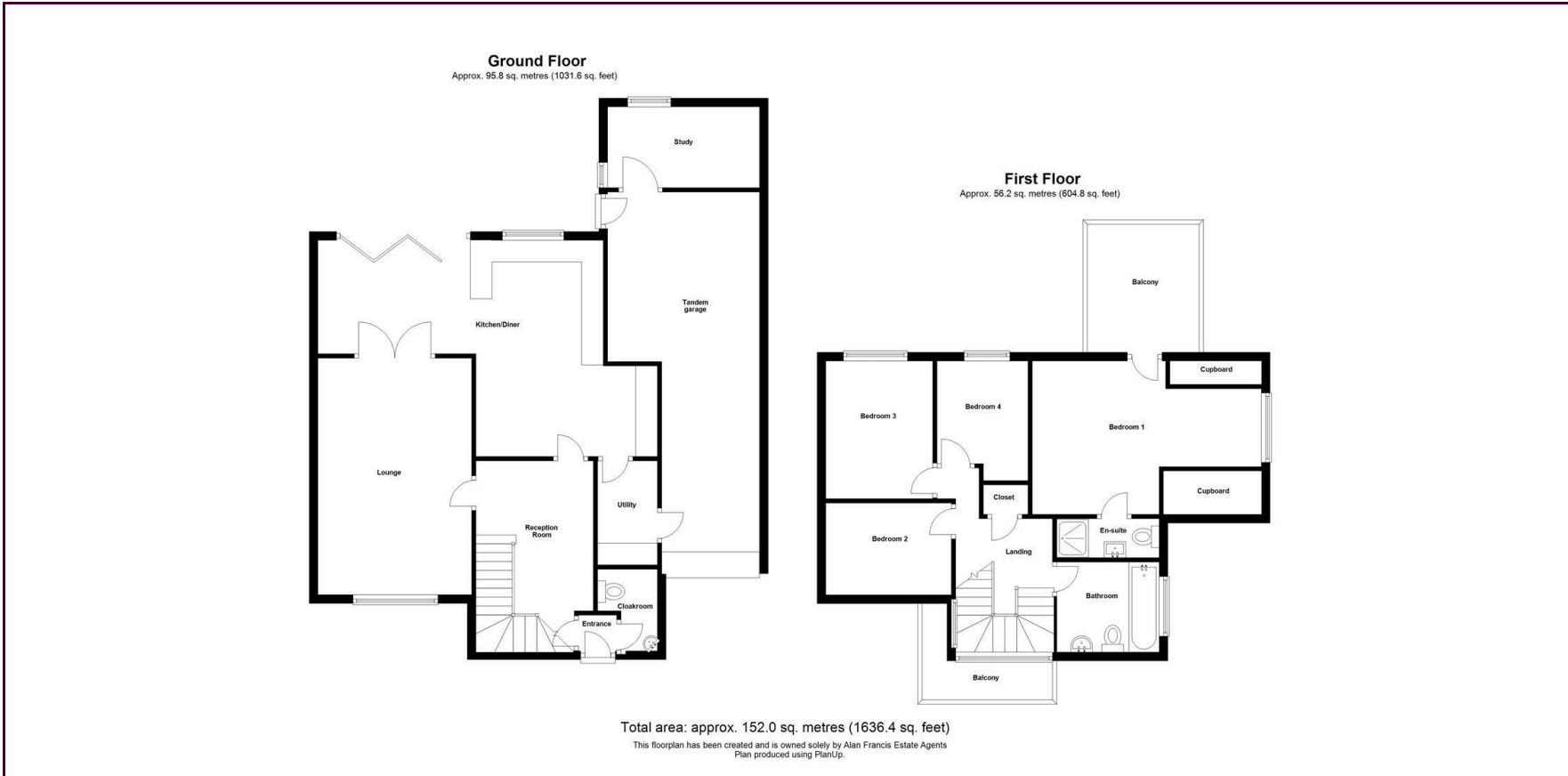
To arrange a viewing
please call 01908 675747



To arrange a viewing
please call 01908 675747



To arrange a viewing
please call 01908 675747



Energy Efficiency Rating		
	Current	Potential
Very energy efficient - lower running costs		
(92 plus) A		
(81-91) B		
(69-80) C		
(55-68) D		
(39-54) E		
(21-38) F		
(1-20) G		
Not energy efficient - higher running costs		
England & Wales	EU Directive 2002/91/EC	

Draft Details

These details have been submitted to our clients but at the moment have not been approved by them. We therefore, cannot guarantee their accuracy and they are distributed on this basis. Please ensure you have a copy of our approved details before committing yourself to any expense.

Whilst we endeavour to make our sales details accurate and reliable, if there is any point which is of particular importance to you, please contact the office and we shall be pleased to check any information for you. Do so, especially if travelling any distance to view the property.

The mention of any appliances and/or services within these details does not imply they are in full and efficient working order.

Any plans included within these details are a GUIDE TO THE LAYOUT OF THE PROPERTY ONLY and are NOT DRAWN TO SCALE. Dimensions are approximate.

Mortgage Information

We can offer independent mortgage advice. Please call us to discuss your requirements. Your home may be repossessed if you do not keep up repayment on your mortgage or any loans secured on it.

Property Valuations

We have some of the most experienced property valuers in Milton Keynes and would welcome the opportunity to carry out a VALUATION and MARKET APPRAISAL of your home.

Viewing Arrangements

Please call us to make an appointment to view this property.

Monday to Friday 9.00 am - 6.00 pm
Saturday 9.00 am - 4.00 pm
Sunday CLOSED

