



To arrange a viewing  
please call 01908 675747

Welcome to this charming end terrace house located on Gotland Avenue in the sought-after area of Whitehouse, Milton Keynes.

Upon entering, you are greeted by two inviting reception rooms, perfect for entertaining guests or relaxing with your family. The property boasts three bedrooms, offering ample space for a growing family or those in need of a home office.

One of the highlights of this property is the modern kitchen diner, providing a spacious and stylish area to cook and enjoy meals with loved ones. The master bedroom comes complete with an en suite bathroom, offering convenience and privacy.

Step outside to discover a private rear garden, ideal for hosting summer barbecues or simply unwinding after a long day. With driveway parking for two vehicles and a single garage, parking will never be an issue for you or your guests.

Don't miss the opportunity to make this house your home and enjoy the comfort and convenience it has to offer. Contact us today to arrange a viewing and start envisioning your future in this wonderful property on Gotland Avenue.

- Spacious Kitchen/Diner
- En Suite to Master Bedroom
- Downstairs Study
- Downstairs Cloakroom
- Single Garage and Driveway Parking
- Ideal Family Home

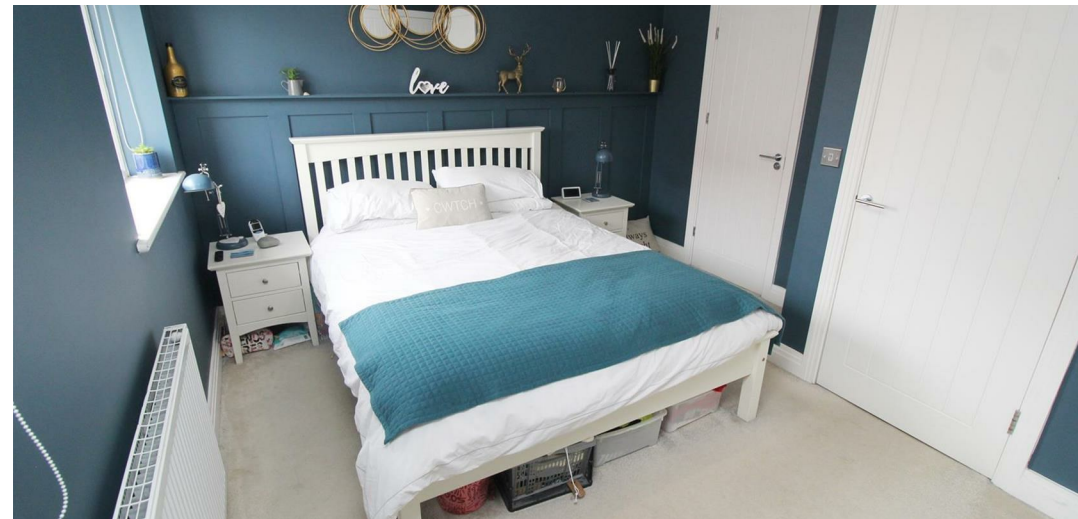
Location: Whitehouse



To arrange a viewing  
please call 01908 675747



To arrange a viewing  
please call 01908 675747

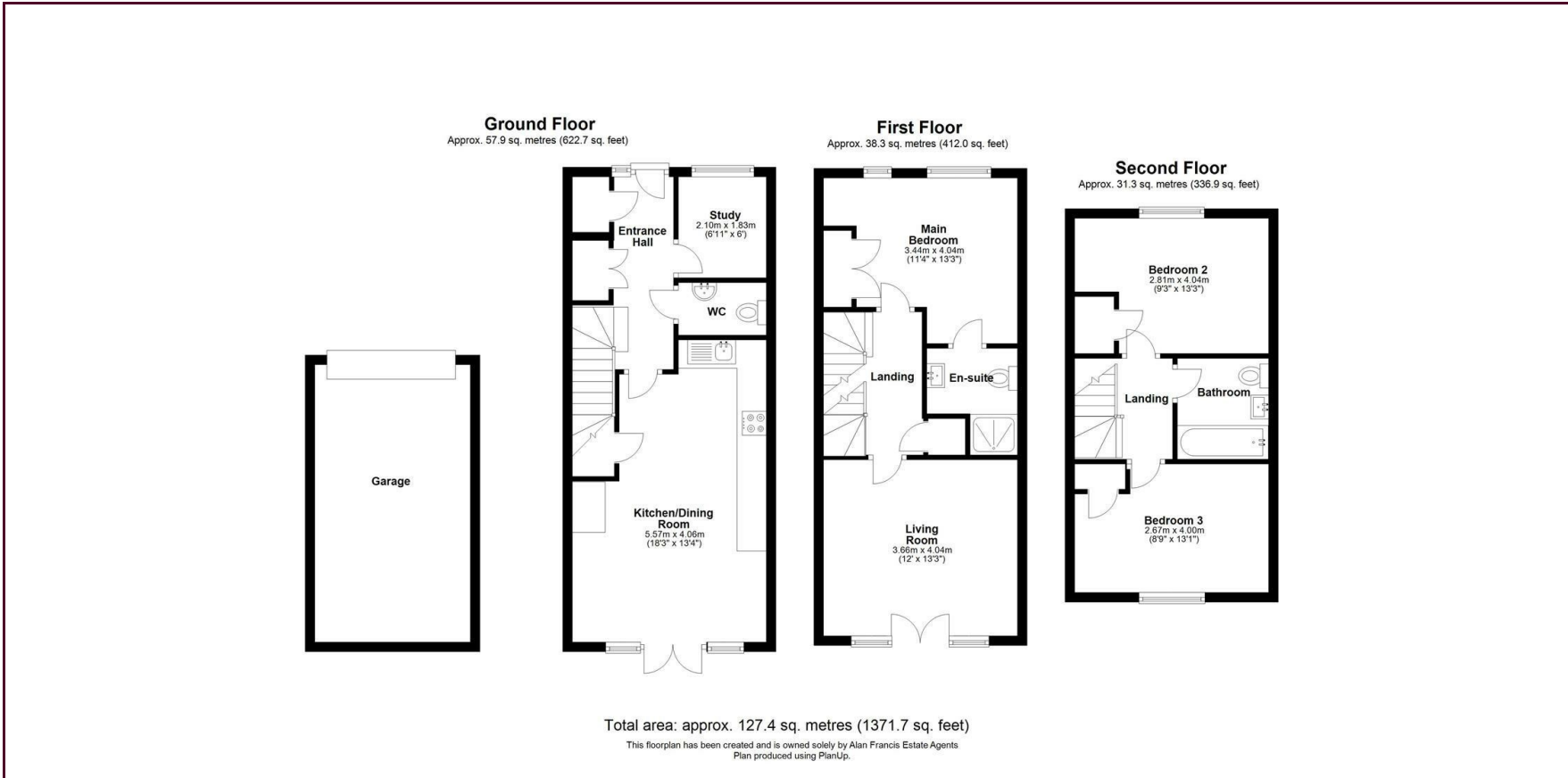




To arrange a viewing  
please call 01908 675747



To arrange a viewing  
please call 01908 675747



Energy Efficiency Rating		
	Current	Potential
Very energy efficient - lower running costs		
(92 plus) <b>A</b>		<b>94</b>
(81-91) <b>B</b>	<b>84</b>	
(69-80) <b>C</b>		
(55-68) <b>D</b>		
(39-54) <b>E</b>		
(21-38) <b>F</b>		
(1-20) <b>G</b>		
Not energy efficient - higher running costs		
<b>England &amp; Wales</b>		EU Directive 2002/91/EC

### Draft Details

These details have been submitted to our clients but at the moment have not been approved by them. We therefore, cannot guarantee their accuracy and they are distributed on this basis. Please ensure you have a copy of our approved details before committing yourself to any expense.

Whilst we endeavour to make our sales details accurate and reliable, if there is any point which is of particular importance to you, please contact the office and we shall be pleased to check any information for you. Do so, especially if travelling any distance to view the property.

The mention of any appliances and/or services within these details does not imply they are in full and efficient working order.

Any plans included within these details are a GUIDE TO THE LAYOUT OF THE PROPERTY ONLY and are NOT DRAWN TO SCALE. Dimensions are approximate.

### Mortgage Information

We can offer independent mortgage advice. Please call us to discuss your requirements. Your home may be repossessed if you do not keep up repayment on your mortgage or any loans secured on it.

### Property Valuations

We have some of the most experienced property valuers in Milton Keynes and would welcome the opportunity to carry out a VALUATION and MARKET APPRAISAL of your home.

### Viewing Arrangements

Please call us to make an appointment to view this property.

Monday to Friday 9.00 am - 6.00 pm  
Saturday 9.00 am - 4.00 pm  
Sunday CLOSED

