



To arrange a viewing
please call 01908 675747

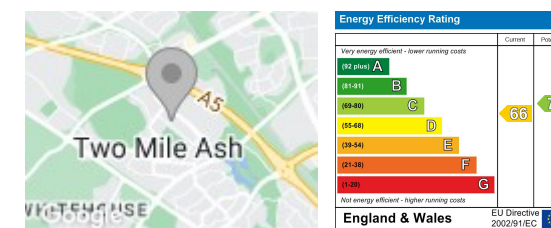
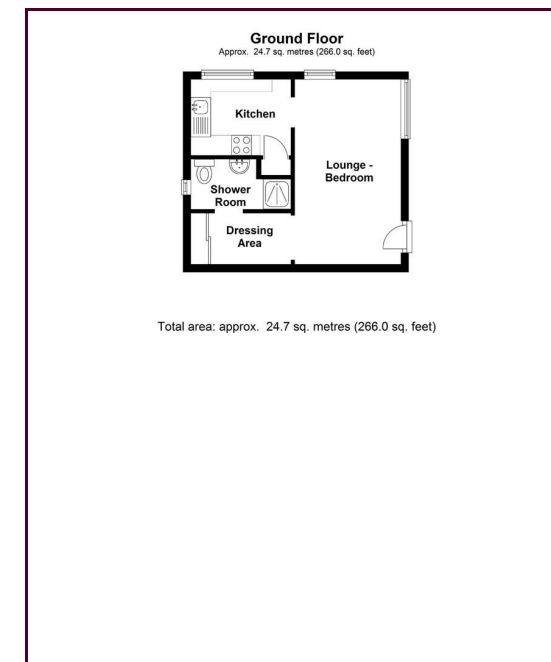
STUDIO APARTMENT within a CLOSE PROXIMITY TO MK TRAIN STATION, separate dressing area and a MODERN SHOWER ROOM...

In further detail, this ground floor studio apartment briefly comprises of an entrance hall with built-in storage, separate kitchen, lounge/bedroom with wood flooring, separate dressing area & a shower room. Outside benefits a private rear garden and an allocated parking space.

The property is offered unfurnished and available mid of June. EPC Rating: TBC

6 month minimum tenancy
Council Tax Band A
Deposit is equivalent to 5 weeks rent

- Studio Apartment
- Wooding Flooring Throughout
- Dressing Area
- Shower Room
- Good Sized Kitchen
- Offered Unfurnished



Draft Details

These details have been submitted to our clients but at the moment have not been approved by them. We therefore, cannot guarantee their accuracy and they are distributed on this basis. Please ensure you have a copy of our approved details before committing yourself to any expense.

Whilst we endeavour to make our sales details accurate and reliable, if there is any point which is of particular importance to you, please contact the office and we shall be pleased to check any information for you. Do so, especially if travelling any distance to view the property.

The mention of any appliances and/or services within these details does not imply they are in full and efficient working order.

Any plans included within these details are a GUIDE TO THE LAYOUT OF THE PROPERTY ONLY and are NOT DRAWN TO SCALE. Dimensions are approximate.

Mortgage Information

We can offer independent mortgage advice. Please call us to discuss your requirements. Your home may be repossessed if you do not keep up repayment on your mortgage or any loans secured on it.

Property Valuations

We have some of the most experienced property valuers in Milton Keynes and would welcome the opportunity to carry out a VALUATION and MARKET APPRAISAL of your home.

Viewing Arrangements

Please call us to make an appointment to view this property.

Monday to Friday 9.00 am - 6.00 pm
Saturday 9.00 am - 4.00 pm
Sunday CLOSED

