



To arrange a viewing  
please call 01908 675747



Welcome to Oxhouse Court, a stunning property located in the desirable area of Shenley Brook End in Milton Keynes. This detached house boasts 2 reception rooms, ideal for entertaining guests or simply relaxing with the family. With 4 spacious bedrooms and 2 bathrooms, there is plenty of room for everyone to enjoy their own space.

One of the standout features of this property is the parking space for 4 vehicles, making it convenient for those with multiple cars or visitors. Additionally, the double garage provides even more parking or can be used for extra storage space.

Step outside into the private rear garden, a tranquil oasis where you can unwind after a long day or host summer barbecues with friends and family. The perfect school catchment area adds to the appeal of this property, making it an ideal home for families with children.

Don't miss out on the opportunity to make this beautiful house your new home. Contact us today to arrange a viewing and experience the charm of Oxhouse Court for yourself.

- Double Garage
- Perfect Location & Within a Great School catchment
- Private Rear Garden
- Study
- En Suite to Main Bedroom
- Utility

LOCATION: SHENLEY BROOK END

ENTRANCE HALL

SITTING ROOM  
13'11" x 10'4"

DINING ROOM  
10'4" x 9'10"

KITCHEN  
14'10" x 9'10"

UTILITY  
6'5" x 5'0"

STUDY  
10'10" x 8'2"

FIRST FLOOR LANDING

BEDROOM ONE

EN SUITE



To arrange a viewing  
please call 01908 675747



BEDROOM TWO

11'11" x 8'10"

BEDROOM THREE

10'11" x 8'1"

BEDROOM FOUR

8'10" x 8'0"

BATHROOM

REAR GARDEN

DOUBLE GARAGE &  
DRIVEWAY

TENURE

Freehold



To arrange a viewing  
please call 01908 675747





To arrange a viewing  
please call 01908 675747

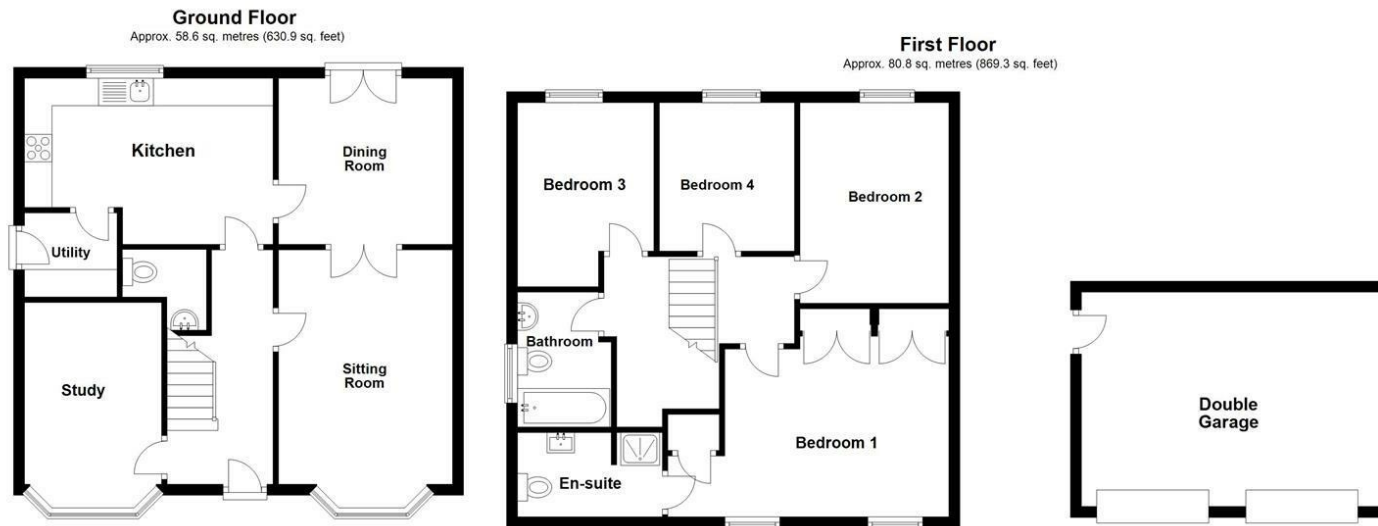






To arrange a viewing  
please call 01908 675747

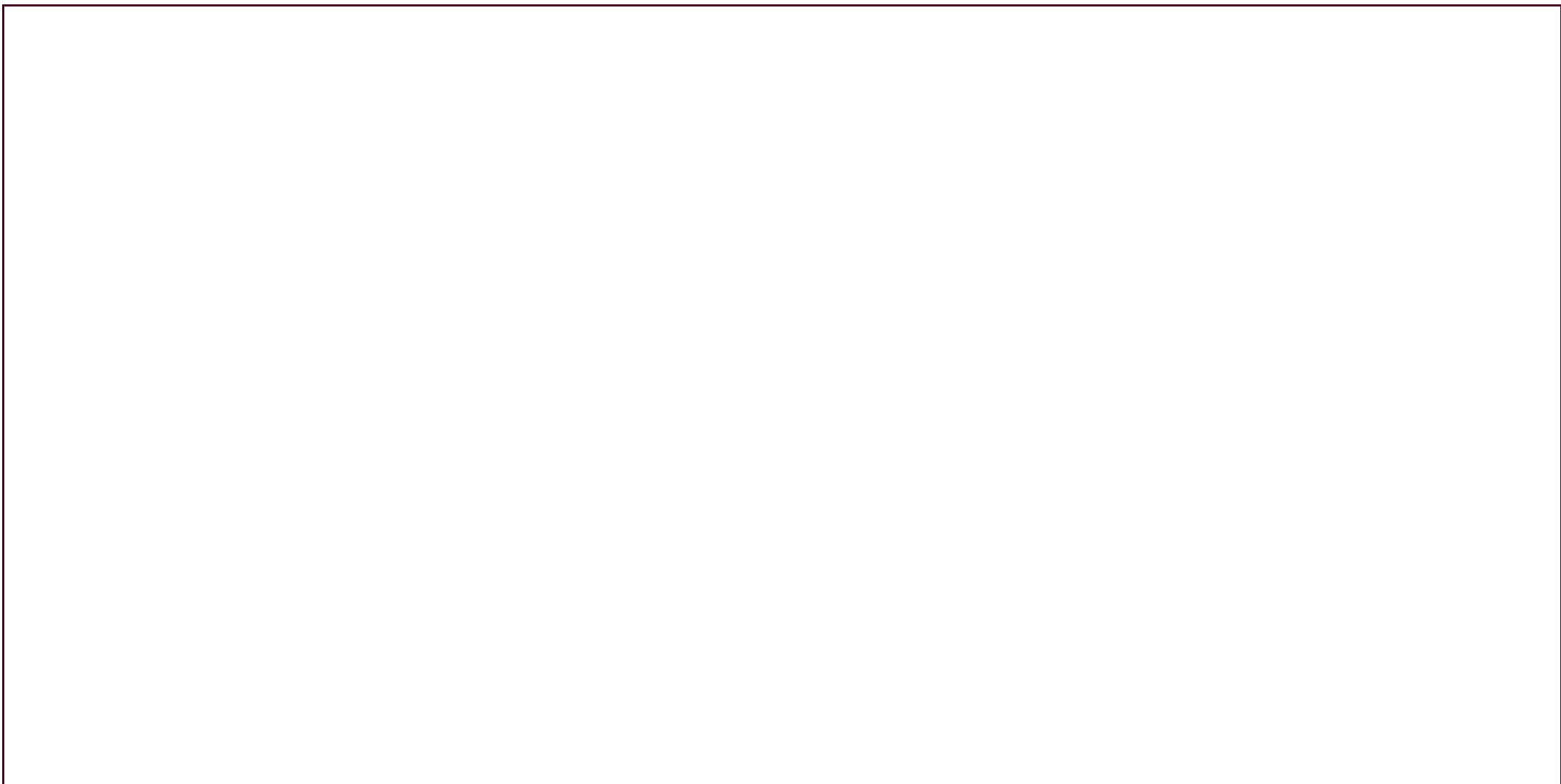




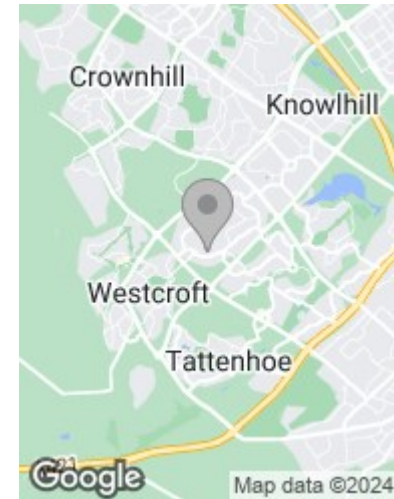
Total area: approx. 139.4 sq. metres (1500.2 sq. feet)


This floorplan has been created and is owned solely by Alan Francis Estate Agents.  
Plan produced using PlanUp.

To arrange a viewing  
please call 01908 675747







Energy Efficiency Rating		
	Current	Potential
<i>Very energy efficient - lower running costs</i>		
(92 plus) <b>A</b>		
(81-91) <b>B</b>		
(69-80) <b>C</b>		
(55-68) <b>D</b>		
(39-54) <b>E</b>		
(21-38) <b>F</b>		
(1-20) <b>G</b>		
<i>Not energy efficient - higher running costs</i>		
<b>England &amp; Wales</b>		EU Directive 2002/91/EC 

### Draft Details

These details have been submitted to our clients but at the moment have not been approved by them. We therefore, cannot guarantee their accuracy and they are distributed on this basis. Please ensure you have a copy of our approved details before committing yourself to any expense.

Whilst we endeavour to make our sales details accurate and reliable, if there is any point which is of particular importance to you, please contact the office and we shall be pleased to check any information for you. Do so, especially if travelling any distance to view the property.

The mention of any appliances and/or services within these details does not imply they are in full and efficient working order.

Any plans included within these details are a GUIDE TO THE LAYOUT OF THE PROPERTY ONLY and are NOT DRAWN TO SCALE. Dimensions are approximate.

### Mortgage Information

We can offer independent mortgage advice. Please call us to discuss your requirements. Your home may be repossessed if you do not keep up repayment on your mortgage or any loans secured on it.

### Property Valuations

We have some of the most experienced property valuers in Milton Keynes and would welcome the opportunity to carry out a VALUATION and MARKET APPRAISAL of your home.

### Viewing Arrangements

Please call us to make an appointment to view this property.

Monday to Friday 9.00 am - 6.00 pm  
Saturday 9.00 am - 4.00 pm  
Sunday CLOSED

