



To arrange a viewing
please call 01908 675747

WELL PRESENTED spacious three bedroom home with a CONSERVATORY, KITCHEN/DINER, MODERN BATHROOM & a private rear garden.

In further detail, this well positioned three bedroom home is tucked away at the end of a cul-de-sac and is well presented throughout. Briefly comprising: a porch entrance, spacious lounge, kitchen/diner, conservatory, two double bedrooms, single bedroom & a refitted bathroom. Outside is a single garage for storage, off street parking & a landscaped rear garden.

Offered unfurnished & available late June. EPC Rating: TBC

Minimum Contract Length: 6 Months
Council Tax Band: D
Deposit equivalent to 5 weeks rent

- Three Bedrooms
- Conservatory
- Spacious Lounge
- Modern Bathroom
- Landscaped Rear Garden
- Single Garage

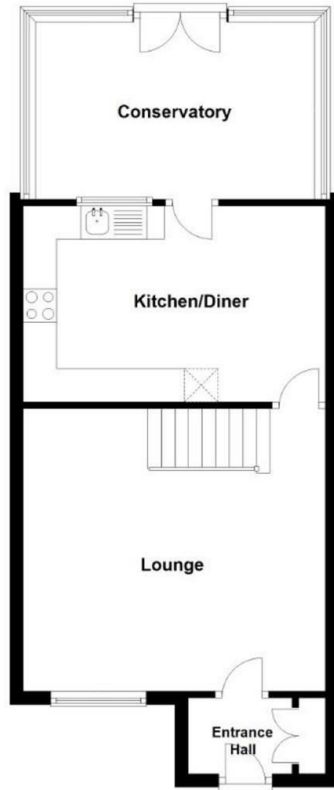
LOCATION: FURZTON

Furzton is a residential area boasting Furzton Lake, which has walk and cycle-ways around it. The area is situated in south-west Milton Keynes and has a linear park running through it, playing fields, a number of children's parks, allotments and a local shopping centre. The area is well served by local buses.

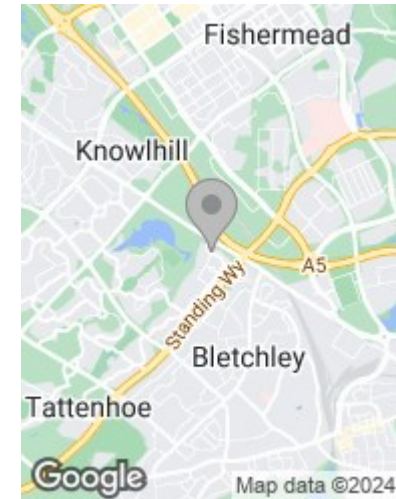
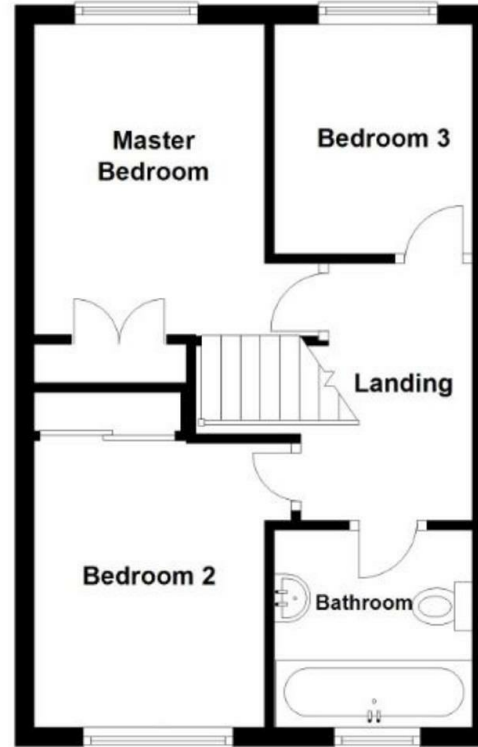


To arrange a viewing
please call 01908 675747





Total area: approx. 80.4 sq. metres (865.6 sq. feet)



Energy Efficiency Rating		Current	Potential
Very energy efficient - lower running costs			
(92 plus) A			89
(81-91) B			
(69-80) C		68	
(55-68) D			
(39-54) E			
(21-38) F			
(1-20) G			
Not energy efficient - higher running costs			
England & Wales		EU Directive 2002/91/EC	

Draft Details

These details have been submitted to our clients but at the moment have not been approved by them. We therefore, cannot guarantee their accuracy and they are distributed on this basis. Please ensure you have a copy of our approved details before committing yourself to any expense.

Whilst we endeavour to make our sales details accurate and reliable, if there is any point which is of particular importance to you, please contact the office and we shall be pleased to check any information for you. Do so, especially if travelling any distance to view the property.

The mention of any appliances and/or services within these details does not imply they are in full and efficient working order.

Any plans included within these details are a GUIDE TO THE LAYOUT OF THE PROPERTY ONLY and are NOT DRAWN TO SCALE. Dimensions are approximate.

Mortgage Information

We can offer independent mortgage advice. Please call us to discuss your requirements. Your home may be repossessed if you do not keep up repayment on your mortgage or any loans secured on it.

Property Valuations

We have some of the most experienced property valuers in Milton Keynes and would welcome the opportunity to carry out a VALUATION and MARKET APPRAISAL of your home.

Viewing Arrangements

Please call us to make an appointment to view this property.

Monday to Friday 9.00 am - 6.00 pm
Saturday 9.00 am - 4.00 pm
Sunday CLOSED

