



To arrange a viewing
please call 01908 675747

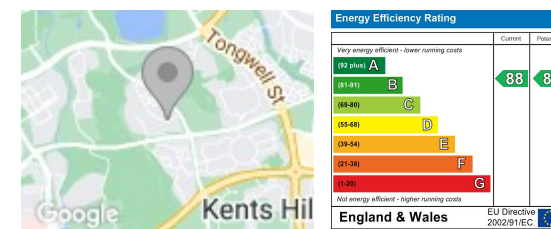
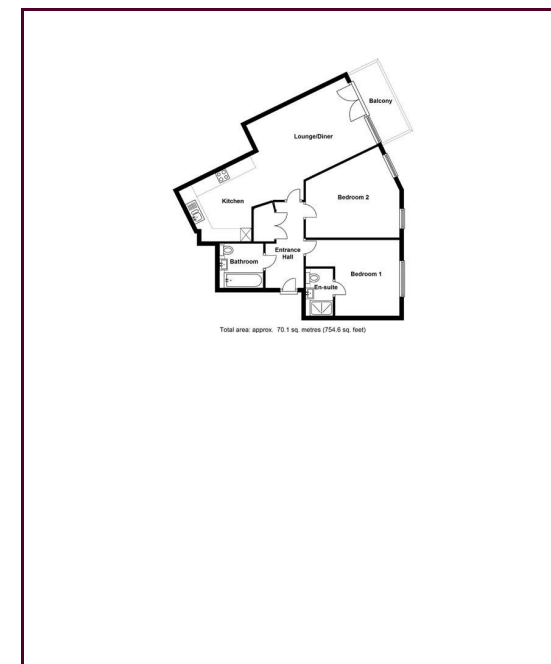
A STUNNING TWO BEDROOM FIRST FLOOR APARTMENT, SPACIOUS OPEN PLAN LIVING ROOM/KITCHEN and a EN-SUITE TO MASTER...

A stunning 1st floor apartment with solid wood flooring throughout, comprising of entrance hall, master bedroom with ensuite, a further double bedroom, bathroom with shower, open plan lounge/dining room with beautiful kitchen & balcony. Outside is secure/gated parking & security entrance. Close to local amenities including Costa Coffee.

This lovely property is offered part furnished & available early May. EPC rating: C

Minimum Contract Length: 6 Months
Deposit equivalent to 5 weeks rent
Council Tax Band: B

- Two Double Bedrooms
- First Floor
- Two Bathrooms
- Lounge/Diner
- Balcony
- Secure Parking



Draft Details

These details have been submitted to our clients but at the moment have not been approved by them. We therefore, cannot guarantee their accuracy and they are distributed on this basis. Please ensure you have a copy of our approved details before committing yourself to any expense.

Whilst we endeavour to make our sales details accurate and reliable, if there is any point which is of particular importance to you, please contact the office and we shall be pleased to check any information for you. Do so, especially if travelling any distance to view the property.

The mention of any appliances and/or services within these details does not imply they are in full and efficient working order.

Any plans included within these details are a GUIDE TO THE LAYOUT OF THE PROPERTY ONLY and are NOT DRAWN TO SCALE. Dimensions are approximate.

Mortgage Information

We can offer independent mortgage advice. Please call us to discuss your requirements. Your home may be repossessed if you do not keep up repayment on your mortgage or any loans secured on it.

Property Valuations

We have some of the most experienced property valuers in Milton Keynes and would welcome the opportunity to carry out a VALUATION and MARKET APPRAISAL of your home.

Viewing Arrangements

Please call us to make an appointment to view this property.

Monday to Friday 9.00 am - 6.00 pm
Saturday 9.00 am - 4.00 pm
Sunday CLOSED

