



To arrange a viewing
please call 01908 675747

This lovely apartment in the HIGHLY SOUGHT-AFTER LOCATION of Grange Park boasts TWO DOUBLE BEDROOMS WITH AN EN-SUITE TO MASTER BEDROOM, LARGE LIVING SPACES with PLENTY OF STORAGE, and ALLOCATED PARKING to the rear. All located in an AMAZING LOCATION just a SHORT WALK FROM FOXFIELD COUNTRY PARK....

This two bedroom first floor apartment comprises of an entrance hall, open plan lounge/diner, separate kitchen, master bedroom with en-suite shower room, Bedroom two and a family bathroom. Outside the property is allocated parking and a secure intercom system in order to gain entrance.

Offered furnished with white goods & available end of March. EPC Rating: C

Minimum Contract Length: 6 Months
Council Tax Band: C
Deposit equivalent to 5 weeks rent

- FIRST FLOOR
- EN-SUITE TO MASTER
- ALLOCATED PARKING SPACE
- TWO DOUBLE BEDROOMS
- SECURE INTERCOM SYSTEM
- OPEN PLAN LOUNGE/DINER

LOCATION: GRANGE PARK, NORTHAMPTON

Grange Park is ideally located and further benefits from easy access to the M1 motorway, good local amenities and located close to Woodland View Primary School with Foxfield Country Park just a short walk away.

FIRST FLOOR

Entrance Hall

Kitchen
10'5" x 8'2"

Lounge/Diner
15'9" x 12'9"

Master Bedroom
11'8" x 10'10"

En-Suite

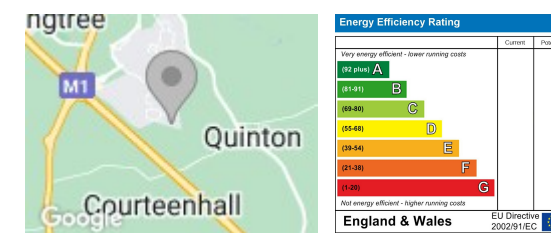
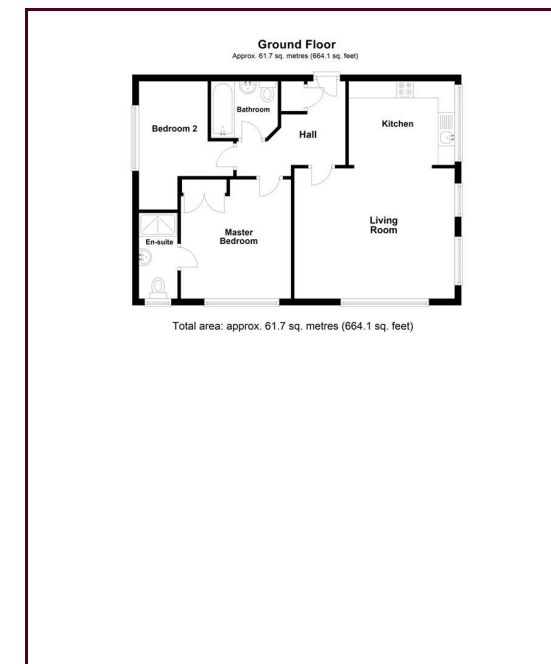
Second Bedroom
9'3" x 6'9"

Family Bathroom

OUTSIDE

Allocated Parking

TENURE
Leasehold



Draft Details

These details have been submitted to our clients but at the moment have not been approved by them. We therefore, cannot guarantee their accuracy and they are distributed on this basis. Please ensure you have a copy of our approved details before committing yourself to any expense.

Whilst we endeavour to make our sales details accurate and reliable, if there is any point which is of particular importance to you, please contact the office and we shall be pleased to check any information for you. Do so, especially if travelling any distance to view the property.

The mention of any appliances and/or services within these details does not imply they are in full and efficient working order.

Any plans included within these details are a GUIDE TO THE LAYOUT OF THE PROPERTY ONLY and are NOT DRAWN TO SCALE. Dimensions are approximate.

Mortgage Information

We can offer independent mortgage advice. Please call us to discuss your requirements. Your home may be repossessed if you do not keep up repayment on your mortgage or any loans secured on it.

Property Valuations

We have some of the most experienced property valuers in Milton Keynes and would welcome the opportunity to carry out a VALUATION and MARKET APPRAISAL of your home.

Viewing Arrangements

Please call us to make an appointment to view this property.

Monday to Friday 9.00 am - 6.00 pm
Saturday 9.00 am - 4.00 pm
Sunday CLOSED

