



To arrange a viewing
please call 01908 675747

*** HUGE DEVELOPMENT POTENTIAL STPP *** Set upon a LARGE PLOT, this CHARMING VILLAGE FAMILY HOME benefits from a SUBSTANTIAL and ENCLOSED PRIVATE REAR GARDEN/ORCHARD, DOWNSTAIRS CLOAKROOM, DOUBLE GARAGE and OFF ROAD DRIVEWAY PARKING for up to FOUR VEHICLES.

- Substantial Plot
- Ideal Project Home with Potential to Extend/Renovate
- Large Private Rear Garden
- Downstairs Study
- Double Garage and Driveway Parking
- Quiet Village Location
- 15 Minutes Drive into Central Milton Keynes

LOCATION: MURSLEY

Mursley is a small village and also a civil parish in Buckinghamshire, England. It is located about three miles east of Winslow and about seven miles south west of Central Milton Keynes. The village name is Old English in origin, and is thought to mean 'Myrsa's woodland clearing'. In the Domesday Book of 1086 the village was recorded as Muselai, with the form Murselai being attested from the thirteenth century. The village was at one time a more important place; it was once a market town, by virtue of a royal charter granted in 1230, and the centre of the local deanery. Actor David Tomlinson, who played George Banks in Mary Poppins and Mr. Emelius Browne in Bedknobs and Broomsticks, lived and raised his children in Mursley until his death on 24 June 2000.



To arrange a viewing
please call 01908 675747



PROPERTY MEASUREMENTS (APPROX.)

Ground Floor:

Living Room 6.01m (19'9") x 3.57m (11'9")

Dining Room 3.57m (11'9") x 2.35m (7'8")

Kitchen 4.50m (14'9") x 2.37m (7'9")

Pantry 1.27m (4'2") x 1.19m (3'11")

Lean-to

Entrance Hall

Cloakroom

Study 3.82m (12'6") x 3.16m (10'4")

First Floor:

Bedroom 2 3.71m (12'2") max x 3.50m (11'6") plus 0.02m (0'1") x 0.02m (0'1")

Master Bedroom 4.65m (15'3") x 3.50m (11'6")

Bedroom 3 2.92m (9'7") x 2.44m (8')

Bathroom

Landing

FRONT GARDEN

PRIVATE REAR GARDEN

DOUBLE GARAGE

DRIVEWAY PARKING

TENURE

Freehold

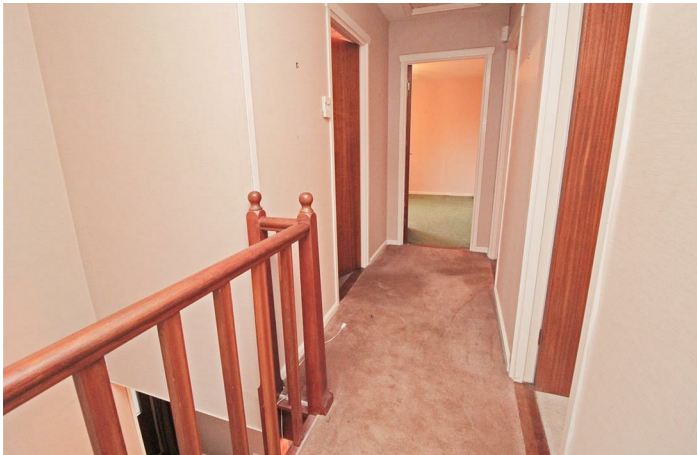
NOTICE

Please note that we have not tested any internal fixtures or carried out any structural surveys. We advise all buyers to check all aspects of the property and although the details above have been described to the best of our abilities we would advise any buyer to carry out their own checks and to check with their independent legal representative to confirm any of the above details.

To arrange a viewing
please call 01908 675747



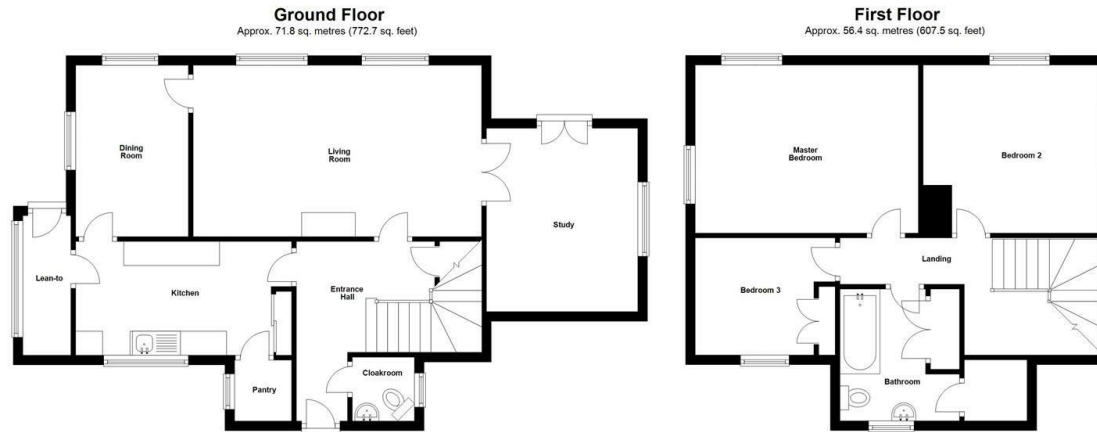
To arrange a viewing
please call 01908 675747



To arrange a viewing
please call 01908 675747



To arrange a viewing
please call 01908 675747



Total area: approx. 128.2 sq. metres (1380.2 sq. feet)



Energy Efficiency Rating		Current	Potential
Very energy efficient - lower running costs			
(92 plus) A			
(81-91) B			
(69-80) C			69
(55-68) D			
(39-54) E			
(21-38) F			
(1-20) G		11	
Not energy efficient - higher running costs			
England & Wales		EU Directive 2002/91/EC	

Draft Details

These details have been submitted to our clients but at the moment have not been approved by them. We therefore, cannot guarantee their accuracy and they are distributed on this basis. Please ensure you have a copy of our approved details before committing yourself to any expense.

Whilst we endeavour to make our sales details accurate and reliable, if there is any point which is of particular importance to you, please contact the office and we shall be pleased to check any information for you. Do so, especially if travelling any distance to view the property.

The mention of any appliances and/or services within these details does not imply they are in full and efficient working order.

Any plans included within these details are a GUIDE TO THE LAYOUT OF THE PROPERTY ONLY and are NOT DRAWN TO SCALE. Dimensions are approximate.

Mortgage Information

We can offer independent mortgage advice. Please call us to discuss your requirements. Your home may be repossessed if you do not keep up repayment on your mortgage or any loans secured on it.

Property Valuations

We have some of the most experienced property valuers in Milton Keynes and would welcome the opportunity to carry out a VALUATION and MARKET APPRAISAL of your home.

Viewing Arrangements

Please call us to make an appointment to view this property.

Monday to Friday 9.00 am - 6.00 pm
Saturday 9.00 am - 4.00 pm
Sunday CLOSED

