



To arrange a viewing  
please call 01908 675747

FOUR BEDROOM SEMI DETACHED HOME with a SPACIOUS KITCHEN DINER, downstairs cloakroom & FAMILY BATHROOM...

In further details this beautiful family home is located in the popular area of Stantonbury. This property comprises of entrance hall, downstairs cloakroom, kitchen/diner and lounge. To the upstairs boasts four spacious bedrooms and a family bathroom. This property also includes a garage conversion with power outlets and lights. Other benefits include to the outside the property has a front garden and a lovely private rear garden, with driveway parking for two vehicles.

This property can be offered unfurnished and is available in late April EPC Rating: C

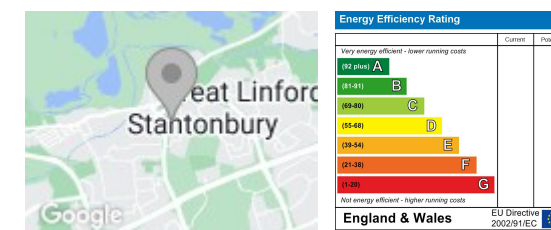
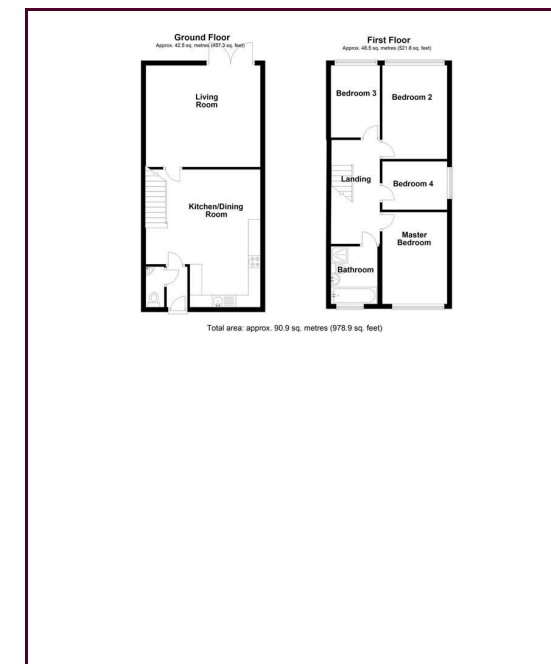
Council Tax Band: B  
Minimum Contract Length: 6 Months  
Deposit equivalent to 5 weeks rent

- Modern Kitchen
- Garage Conversion
- Front/Rear Garden
- Spacious Kitchen/Diner

- Driveway Parking
- Offered Unfurnished

#### LOCATION: STANTONBURY

Stantonbury is situated to the North of Milton Keynes. Schools within/close to the area include Wood End First School, Stanton School, New Bradwell School and Stantonbury Campus. The Campus includes two comprehensive schools, a resource centre, a theatre, a leisure centre, outdoor sports facilities and an athletics track, youth club and hostel, church, health centre and shopping centre. The location right at the northern edge of the city gives easy access to parkland, lakes, The Railway Walk and the canal.



#### Draft Details

These details have been submitted to our clients but at the moment have not been approved by them. We therefore, cannot guarantee their accuracy and they are distributed on this basis. Please ensure you have a copy of our approved details before committing yourself to any expense.

Whilst we endeavour to make our sales details accurate and reliable, if there is any point which is of particular importance to you, please contact the office and we shall be pleased to check any information for you. Do so, especially if travelling any distance to view the property.

The mention of any appliances and/or services within these details does not imply they are in full and efficient working order.

Any plans included within these details are a GUIDE TO THE LAYOUT OF THE PROPERTY ONLY and are NOT DRAWN TO SCALE. Dimensions are approximate.

#### Mortgage Information

We can offer independent mortgage advice. Please call us to discuss your requirements. Your home may be repossessed if you do not keep up repayment on your mortgage or any loans secured on it.

#### Property Valuations

We have some of the most experienced property valuers in Milton Keynes and would welcome the opportunity to carry out a VALUATION and MARKET APPRAISAL of your home.

#### Viewing Arrangements

Please call us to make an appointment to view this property.

Monday to Friday 9.00 am - 6.00 pm  
Saturday 9.00 am - 4.00 pm  
Sunday CLOSED

