



To arrange a viewing  
please call 01908 675747



\*\*\*\*\*THIS IS £1200 WITH ALL BILLS INCLUDED\*\*\*\*\*  
 ONE BEDROOM ANNEXE with a spacious living room, MODERN FOUR PIECE BATHROOM, OUTSIDE AREA and driveway parking...

In further details this one bedroom annexe all bills included at £1200pcm, briefly comprises of an entrance hall with storage, a kitchen with appliances, spacious living room, modern four piece bathroom and a good sized double bedroom.

Other benefits include All bills included at £1200pcm, driveway parking and access to an outdoor area.

This property is offered furnished and available now. EPC Rating: D

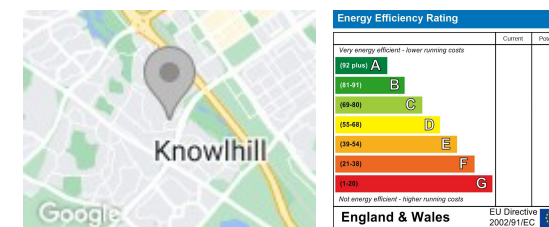
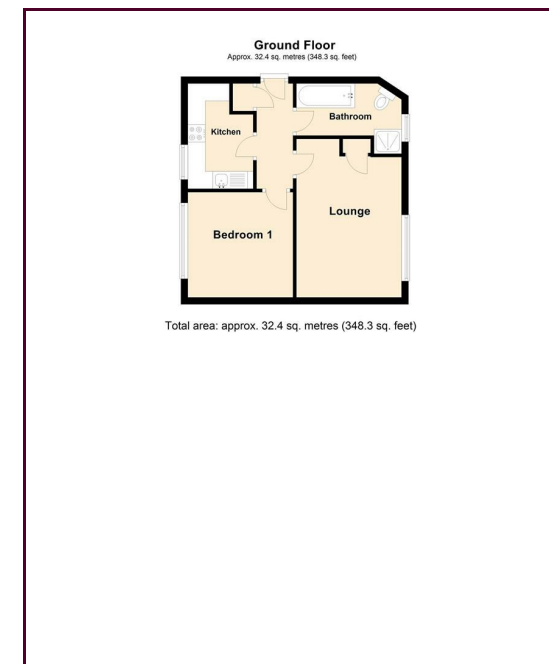
Minimum Contract Length: 6 months  
 Deposit equivalent to 5 weeks rent

- Bills Included at £1200pcm
- Access To Outside Area
- Driveway Parking
- Walking Distance To CMK Train Station

- Modern Four Piece Bathroom
- Available Now

### LOCATION: LOUGHTON

Loughton is situated to the west of the city centre, within close proximity of Milton Keynes Central Railway Station. There are three schools in Loughton: Loughton Manor First School, Loughton Middle School and The Grove, an independent junior and nursery school. There is also a private day nursery. Older children are served by Denbigh School in neighbouring Shenley Church End. There are two pubs: The Talbot (an old coaching inn) and The Harvester - both with restaurants. There is also a Sports and Social Club with a sports ground, allotments in the NW corner of the grid square and an Equestrian Centre.



### Draft Details

These details have been submitted to our clients but at the moment have not been approved by them. We therefore, cannot guarantee their accuracy and they are distributed on this basis. Please ensure you have a copy of our approved details before committing yourself to any expense.

Whilst we endeavour to make our sales details accurate and reliable, if there is any point which is of particular importance to you, please contact the office and we shall be pleased to check any information for you. Do so, especially if travelling any distance to view the property.

The mention of any appliances and/or services within these details does not imply they are in full and efficient working order.

Any plans included within these details are a GUIDE TO THE LAYOUT OF THE PROPERTY ONLY and are NOT DRAWN TO SCALE. Dimensions are approximate.

### Mortgage Information

We can offer independent mortgage advice. Please call us to discuss your requirements. Your home may be repossessed if you do not keep up repayment on your mortgage or any loans secured on it.

### Property Valuations

We have some of the most experienced property valuers in Milton Keynes and would welcome the opportunity to carry out a VALUATION and MARKET APPRAISAL of your home.

### Viewing Arrangements

Please call us to make an appointment to view this property.

Monday to Friday 9.00 am - 6.00 pm  
 Saturday 9.00 am - 4.00 pm  
 Sunday CLOSED

