



To arrange a viewing
please call 01908 675747

MODERN first floor maisonette WITH A GARAGE in a QUIET LOCATION close to WOLVERTON TRAIN STATION, boasting LOUNGE/DINER, SPACIOUS master bedroom with FITTED WARDROBES...

In further detail, this two bedroom first floor maisonette briefly comprises of entrance hall, large lounge/diner with access into a modern kitchen with appliances, a large master bedroom with fitted wardrobes, a further bedroom and a family bathroom. Other benefits include gas central heating, communal garden, single garage and allocated parking.

Offered part furnished and available early August. EPC Rating: C

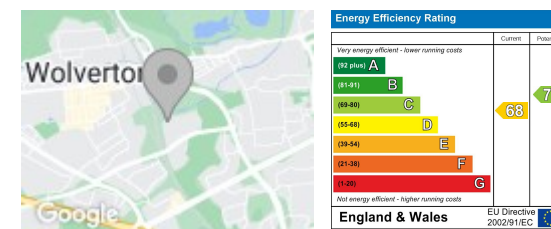
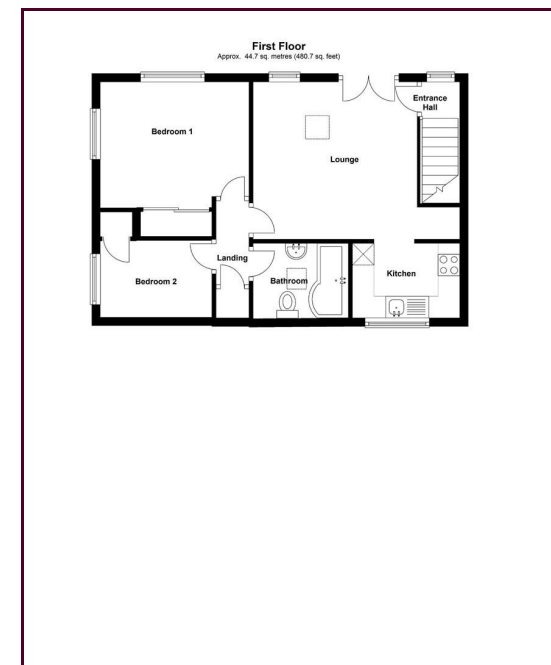
Minimum Contract Length: 6 Months
Deposit equivalent to 5 weeks rent
Council Tax Band: B

- Two Bedroom
- First Floor Maisonette
- Single Garage
- Large Lounge
- Well Presented

- Offered Part Furnished

LOCATION: BLUE BRIDGE

Blue Bridge is situated to the North of Milton Keynes. There is a centrally situated meeting place which contains squash courts, sauna, multi-purpose hall, bar and shop. The area is adjacent to the A5 trunk road and Central Milton Keynes is just a few minutes away. The nearest shopping is at Wolverton which has a high street, the Agora Centre and a Tesco's supermarket. Education is at a number of schools. Bradwell Village Middle School. New Bradwell Combined and Priory Common First School. Stantonbury Campus provides secondary education and has a sixth form.



Draft Details

These details have been submitted to our clients but at the moment have not been approved by them. We therefore, cannot guarantee their accuracy and they are distributed on this basis. Please ensure you have a copy of our approved details before committing yourself to any expense.

Whilst we endeavour to make our sales details accurate and reliable, if there is any point which is of particular importance to you, please contact the office and we shall be pleased to check any information for you. Do so, especially if travelling any distance to view the property.

The mention of any appliances and/or services within these details does not imply they are in full and efficient working order.

Any plans included within these details are a GUIDE TO THE LAYOUT OF THE PROPERTY ONLY and are NOT DRAWN TO SCALE. Dimensions are approximate.

Mortgage Information

We can offer independent mortgage advice. Please call us to discuss your requirements. Your home may be repossessed if you do not keep up repayment on your mortgage or any loans secured on it.

Property Valuations

We have some of the most experienced property valuers in Milton Keynes and would welcome the opportunity to carry out a VALUATION and MARKET APPRAISAL of your home.

Viewing Arrangements

Please call us to make an appointment to view this property.

Monday to Friday 9.00 am - 6.00 pm
Saturday 9.00 am - 4.00 pm
Sunday CLOSED

