



1 The Ropewalk, Southwell, NG25 0AL

£695,000

Tel: 01636 816200

**RICHARD
WATKINSON
PARTNERS**

Surveyors, Estate Agents, Valuers, Auctioneers

- An Attractive Period Home
- Significantly Refurbished
- 2 Large Reception Rooms
- 4 Bedrooms
- Attractive Gardens, Driveway & Garage
- Beautifully Appointed Throughout
- Stunning Living/Dining Kitchen
- Useful Boot/Utility. GF W/C
- Superb Bathroom & En Suite
- Highly Convenient Central Location

A rare and exciting opportunity to purchase this handsome detached period home. beautifully appointed throughout and significantly upgraded by the current owners to now provide a high calibre home in a highly convenient setting.

The accommodation boasts a perfect blend of traditional charm and modern elegance including a stunning living style dining kitchen, fitted with a comprehensive range of quality units including a large island unit and providing plenty of space for dining, relaxing, and entertaining.

There are 2 spacious reception rooms including a sitting room, extending to over 23 feet and housing a feature log-burner. The useful boot/utility room and a spacious W/C offer practical convenience whilst to the 1st floor are 4 bedrooms, the 4-piece family bathroom and an ensuite shower room, all superbly appointed throughout.

The delightful, partially walled garden includes a lovely entrance courtyard seating area leading to the main garden which includes a level lawn and well stocked borders, attractive 'tumbled' block paved seating and pathway leading to the rear of the garden where the useful brick built garage and driveway parking are found.

ACCOMMODATION

An original panelled entrance door with feature brass furniture leads into the entrance hall.

ENTRANCE HALL

With a uPVC double glazed obscured window to the side aspect, solid oak flooring, a white three column traditional style radiator, stairs rising to the first floor and doors to rooms including a door into the sitting room.

SITTING ROOM

A large reception room spanning the whole width of the property with dentilled plate rack, two uPVC double glazed sliding sash windows to the front aspect, two traditional style white 3 column radiators, a feature fireplace with inset Burley log burner and exposed brick hearth with shelving and storage cupboards to the alcoves.

DINING ROOM

A well proportioned reception room with original plate rack, oak flooring, a vertical column radiator in white, a door and staircase leading down the cellars, wall lights, a uPVC double glazed window to the courtyard and a feature fireplace housing an Aga electric stove.

INNER HALLWAY

With oak flooring, a uPVC double glazed window to the courtyard and being open plan into the living style dining kitchen.

LIVING STYLE DINING KITCHEN

A fantastic space to the rear of the property with a vaulted ceiling incorporating high level conservation skylights flooding the area with light. There are uPVC double glazed French doors to the courtyard plus a bespoke double glazed window overlooking the rear garden. Oak flooring throughout, spotlights to the ceiling, two vertical column radiators in white, and feature wall panelling.

The kitchen is superbly fitted with a quality range of in-frame base and wall cabinets by Magnut topped with Minerva worktops in white and including an undermounted double bowl Butlers sink with mixer tap, tiling for splashbacks with brass trim and a feature Butler pantry larder with shelving, storage and wine rack plus racks. There is a comprehensive range of appliances including a Zanussi eye level double oven, integrated dishwasher by AEG, a Zanussi four zone induction power hob with feature brass finished extractor hood over. Integrated fridge/freezer and plenty of storage plus a large island unit with wine cooler and breakfast bar seating for two.

UTILITY/BOOT ROOM

A useful room towards the rear of the property with double glazed window units and a part glazed door leading onto the rear garden. There is oak flooring, a traditional style white column radiator and vaulted ceiling with spotlights. Fitted with a range of quality inframe base and wall cabinets with quality Minvera worktops and an inset ceramic sink with mixer tap. Space beneath the worktop for appliances including plumbing for a washing machine. Tiled splashbacks, an extractor fan and a wall mounted Ideal central heating boiler.

GROUND FLOOR CLOAKROOM

A large cloakroom with plenty of space for coat and boot storage. With oak flooring, panelling to the walls, a uPVC double glazed obscured window to the rear aspect, spotlights to the ceiling and fitted with a traditional cloakroom suite by Burlington including a wall mounted wash basin with hot and cold taps and a close coupled toilet.

CELLAR

Extensive basement cellarge offering useful storage space.

FIRST FLOOR LANDING

With high level skylights, spotlights to the ceiling, access hatch to the roof space and a traditional white column radiator.

BEDROOM ONE

A good sized double bedroom with feature panelling, a traditional style white column radiator and a uPVC double glazed sliding sash window to the front aspect.

BEDROOM TWO

A double bedroom with a central heating radiator, a uPVC double glazed window to the side aspect and a door into the en-suite shower room.

EN-SUITE SHOWER ROOM

Fitted with a three piece suite including a quadrant style shower cubicle with glazed sliding doors and mains fed shower. There is a dual flush toilet and a wall mounted wash basin with mixer tap and tiled splashback. Tiled flooring, contemporary style towel radiator, spotlights and extractor fan.

BEDROOM THREE

A double bedroom with traditional style central heating radiator in white plus a uPVC double glazed sliding sash window to the front aspect.

BEDROOM FOUR

With a traditional style column radiator and a uPVC double glazed window to the rear aspect.

FAMILY BATHROOM

Superbly fitted with a traditional style Burlington suite including a low level toilet and a vanity wash stand with hot and cold taps. There is a shower enclosure with glazed folding door and mains fed rainfall shower plus a freestanding slipper style bath with freestanding mixer tap. Tiled flooring, tiling to the walls for splashbacks, spotlights to the ceiling, a traditional style towel radiator and a uPVC double glazed obscured window.

GARDENS

The property offers a delightful, partially walled garden including a lovely entrance courtyard seating area leading to the main garden area which includes a level lawn and well stocked borders, attractive block paved seating patio and pathway leading to the rear of the garden where a handgate opens onto the driveway parking.

DRIVEWAY AND GARAGE

Block paved driveway parking leads to the useful detached garage of brick and slate construction with a door leading to the rear garden.

COUNCIL TAX

The property is registered as council tax band E.

VIEWINGS

By appointment with Richard Watkinson & Partners.









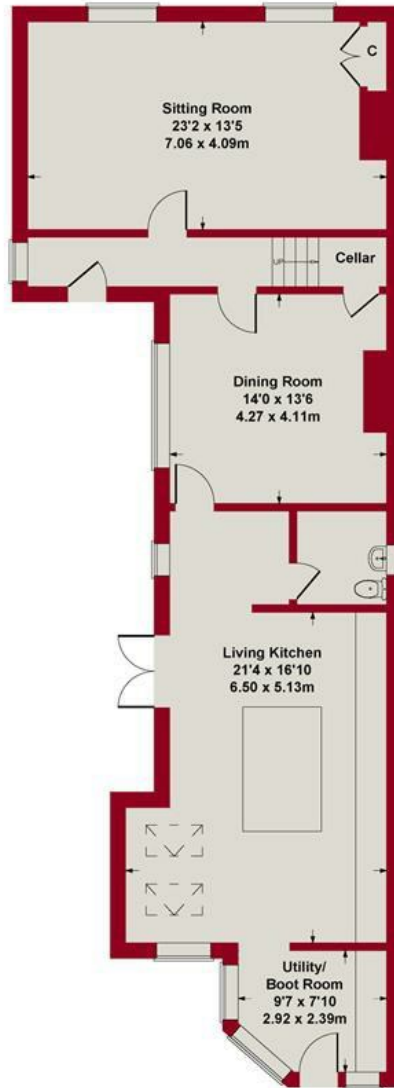




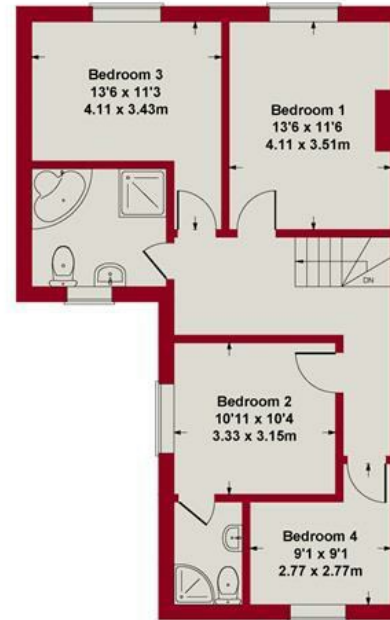




Approximate Gross Internal Area
1771 sq ft - 165 sq m



GROUND FLOOR

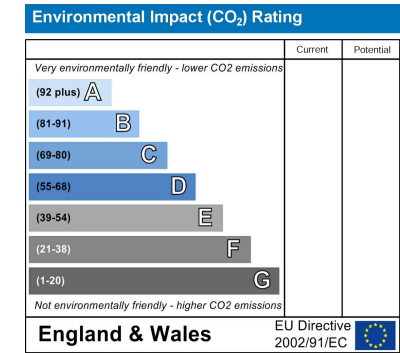
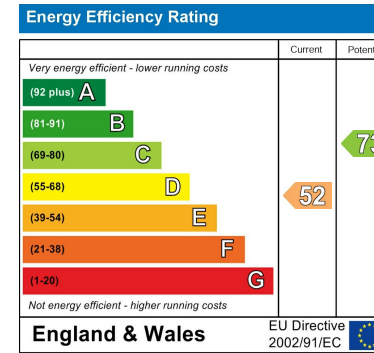


FIRST FLOOR

Whilst every attempt has been made to ensure the accuracy of the floor plan contained here, measurements of doors, windows, rooms and any other items are approximate and no responsibility is taken for any error, omission, or mis-statement. This plan is for illustrative purposes only and should be used as such by any prospective purchaser or tenant. The services, systems and appliances shown have not been tested and no guarantee as to their operability or efficiency can be given.

Copyright V360 Ltd 2024 | www.houseviz.com





These particulars, whilst believed to be accurate are set out as a general outline only for guidance and do not constitute any part of an offer or contract. Intending purchasers should not rely on them as statements of representation of fact, but must satisfy themselves by inspection or otherwise as to their accuracy. No person in this firm's employment has the authority to make or give any representation or warranty in respect of the property. Any fixtures and fittings not mentioned in these details are excluded from the sale price. No services or appliances which may have been included in these details have been tested by the selling agent and therefore cannot be guaranteed to be in good working order.

As part of the service we offer we may recommend ancillary services to you such as mortgage advice, solicitors and surveyors which we believe will help with your property transaction. We wish to make you aware that should you decide to proceed we may receive a referral fee or equivalent. This could be a fee, commission, payment or other reward. We will not refer your details unless you have provided consent for us to do so. You are not under any obligation to provide us with your consent or to use any of these services. You are also free to choose an alternative provider.

Thinking of selling? For a FREE no obligation quotation call 01636 816200



Richard Watkinson & Partners is the trading name of Richard Watkinson Ltd.
Registered in England. Ltd Registration number: 07140024

20 King Street,
Southwell NG25 0EH
Tel: 01636 816200
Email: southwell@richardwatkinson.co.uk



Surveyors, Estate Agents, Valuers, Auctioneers