



14 Station Road, Southwell, Nottinghamshire,
NG25 0ET

Guide Price £459,950

Tel: 01636 816200

 **RICHARD
WATKINSON
PARTNERS**

Surveyors, Estate Agents, Valuers, Auctioneers

- A Beautiful Period Home
- Many Character Features
- Well-Proportioned Dining Room
- 4 Double Bedrooms
- A Good-Sized Rear Garden
- Central Location
- Lounge With Fireplace
- Kitchen With Pantry/Utility
- 4-Piece Bathroom
- Viewing Highly Recommended

An exciting opportunity to purchase this superbly appointed period home, offering an excellent level of accommodation over 3 floors and occupying a highly convenient location, only a short stroll through the Burgage to a wide selection of shops and facilities.

The property is a fine example of a well-maintained Victorian home, with spacious accommodation approaching 1600 square feet and brimming with character features such as cast-iron fireplaces and ornate coving and the accommodation in brief comprises: A welcoming entrance hall, a lovely bay-fronted lounge with beautiful fireplace, a large dining room and a fitted kitchen with useful pantry/utility off. There are 4 double bedrooms across the 1st and 2 floors as well as the 4-piece family bathroom with feature roll top bath whilst outside is useful covered storage to the side leading to the generous and enclosed rear garden with patio, lawns and useful garden outbuildings. Viewing is highly recommended!

ACCOMMODATION

An original timber panelled entrance door leads into the entrance hall.

ENTRANCE HALL

With an initial tiled entrance floor in a terracotta chequered design, continuing to a carpeted area and stairs rising to the first floor. There is original ornate cornicing to the ceiling, an arch with decorative corbels, dado rail, a central heating radiator and doors into the dining room and the lounge.

LOUNGE

A lovely bay fronted reception room at the front of the property with original cornicing and picture rail, stripped wooden floorboards, a central heating radiator, a uPVC double glazed bay window to the front aspect, a bespoke floor to ceiling built-in bookcase and a fantastic period fireplace with decorative granite surround, tiled hearth and slips housing a period cast iron open fire.

DINING ROOM

A spacious and versatile reception room with a central heating radiator, coving and picture rail, a uPVC double glazed window overlooking the rear garden and a feature fireplace with antique pine surround, decorative tiled hearth and tiled slips housing a cast iron decorative fireplace. There is a useful storage cupboard under the stairs with coat hooks and lights plus a door into the kitchen.

KITCHEN

Fitted with a range of cream fronted Shaker style base and wall cabinets with contrasting

worktops and tiled splashbacks. There is an inset ceramic one and a half bowl single drainer sink with mixer tap plus a built-in oven with four ring gas hob and extractor hood over. There is space and plumbing for a dishwasher and an under-counter refrigerator plus tiled effect laminate flooring, a central heating radiator, a part glazed door and a single glazed window to the side aspect, spotlights and coving to the ceiling and a door into the walk-in pantry/utility. A useful space with shelving and space for appliances including plumbing for a washing machine.

FIRST FLOOR LANDING

A spacious first floor landing with a coved ceiling and dado rail, a staircase rising to the second floor, central heating radiator and doors to bedrooms and the bathroom.

BEDROOM TWO

A good sized double bedroom with coved ceiling, a central heating radiator, a uPVC double glazed window to the rear aspect, a useful built-in wardrobe and a decorative and painted cast iron fireplace.

BEDROOM THREE

A double bedroom with a central heating radiator, coved ceiling, a uPVC double glazed window to the front aspect and a decorative painted cast iron period fireplace.

BEDROOM FOUR

A good sized fourth bedroom with a central heating radiator, coved ceiling, a uPVC double glazed window to the front aspect, a useful built-in wardrobe and a period cast iron painted fireplace.

FAMILY BATHROOM

A spacious four piece family bathroom fitted with a traditional style suite including a close coupled toilet and a pedestal wash basin with hot and cold taps and decorative tiled splashbacks. There is a feature freestanding double ended claw foot bath with a central mixer shower plus a separate quadrant style shower enclosure with glazed sliding doors and mains fed shower. Coved ceiling, a uPVC double glazed obscured window to the rear aspect, a white and chrome traditional style towel radiator and a built-in storage cupboard with shelving.

BEDROOM ONE

A generous double bedroom located on the top floor of the property with two Velux skylights and a dormer window to the rear aspect. There is fitted wardrobes, shelving and hanging rails, spotlights to the ceiling, a painted period decorative fireplace and access to the eaves for storage.

GARDENS

There is a small walled frontage to the property with a pathway and steps leading to the front door. There is gated access at the side leading via a useful and covered passageway along the side of the property providing handy garden storage and opening into the rear garden which is a particular feature of the property, being enclosed with timber panelled fencing and

mature planting, mainly set to lawn and including a good sized paved patio and a range of brick built garden outbuildings including storage and a garden w/c.

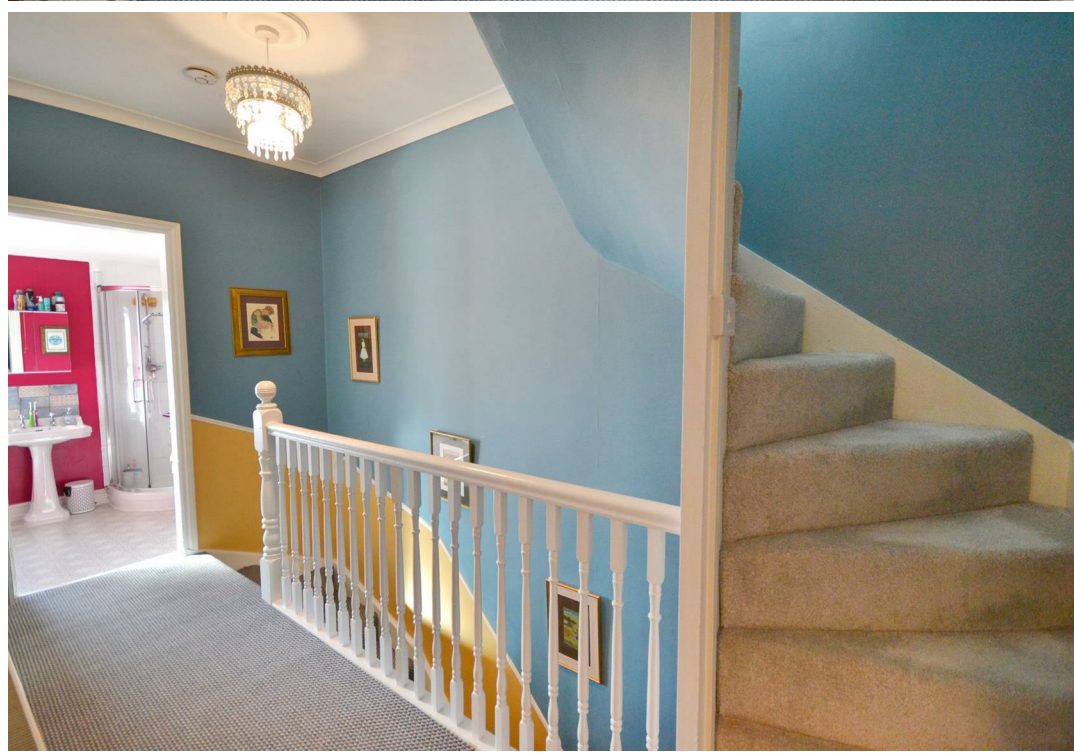
COUNCIL TAX

The property is registered as council tax band D.

VIEWINGS

By appointment with Richard Watkinson & Partners.

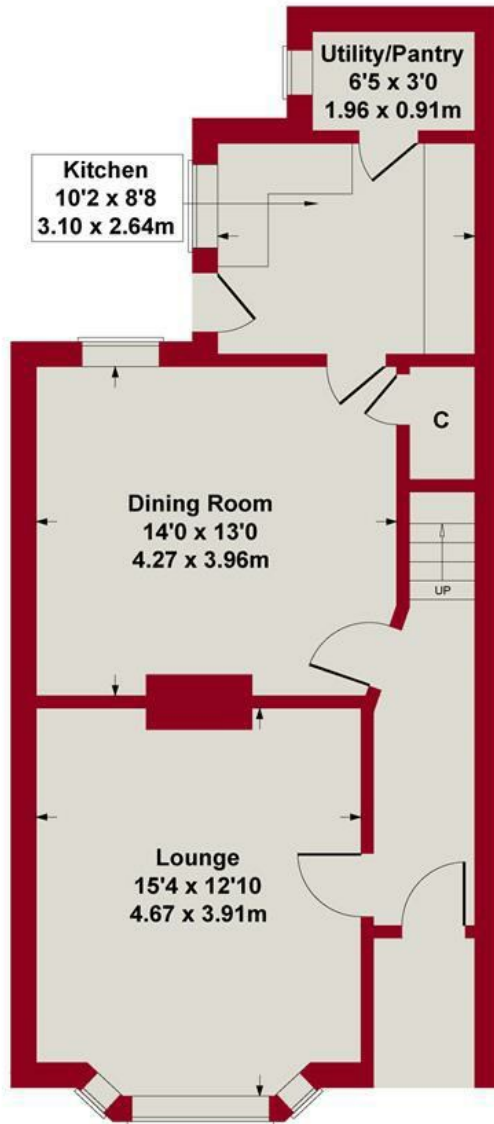








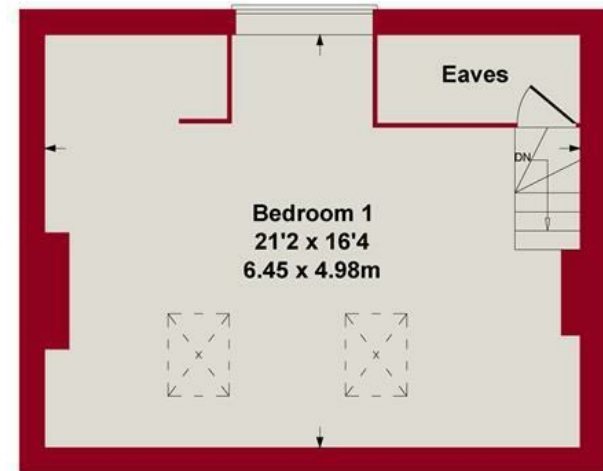
Approximate Gross Internal Area
1578 sq ft - 147 sq m



GROUND FLOOR



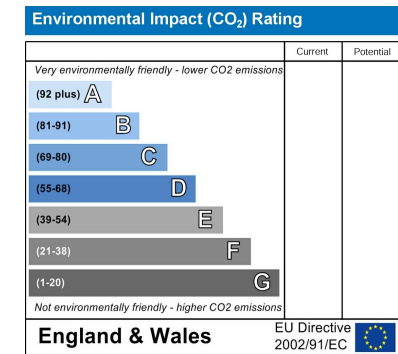
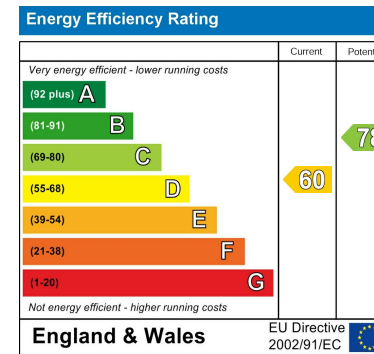
FIRST FLOOR



SECOND FLOOR

Whilst every attempt has been made to ensure the accuracy of the floor plan contained here, measurements of doors, windows, rooms and any other items are approximate and no responsibility is taken for any error, omission, or mis-statement. This plan is for illustrative purposes only and should be used as such by any prospective purchaser or tenant. The services, systems and appliances shown have not been tested and no guarantee as to their operability or efficiency can be given.

Copyright V360 Ltd 2024 | www.houseviz.com



These particulars, whilst believed to be accurate are set out as a general outline only for guidance and do not constitute any part of an offer or contract. Intending purchasers should not rely on them as statements of representation of fact, but must satisfy themselves by inspection or otherwise as to their accuracy. No person in this firm's employment has the authority to make or give any representation or warranty in respect of the property. Any fixtures and fittings not mentioned in these details are excluded from the sale price. No services or appliances which may have been included in these details have been tested by the selling agent and therefore cannot be guaranteed to be in good working order.

As part of the service we offer we may recommend ancillary services to you such as mortgage advice, solicitors and surveyors which we believe will help with your property transaction. We wish to make you aware that should you decide to proceed we may receive a referral fee or equivalent. This could be a fee, commission, payment or other reward. We will not refer your details unless you have provided consent for us to do so. You are not under any obligation to provide us with your consent or to use any of these services. You are also free to choose an alternative provider.

Thinking of selling? For a FREE no obligation quotation call 01636 816200



Richard Watkinson & Partners is the trading name of Richard Watkinson Ltd.
Registered in England. Ltd Registration number: 07140024

20 King Street,
Southwell NG25 0EH
Tel: 01636 816200
Email: southwell@richardwatkinson.co.uk



Surveyors, Estate Agents, Valuers, Auctioneers