



**Galley Hill Cottage, Galley Hill Road,
Southwell, Nottinghamshire, NG25 0PX**

£665,000

Tel: 01636 816200

**RICHARD
WATKINSON
PARTNERS**

Surveyors, Estate Agents, Valuers, Auctioneers

- Attractive Detached Cottage
- Wonderful 0.27 Acre Plot
- Large Lounge/Diner
- Kitchen, Utility, Boot Room
- Driveway & Double Garage
- Fantastic Semi-Rural Setting
- Approx. 2,000 Sq.ft.
- Sitting Room, Conservatory
- 3 Bedrooms & Box/Office
- Incredible Open Views

A rare and unique opportunity to purchase a superbly positioned detached cottage, occupying a wonderful position with spectacular open views and offering character filled accommodation extending to approximately 2,000 square feet.

This individual detached cottage occupies a beautiful and mature plot extending to approximately 0.27 acres and includes driveway parking for several cars, a double garage and delightful sweeping lawns, mature beds and borders and a selection of fruit trees.

Internally the accommodation offers a versatile layout including a large lounge diner across the front, a fitted kitchen with utility then boot room off, a 2nd reception room currently the sitting room with views across the rear and a door into the conservatory.

To the 1st floor are 3 double bedrooms and a box-room-office plus a large family sized bathroom with Italian suite. Viewing is highly recommended to appreciate the fabulous location, gorgeous gardens, and range of accommodation on offer.

ACCOMMODATION

A UPVC double glazed door leads into the entrance porch.

ENTRANCE PORCH

With tiled flooring, a door to the ground floor WC and an attractive solid wood door into the lounge diner.

LOUNGE DINER

A superb and spacious lounge diner located across the front of the property with three UPVC double glazed windows overlooking the front garden. There are three central heating radiators, timber beams to the ceiling and a feature stone fireplace for an open fire with marble hearth and extending to a corner tv stand. A spindled staircase rises to the first floor and a solid wood door leads into the kitchen.

KITCHEN

Fitted with a range of base and wall cabinets with tiled worktops, an inset double bowl sink with mixer tap, a range of built-in appliances including an Indesit double oven, Bosch dishwasher, a four zone electric hob, and an integrated refrigerator. Tiled flooring and tiling for splashbacks, fan assisted radiator, breakfast bar seating, gas fronted display cabinets and corner shelving, beams to the ceiling, an archway into the utility space, UPVC double glazed window into the conservatory and an archway into the dining room.

SITTING ROOM

Used by the current owners as a second sitting room with timber beams to the ceiling, two central heating radiators, UPVC double glazed window looking over the rear gardens and with open views beyond and a panelled door into the conservatory.

CONSERVATORY

Of UPVC double glazed construction with a pitched polycarbonate roof, tiled flooring and French doors onto the gardens.

UTILITY ROOM

A useful additional space with base cabinets, tiled worktops and an inset stainless steel single drainer sink with mixer tap plus space beneath for appliances including plumbing for a washing machine. Tiled flooring, a latch and brace door into a walk-in pantry with shelving, light, UPVC double glazed obscured window and housing the electricity meter and consumer unit. A door leads down to the cellar and a doorway leads into the boot room.

BOOT ROOM

A useful space with tiled flooring, central heating radiator, panelled walls, a door to the outside and a UPVC double glazed door to the side elevation as well as space for additional appliances.

CELLAR

GROUND FLOOR W/C

With cloakroom to the front housing a central heating radiator and coat hooks, latch and brace door into the toilet with a close coupled toilet, wall mounted wash basin, tiled flooring and a UPVC double glazed obscured window to the front aspect.

FIRST FLOOR LANDING

With skylight, access hatch to the roof space and doors off to bedrooms.

BEDROOM ONE

A double bedroom with two central heating radiators, fitted wardrobe, two UPVC double glazed windows to the rear aspect and a door into the en-suite bathroom.

EN-SUITE BATHROOM

A four piece en-suite bathroom including a close coupled toilet, bidet with mixer tap, pedestal wash basin with hot and cold taps and a panel sided bath with hot and cold taps. There is tiling for splashbacks, a central heating radiator, electric shaver point, extractor fan and spotlights to the ceiling plus a UPVC double glazed window to the side aspect.

BEDROOM TWO

A good sized double bedroom with a central heating radiator and UPVC double glazed window to the front aspect. A range of free-standing pine wardrobes are included in the sale.

BEDROOM THREE

A double bedroom with a central heating radiator, UPVC double glazed window to the front

elevation and two useful built-in storage cupboards, one housing the foam insulated hot water cylinder with slatted shelving above.

BOX ROOM

With UPVC double glazed window to the front elevation.

BATHROOM

A large principal bathroom, superbly fitted with a four piece Italian suite including a large corner bath with brass fittings and mixer tap, a close coupled toilet, bidet with mixer tap and pedestal wash basin with mixer tap. Tiling for splashbacks, central heating radiator, UPVC double glazed window to the front aspect, extractor fan and spotlights to the ceiling.

DRIVEWAY, PARKING & DOUBLE GARAGE

Double wrought iron gates at the front of the plot lead via a sweeping driveway to parking for several cars, in turn leading to the detached double garage with up and over door.

GARDENS

The property occupies a delightful and landscaped plot extending to approximately + + + + + + + + + + with a generous shaped lawn to the front edged with well stocked perimeter borders, sweeping lawns to the rear with numerous plants, shrubs and trees including a variety of fruit trees, there is a sizeable patio coming off the conservatory, a winding paved pathway leading to the greenhouse and to a further patio seating area where the summerhouse is located.

COUNCIL TAX BAND

The property is registered as council tax band F



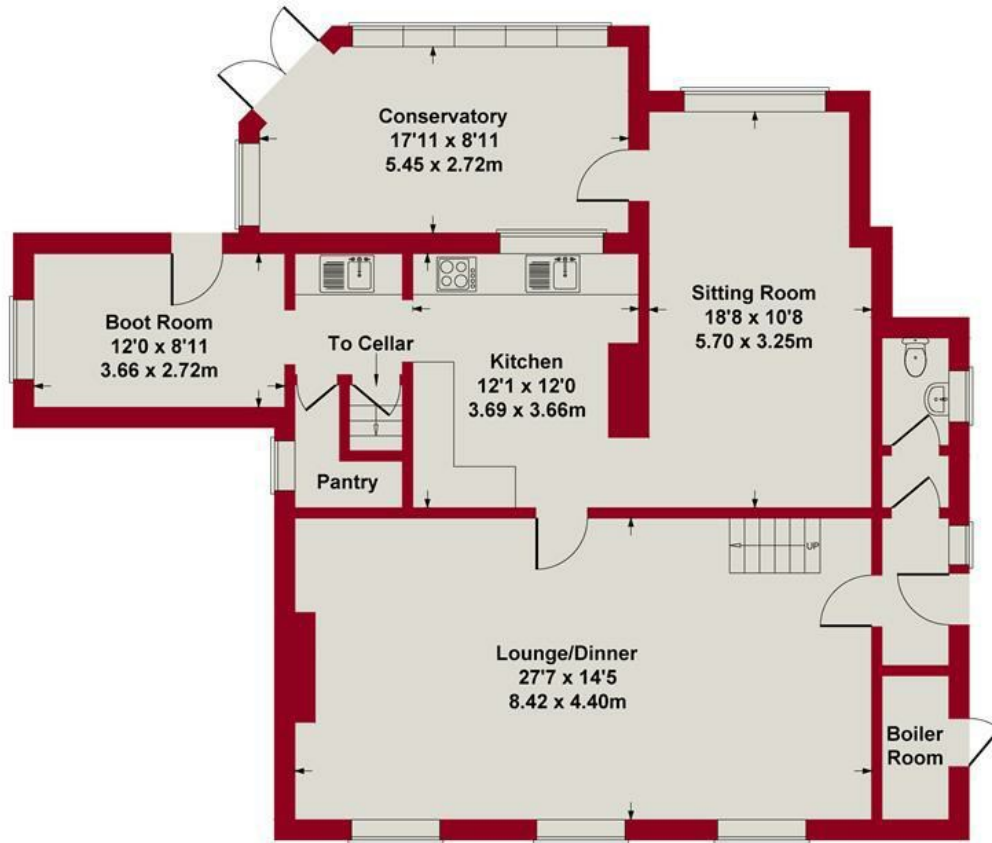




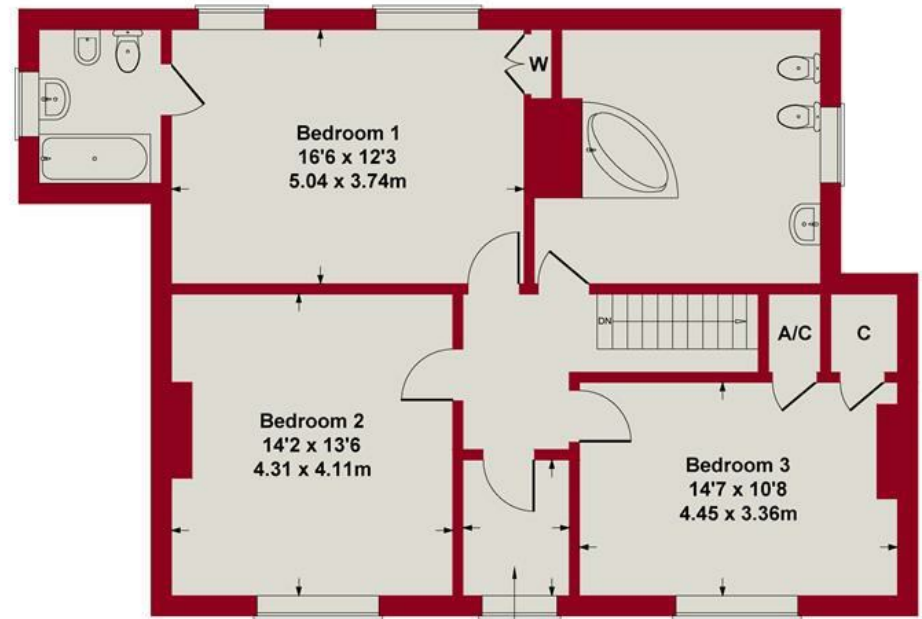




Approximate Gross Internal Area
2110 sq ft - 196 sq m



GROUND FLOOR

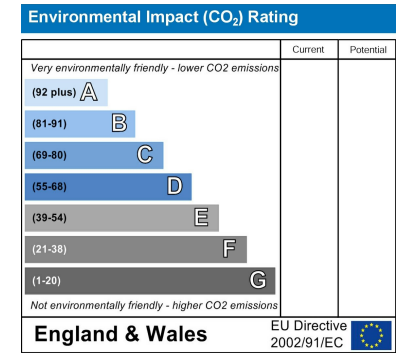
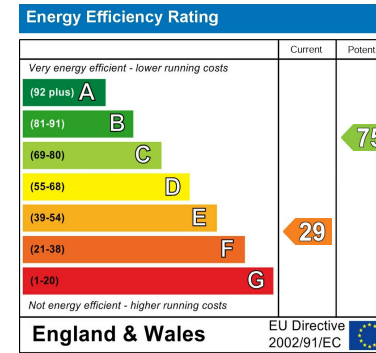


FIRST FLOOR

Whilst every attempt has been made to ensure the accuracy of the floor plan contained here, measurements of doors, windows, rooms and any other items are approximate and no responsibility is taken for any error, omission, or mis-statement. The measurements should not be relied upon for valuation, transaction and/or funding purposes. This plan is for illustrative purposes only and should be used as such by any prospective purchaser or tenant. The services, systems and appliances shown have not been tested and no guarantee as to their operability or efficiency can be given.

Copyright V360 Ltd 2023 | www.houseviz.com





These particulars, whilst believed to be accurate are set out as a general outline only for guidance and do not constitute any part of an offer or contract. Intending purchasers should not rely on them as statements of representation of fact, but must satisfy themselves by inspection or otherwise as to their accuracy. No person in this firm's employment has the authority to make or give any representation or warranty in respect of the property. Any fixtures and fittings not mentioned in these details are excluded from the sale price. No services or appliances which may have been included in these details have been tested by the selling agent and therefore cannot be guaranteed to be in good working order.

As part of the service we offer we may recommend ancillary services to you such as mortgage advice, solicitors and surveyors which we believe will help with your property transaction. We wish to make you aware that should you decide to proceed we may receive a referral fee or equivalent. This could be a fee, commission, payment or other reward. We will not refer your details unless you have provided consent for us to do so. You are not under any obligation to provide us with your consent or to use any of these services. You are also free to choose an alternative provider.

Thinking of selling? For a FREE no obligation quotation call 01636 816200



Richard Watkinson & Partners is the trading name of Richard Watkinson Ltd.
Registered in England. Ltd Registration number: 07140024

20 King Street,
Southwell NG25 0EH
Tel: 01636 816200
Email: southwell@richardwatkinson.co.uk



Surveyors, Estate Agents, Valuers, Auctioneers