



## 16a Glebe Road

Crondall Farnham, GU10 5PJ

£575,000

A brand new built Detached House built to a very high specification.

The large and welcoming Hallway provides access to a large Cloakroom and a Kitchen/Dining Room that stretches across the back of the House and benefits from full Bi-Fold Doors that open onto a super Porcelain tiled Patio. The Living Room is separate and faces to the front.

Upstairs, there are 3 Bedrooms with the Master Bedroom having its own en-suite Shower Room and there's a further fully equipped Bathroom with Shower above and in line with the general specification, these fittings are of a high quality and finish.

Outside, the new brick paved driveway provides off road parking for several vehicles and leads around to a generous rear garden, partly paved with a level grassed area too, the whole being enclosed by shrub borders. With some mature hedging and a few trees to provide partial screening, this House ( and garden ! ) is set in a the popular Village of Crondall, with its amenities only a few minutes walk away and the popular towns of both Farnham and Fleet are less than 10 minutes drive away.

- Brand New Home.
- 3 Bedrooms.
- Peacefully situated.
- 2 Bathrooms & Cloakroom..
- Very high specification.
- Surrey Village location.
- READY IN February.
- Photos for illustrative purposes only
- Council Tax to follow.
- epc rating to follow.

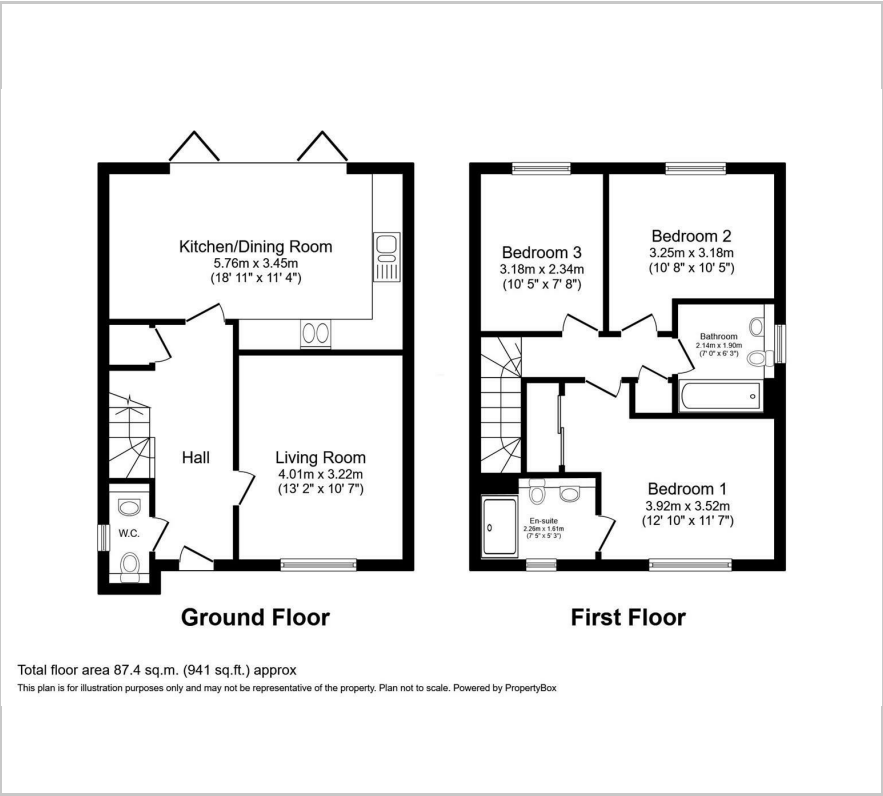
### Viewing

Please contact our Fosters Sales Office on 01252 344333 if you wish to arrange a viewing appointment for this property or require further information.





Floor Plan



Area Map



Energy Efficiency Graph



These particulars, whilst believed to be accurate are set out as a general outline only for guidance and do not constitute any part of an offer or contract. Intending purchasers should not rely on them as statements of representation of fact, but must satisfy themselves by inspection or otherwise as to their accuracy. No person in this firms employment has the authority to make or give any representation or warranty in respect of the property.