



**fosters**  
sales & lettings



## 2 Kingsley Court Windsor Way

Aldershot, GU11 1HZ

Asking Price £50,000

A 1 bedroom ground floor Apartment with access direct out to the gardens!!

This property comes complete with a modern fitted Kitchen and integrated appliances, a large Living/Dining Room, a double Bedroom with built-in wardrobe, a fully tiled Bath/wet-room with non-slip floor and UPVC double glazed windows throughout. As part of the service charges, the Apartment is cleaned internally once a week by the Management Company, residents enjoy daily tea, coffee and biscuits and the expert services of a very well regarded in-house Manager are all included. The development itself boasts a large light & airy communal sitting area, substantial laundry room and beautifully maintained communal grounds. Additionally, there's a highly regarded & competitively priced Restaurant on site.

About Aldershot :

Offering great commuter links including easy access to the M3 and A3, combined with the train station which serves London Waterloo in under an hour, Aldershot is in a great location. The town centre is well located and offers a rich history that can be noted around the areas as well as a choice of leisure facilities including a lido and sports centre, along with two theatres, a cinema and a choice of high street shops, restaurants and parks.

- Over 65's only!
- Rare ground Floor Retirement Flat.
- Door from lounge to garden
- Laundry room and on site resturant.
- Must be viewed.
- Lease 106 Years
- Ground Rent £405 pa
- Service Charge £8110 pa
- Council Tax Band (c) 80
- EPC Energy Rating Band C 82

### Viewing

Please contact our Fosters Sales Office on 01252 344333 if you wish to arrange a viewing appointment for this property or require further information.



1



1

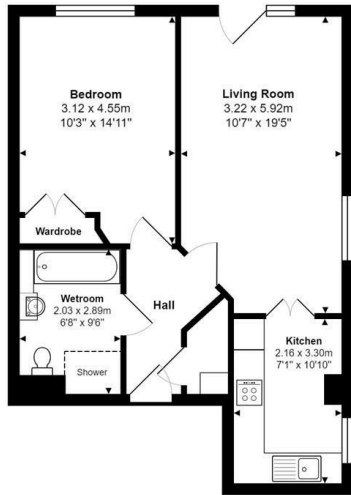


1



B

## Floor Plan



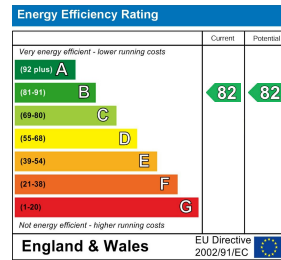
Total Area: 52.8 m<sup>2</sup> ... 568 ft<sup>2</sup>

All measurements are approximate and for display purposes only

## Area Map



## Energy Efficiency Graph



These particulars, whilst believed to be accurate are set out as a general outline only for guidance and do not constitute any part of an offer or contract. Intending purchasers should not rely on them as statements of representation of fact, but must satisfy themselves by inspection or otherwise as to their accuracy. No person in this firm's employment has the authority to make or give any representation or warranty in respect of the property.

The Wellington Centre, 10 Low Walk, Aldershot, Hampshire, GU11 1DB

Tel: 01252 344333 Email: [sales@fostersestateagents.com](mailto:sales@fostersestateagents.com) <https://fostersestateagents.com/>