



fosters
sales & lettings



14 Orchard Gardens

Aldershot, GU12 4HP

Offers In The Region Of £400,000

A classic 1930's bay-fronted Semi located in a very quiet close. Benefits include off road parking, a detached Garage and a lovely rear garden which has been lovingly kept with a variety of greenery.

The House is as originally built with 2 separate reception rooms and a galley Kitchen whilst the first floor has 3 Bedrooms and a refitted Bathroom. The House has replacement double glazing throughout, gas CH and whilst presented very nicely, there's scope to update, remodel and extend.

Situated in a quiet close, it's within walking distance of local shops, Manor Park and schools for children of all ages.

- 3 Bedroom Semi-Detached House.
- Bay fronted.
- Quiet and safe location.
- Super Gardens.
- Garage and Driveway.
- Scope to extend/remodel.
- Council Tax Band D.
- Epc rating D (55).

Viewing

Please contact our Fosters Sales Office on 01252 344333 if you wish to arrange a viewing appointment for this property or require further information.



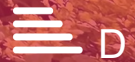
3



1

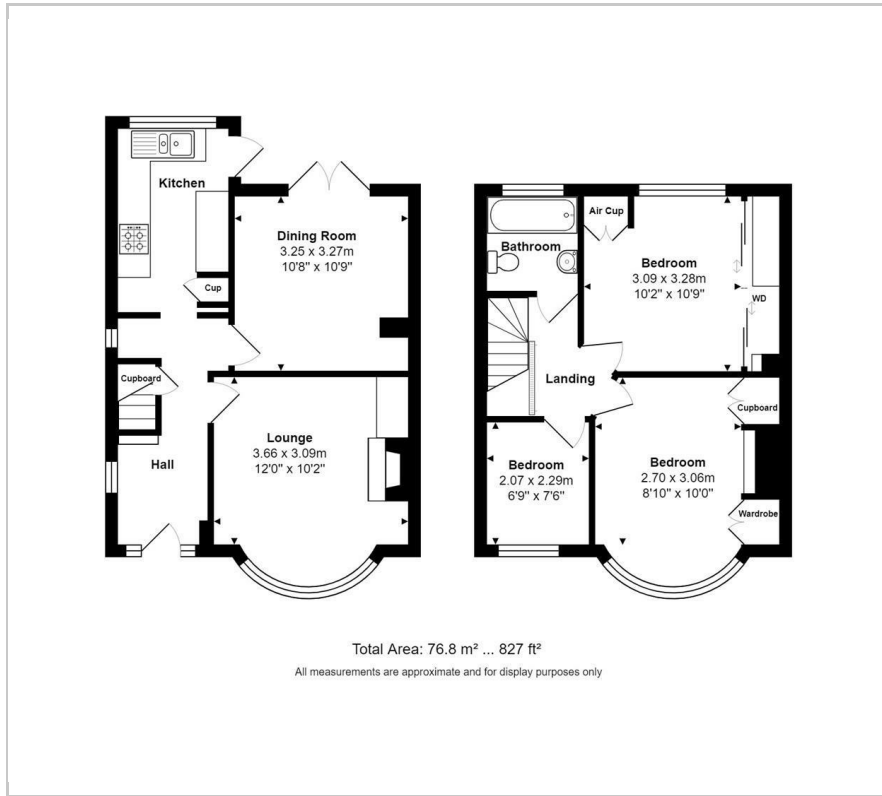


2



D

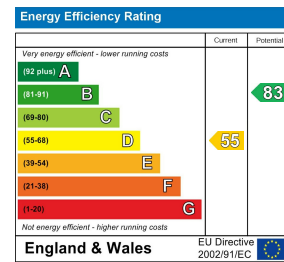
Floor Plan



Area Map



Energy Efficiency Graph



These particulars, whilst believed to be accurate are set out as a general outline only for guidance and do not constitute any part of an offer or contract. Intending purchasers should not rely on them as statements of representation of fact, but must satisfy themselves by inspection or otherwise as to their accuracy. No person in this firm's employment has the authority to make or give any representation or warranty in respect of the property.