



fosters
sales & lettings



69 Northcote Road

Ash Vale, GU12 5LX

Asking Price £200,000

This 1 Bedroom Freehold House is situated on the popular Avondale Estate and is within a few minutes walk of both North Camp and Ash Vale railway stations along with a Tesco's express, overlooking an attractive green area the property also offers a garage in block and parking is also available in the surrounding car parks and roads.

Perfect for a first time buyer or an Investor, the property is fully compliant for Letting and can be offered for sale with an existing Tenant in situ on an Assured Shorthold Tenancy, with a current monthly rental of £1000.

To book your viewing, please contact us for further details.

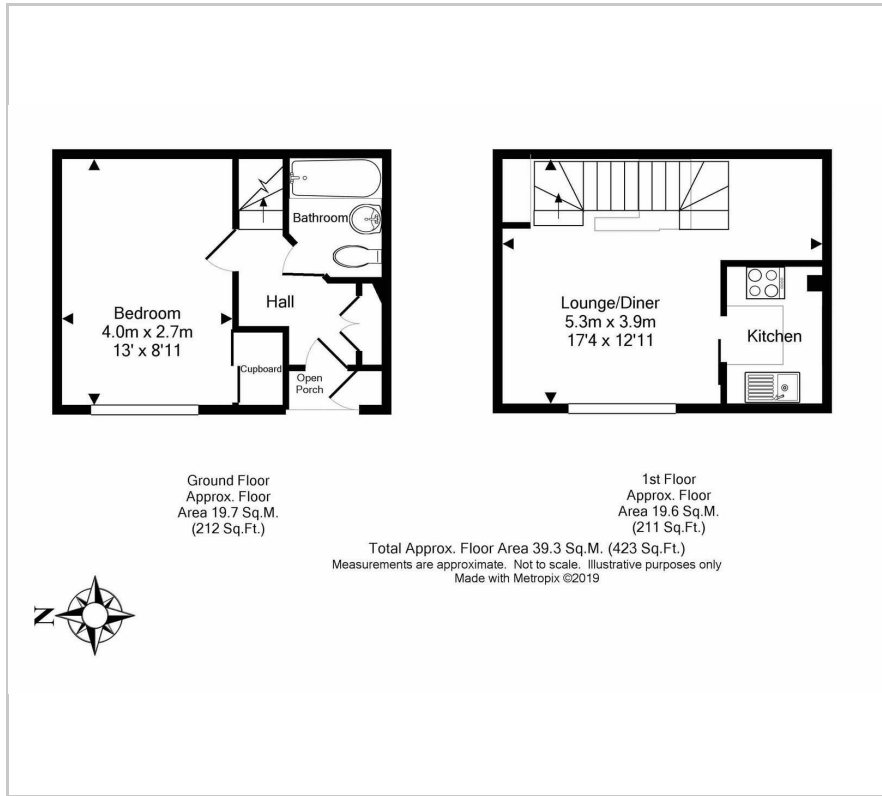
- Double bedroom
- Close to station
- Lettable value approx £1k per month
- Garage in block
- Double glazed
- Popular estate
- No onward chain
- Residents Service charge applicable
- Council tax band B
- EPC energy rating band (e) 50

Viewing

Please contact our Fosters Sales Office on 01252 344333 if you wish to arrange a viewing appointment for this property or require further information.



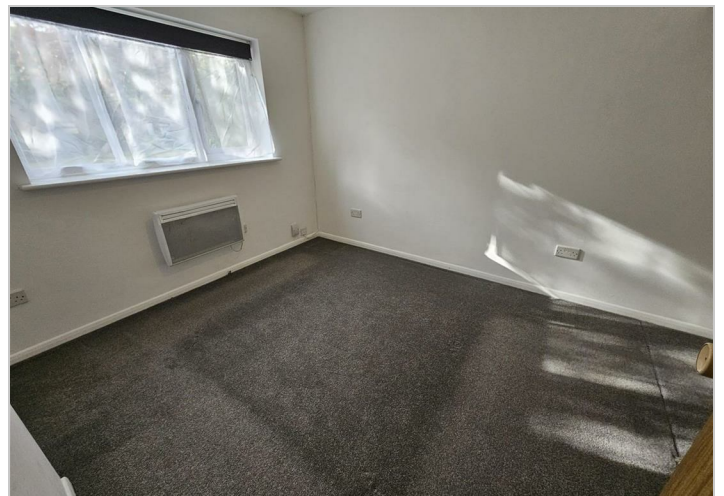
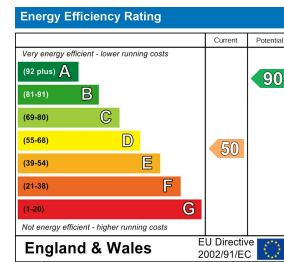
Floor Plan



Area Map



Energy Efficiency Graph



These particulars, whilst believed to be accurate are set out as a general outline only for guidance and do not constitute any part of an offer or contract. Intending purchasers should not rely on them as statements of representation of fact, but must satisfy themselves by inspection or otherwise as to their accuracy. No person in this firm's employment has the authority to make or give any representation or warranty in respect of the property.