



St. Annes Court Northenden Road, Sale, M33 3HB

£230,000

www.jordanfishwick.co.uk





jordan fishwick

- NO ONWARD CHAIN
- SITUATED ON THE POPULAR NORTHENDEN ROAD
- TWO WELL PROPORTIONED BEDROOMS
- EPC C AND COUNCIL TAX BAND B
- SPACIOUS FIRST FLOOR FLAT
- CLOSE PROXIMITY TO GREAT TRANSPORT LINKS INTO THE CITY
- LARGE SITTING/DINING ROOM WITH FEATURE BAY WINDOW
- READY TO MOVE IN!

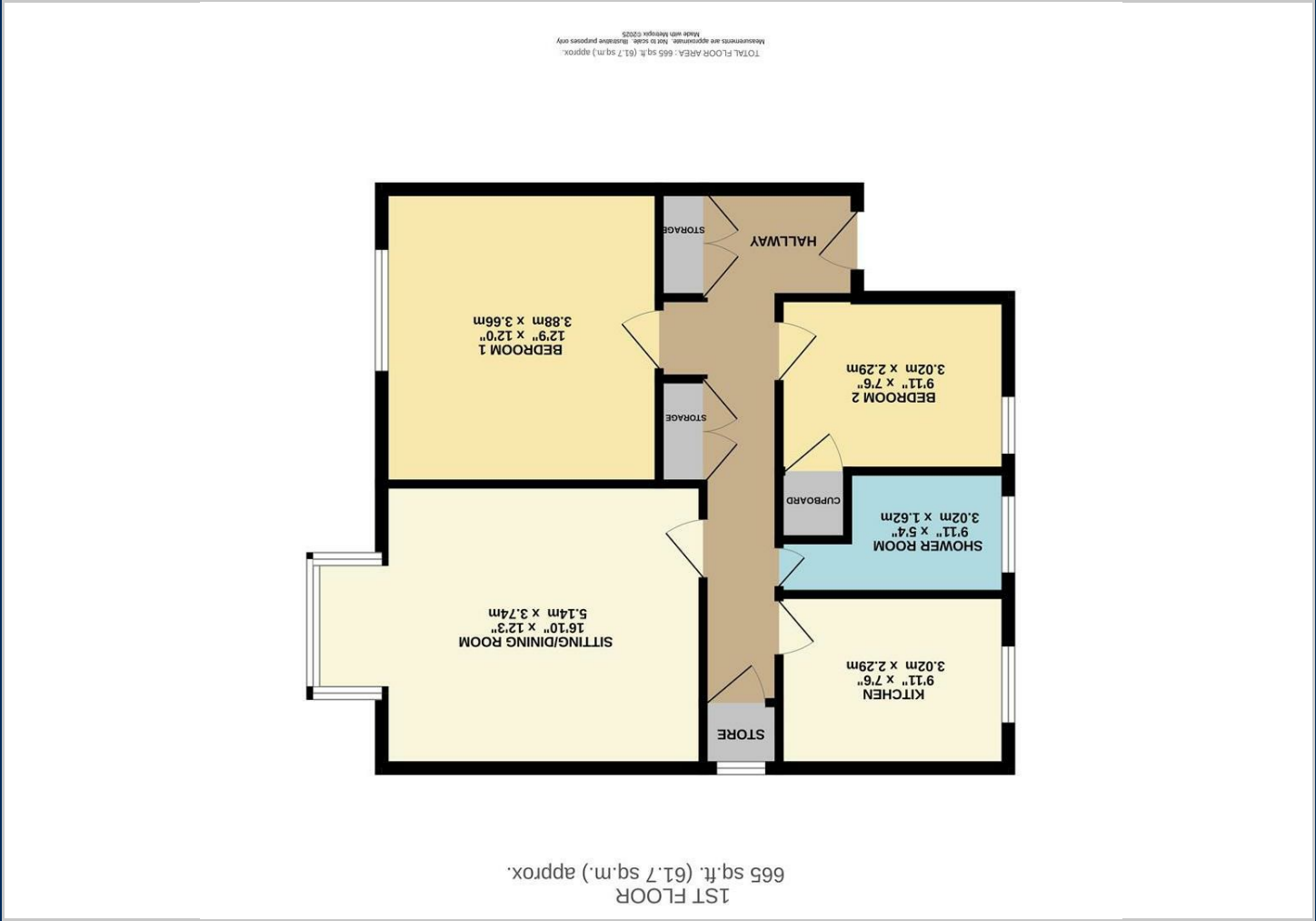
Offered for sale with no onward chain, this spacious first-floor flat is ideally positioned on the ever-popular Northenden Road in Sale, placing a wide range of shops, cafés, restaurants and excellent transport links quite literally on your doorstep.

The accommodation is generously proportioned throughout and is highlighted by a large sitting/dining room, featuring an attractive bay window that floods the space with natural light and creates an ideal setting for both relaxing and entertaining.

The property benefits from two well-proportioned bedrooms, offering flexible accommodation suitable for sleeping, home working or guest use.

This well-located property represents an excellent opportunity for first-time buyers, downsizers or investors alike, combining space, convenience and a highly sought-after location.





Viewing

Please contact our Sale Office on 0161 962 2828 if you wish to arrange a viewing appointment for this property or require further information.

The particulars are set out as a general outline only for the guidance of intended purchasers or lessees, and do not constitute, any part of a contract. Nothing in these particulars shall be deemed to be a statement that the property is in good structural condition or otherwise nor that any of the services, appliances, equipment or facilities are in good working order. Purchasers should satisfy themselves of this prior to purchasing.

