



7 Peterwood Gardens, Manchester, M32 9EP

Offers Over £150,000

www.jordanfishwick.co.uk





jordan fishwick

- Two Bedroom First Floor Flat
- 75% Shared Ownership
- Easy Motorway Access
- Private Entrance
- EPC Rating C
- Over 55s
- Cul-De-Sac Location
- Well Maintained Communal Gardens and Allocated Parking
- Trafford Council - Tax Band A
- Leasehold - 76 Years Remaining

Over 55's two bedroom first floor maisonette situated on a quiet cul-del-sac within close proximity to Stretford Meadows and within easy access to the M60. The property is ideally located close to shops and amenities and is offered on a 75% shared ownership basis.

The property briefly comprises; private entrance, hallway with ample storage, generous living/dining room, kitchen, sizable master bedroom, second single room and a three piece bathroom.

Externally the property benefits from well maintained communal, ideal for socialising and allocated parking.

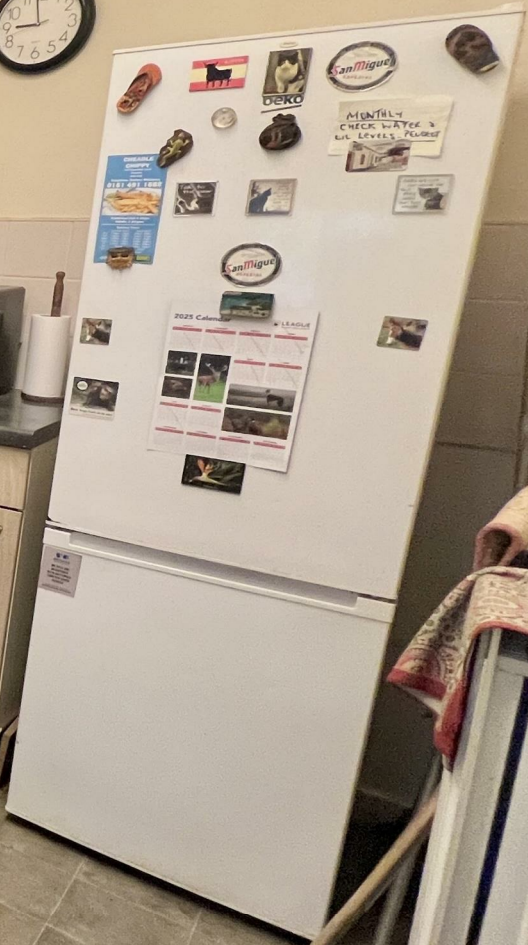
EPC - C
Council Tax Band - A



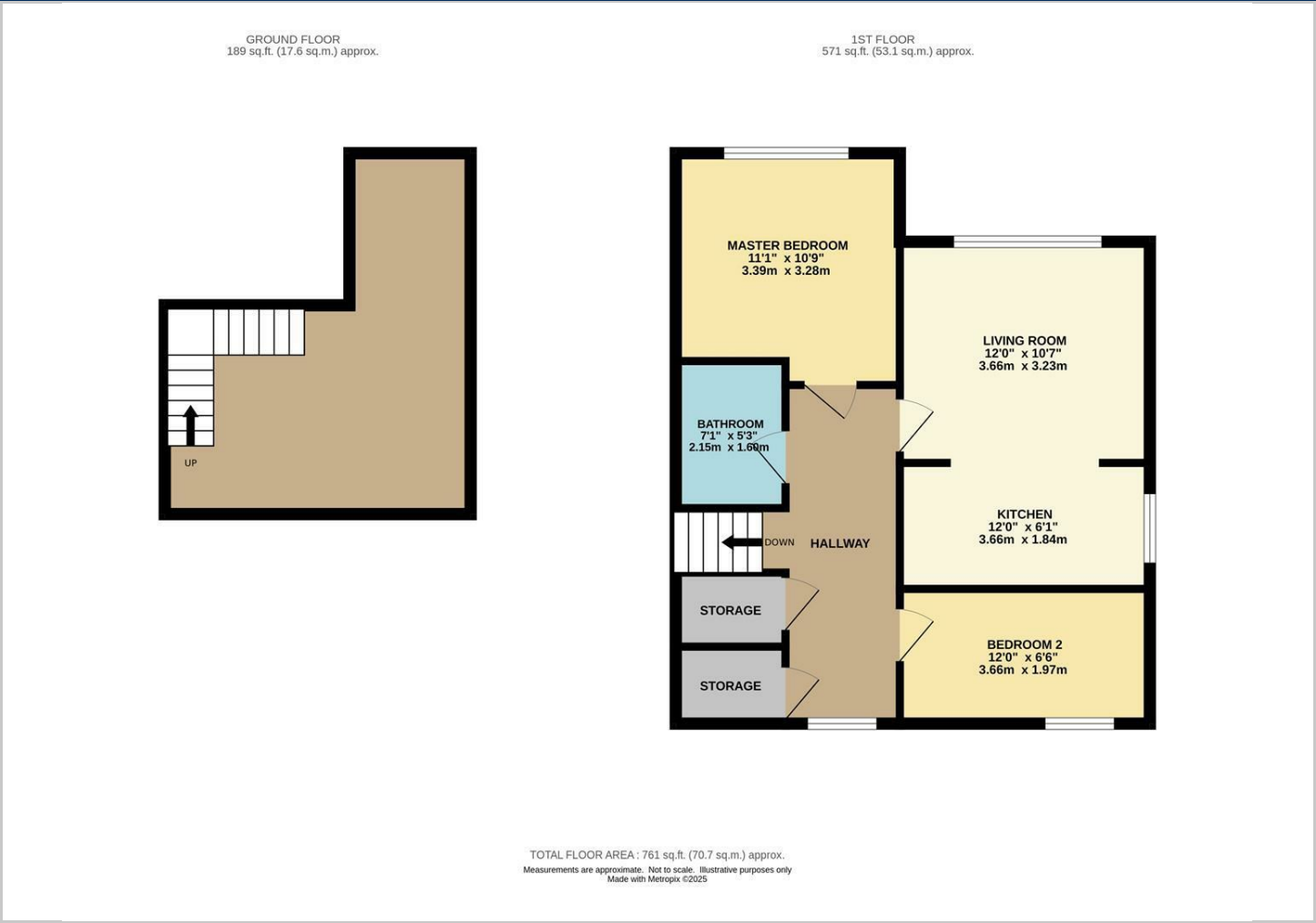


BREAD

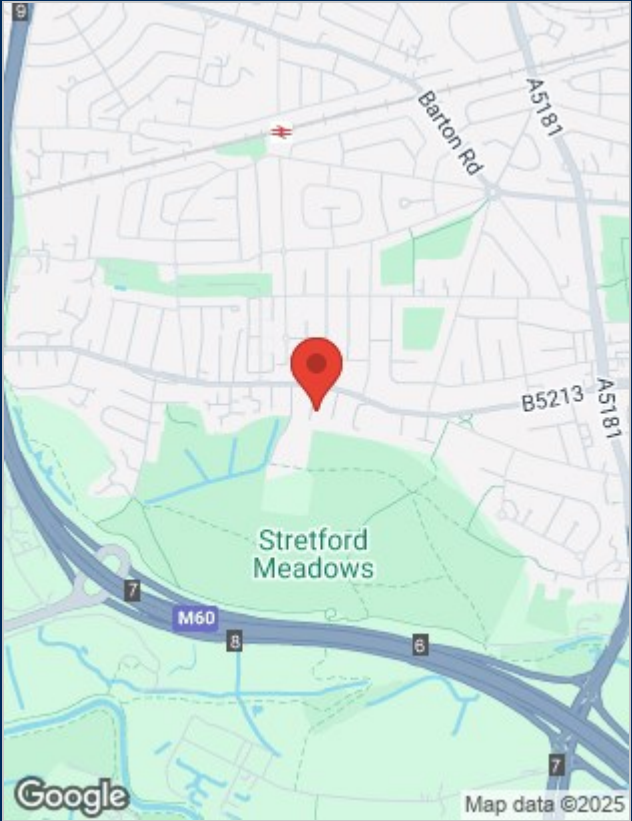
Hotpoint



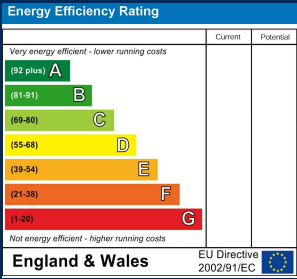
Floor Plans



Location Map



Energy Performance Graph



Viewing

Please contact our Sale Office on 0161 962 2828 if you wish to arrange a viewing appointment for this property or require further information.

The particulars are set out as a general outline only for the guidance of intended purchasers or lessees, and do not constitute, any part of a contract. Nothing in these particulars shall be deemed to be a statement that the property is in good structural condition or otherwise nor that any of the services, appliances, equipment or facilities are in good working order. Purchasers should satisfy themselves of this prior to purchasing.