



jordan fishwick

SALE
Alma Road



Alma Road, Sale, M33 4HD

£2,100 PCM



The Property

*** AVAILABLE END OF AUGUST *** Alma Road, Sale
Partly refurbished three/four bedroom detached family home situated within a cul-de-sac location close to Tyntesfield Primary School. To the ground floor there is: entrance hall, lounge, dining room, morning room leading to the fitted kitchen with appliances. Additional reception room which can be used as a bedroom. To the first floor there are three bedrooms with en-suite shower room to the master and family bathroom. The bathrooms benefit from underfloor heating.
Enclosed Sunny gardens to the front and rear. Private off road parking. Offered on a part furnished basis. Call now to view - 0161 976 5080

Directions

M33 4HD



- FOUR BEDROOMS
- THREE RECEPTION ROOMS
- TWO BATHROOMS
- DETACHED
- PART FURNISHED
- EPC RATING - C
- COUNCIL TAX BAND E

Postcode - M33 4HD

EPC Rating - C

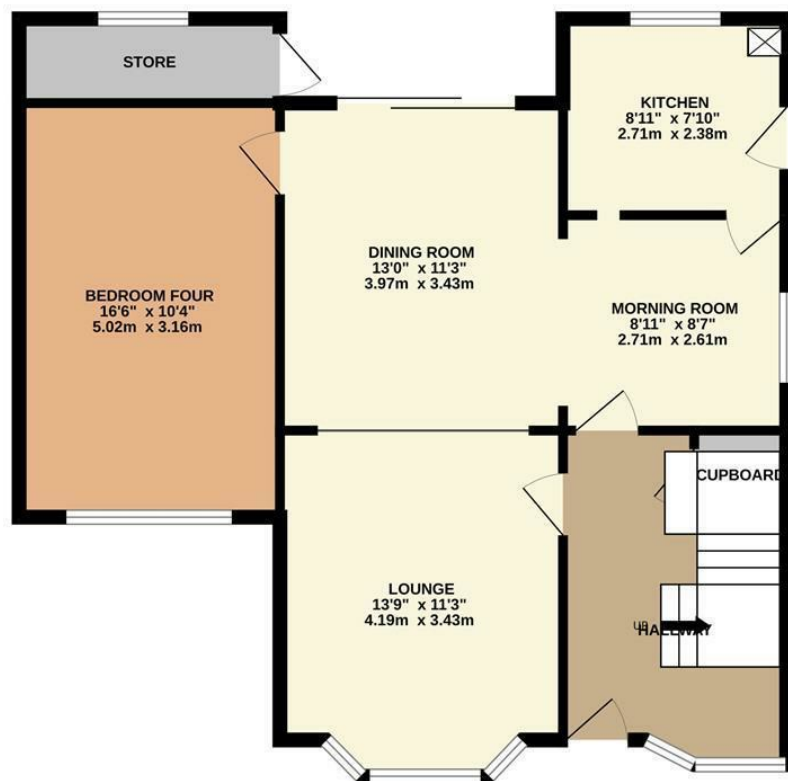
Floor Area - sq ft

Local Authority - TRAFFORD

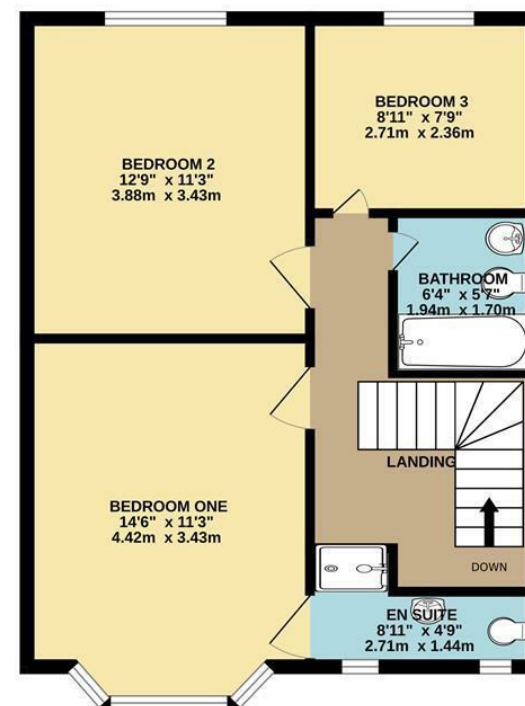
Council Tax - E



GROUND FLOOR
759 sq.ft. (70.5 sq.m.) approx.



1ST FLOOR
529 sq.ft. (49.1 sq.m.) approx.



TOTAL FLOOR AREA : 1288 sq.ft. (119.7 sq.m.) approx.
Measurements are approximate. Not to scale. Illustrative purposes only
Made with Metropix ©2023



These particulars are believed to be accurate but they are not guaranteed and do not form a contract. Neither Jordan Fishwick nor the vendor or lessor accept any responsibility in respect of these particulars, which are not intended to be statements or representations of fact and any intending purchaser or lessee must satisfy himself by inspection or otherwise as to the correctness of each of the statements contained in these particulars. Any floorplans on this brochure are for illustrative purposes only and are not necessarily to scale.

Offices at: Chorlton, Didsbury, Disley, Hale, Glossop, Macclesfield, Manchester Deansgate, Manchester Whitworth Street, New Mills, Sale, Wilmslow and Withington

01619291994

halemanagement@jordanfishwick.co.uk
www.jordanfishwick.co.uk