



jordan fishwick

MANCHESTER
Rissington Avenue



The Property

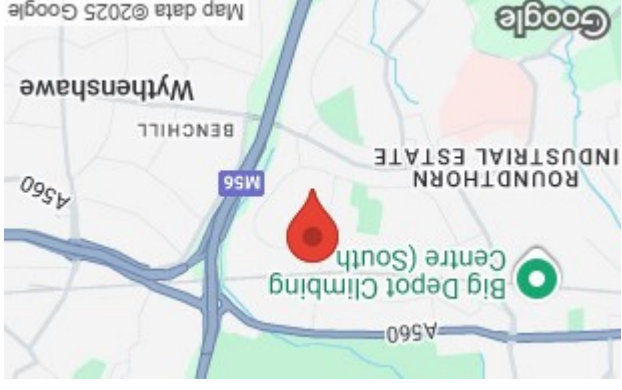
CHAIN FREE

Immaculately presented three bedroom semi-detached ideally situated within easy reach of the Metrolink and motorway access. Both Manchester Airport & Wythenshawe Hospital are also close by.

Comprising in brief; entrance hallway, a spacious cosy lounge, fitted kitchen/dining room and understairs storage. To the first floor there are two double bedrooms, a third single room perfect for an office and a modern three piece bathroom with a shower over the bath.

Externally, the property benefits from beautifully maintained front and rear gardens, with gated access round the side. There is also a large gated block paved driveway to the front of the property, suitable for multiple cars.

Council Tax Band C, EPC E.



M23 1LN

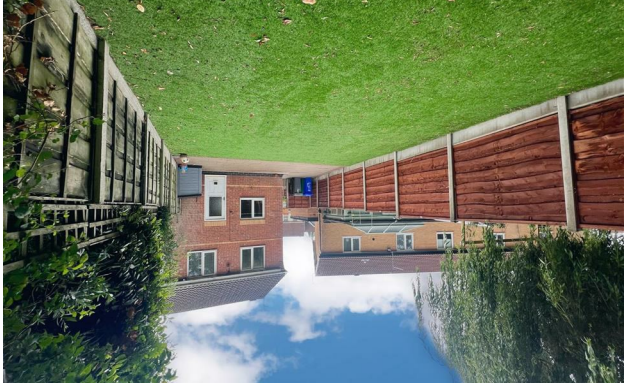
Directions



**Rissington Avenue,
Manchester, M23 1LN**

£300,000

- CHAIN FREE
- Beautifully Presented Three Bed Semi Detached
- Generous Kitchen/Dining Room
- Large Driveway
- Sizeable Private Garden
- Easy Access to Airport/Motorway Links/Hospital
- Council Tax Band C
- EPC Rating C



Postcode - M23 1LN

EPC Rating - C

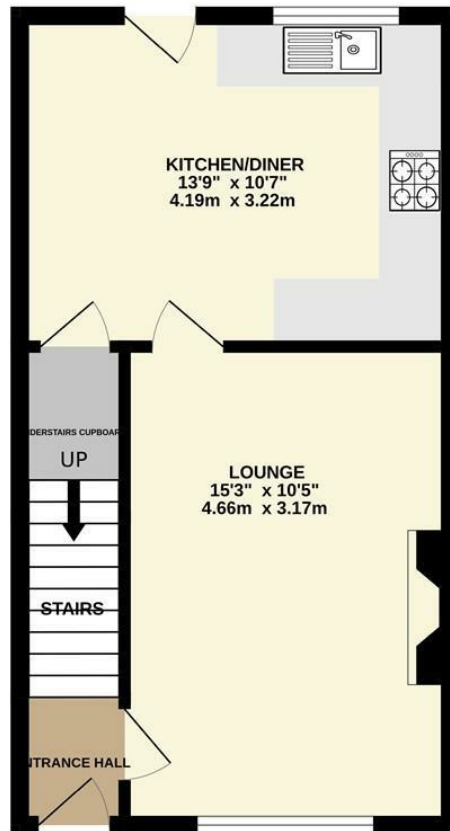
Floor Area - sq ft

Local Authority - Manchester

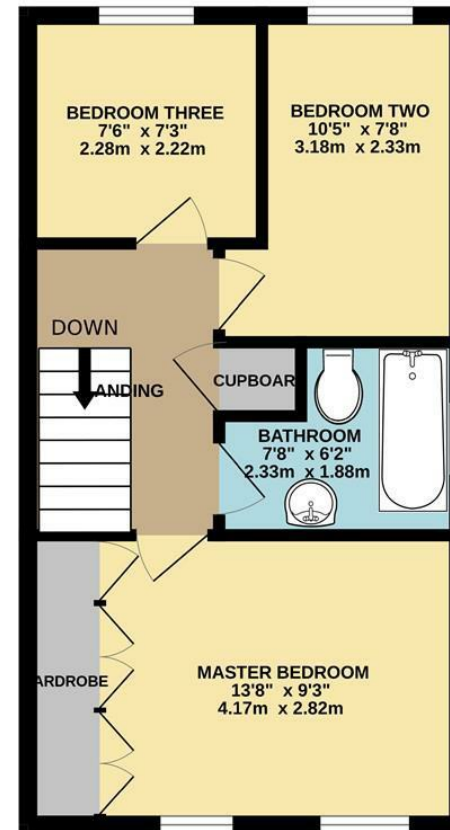
Council Tax - C



GROUND FLOOR
350 sq.ft. (32.5 sq.m.) approx.



1ST FLOOR
355 sq.ft. (33.0 sq.m.) approx.



TOTAL FLOOR AREA : 706 sq.ft. (65.6 sq.m.) approx.
Measurements are approximate. Not to scale. Illustrative purposes only
Made with Metropix ©2025