



Apt 16 248 Lawnhurst Avenue, Manchester, M23 9SB

By Auction £135,000

www.jordanfishwick.co.uk



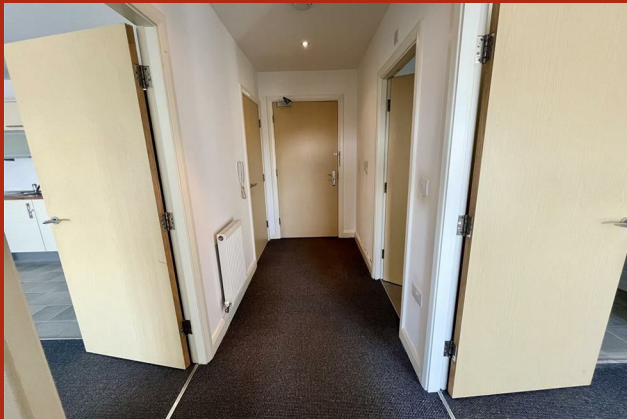


jordan fishwick

- 3rd Floor Apartment
- Lift Access
- Close to Metrolink
- Council Tax Band B
- EPC Rating C
- Spacious Living Room
- Residents Parking
- NO CHAIN
- Lease Length 130 years remaining

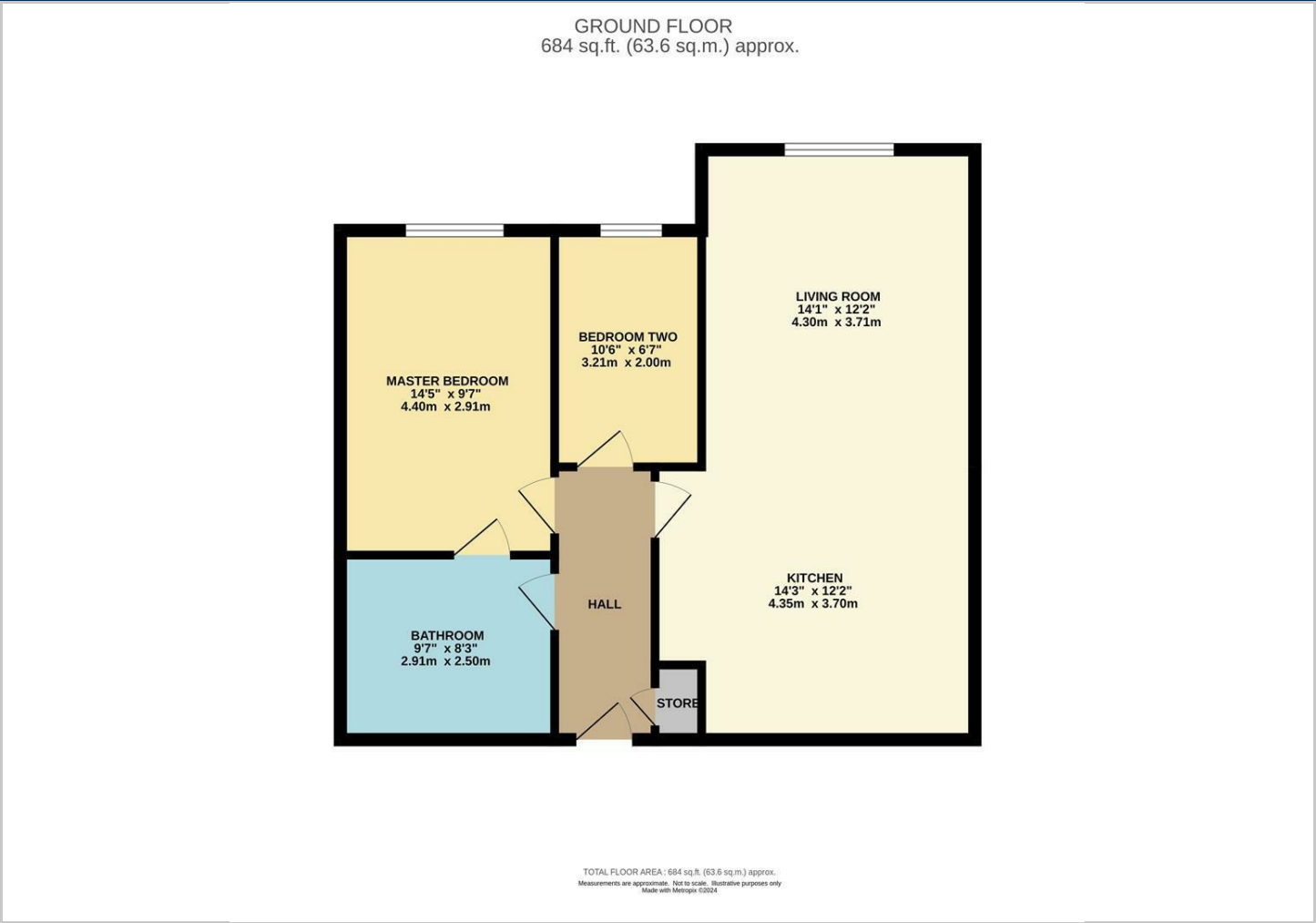
Modern two bedroom third floor apartment with LIFT ACCESS. Great investment opportunity - potential rental income £1,000pcm.

Short walk to Moor Road Metrolink station and easy access to Brookway Retail Park, motorway links, Manchester airport, Wythenshawe hospital and good schools. The property briefly comprises: communal entrance with inter





Floor Plans

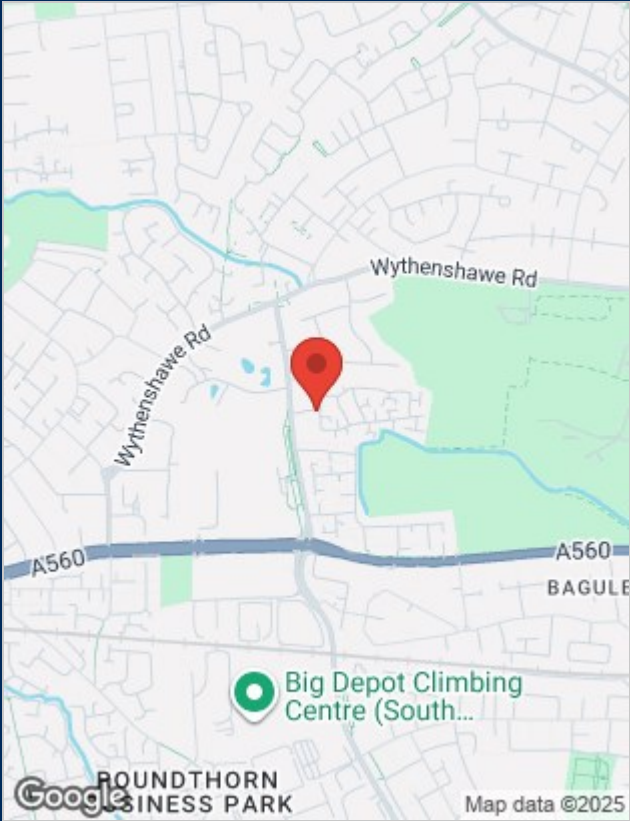


Viewing

Please contact our Sale Office on 0161 962 2828 if you wish to arrange a viewing appointment for this property or require further information.

The particulars are set out as a general outline only for the guidance of intended purchasers or lessees, and do not constitute, any part of a contract. Nothing in these particulars shall be deemed to be a statement that the property is in good structural condition or otherwise nor that any of the services, appliances, equipment or facilities are in good working order. Purchasers should satisfy themselves of this prior to purchasing.

Location Map



Energy Performance Graph

