



SOLD
jordan fishwick
0161-962 2828
www.jordanfishwick.co.uk



29 Lynwood Grove, Sale, M33 2AN

A beautifully presented four/five bedroom period terrace, renovated to a high spec throughout boasting over 1800sq feet. Located in a sought-after area with easy access to motorway networks, excellent transport links and within walking distance to Sale town centre.

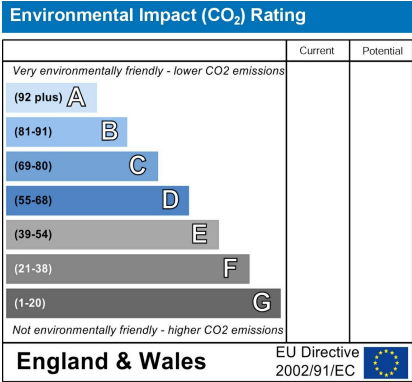
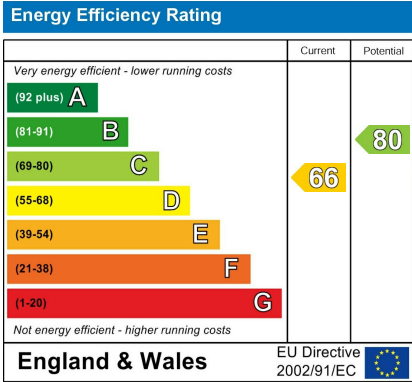
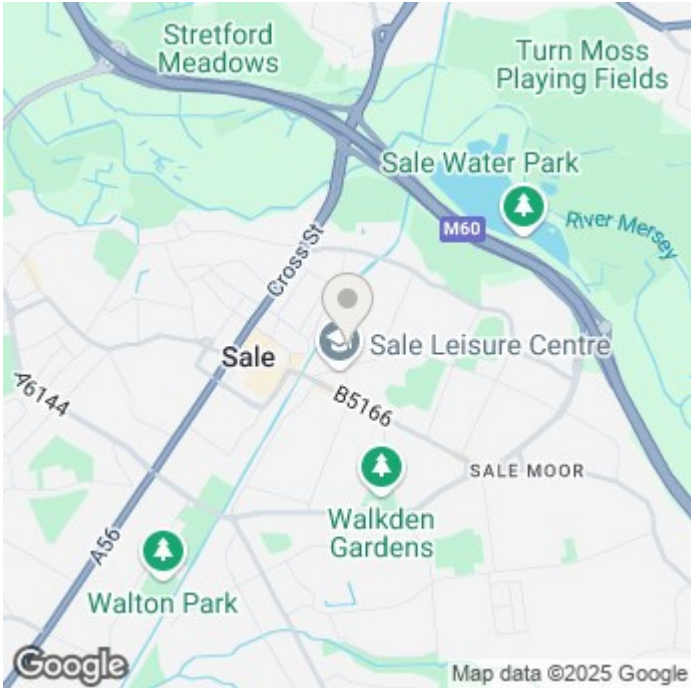
Comprising briefly; entrance hall, spacious lounge, dining room, WC and fitted kitchen with patio doors. To the first floor, three double bedrooms and a four piece family bathroom. Generous master bedroom and four piece en-suite to the second floor. The property also benefits from a converted basement, comprising a double bedroom, spacious reception room, three piece bathroom and utility space. Externally, the front is on street parking and to the rear, the property benefits from a generous, well-maintained garden.

£600,000

Viewing arrangements

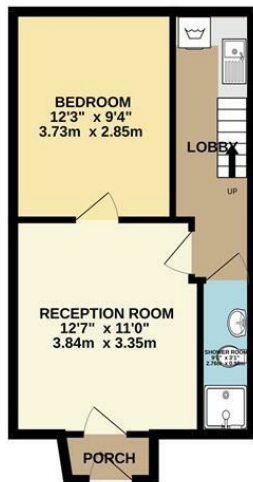
Viewing strictly by appointment through the agent

95-97 School Road, Sale, Cheshire, M33 7XA 0161 962 2828

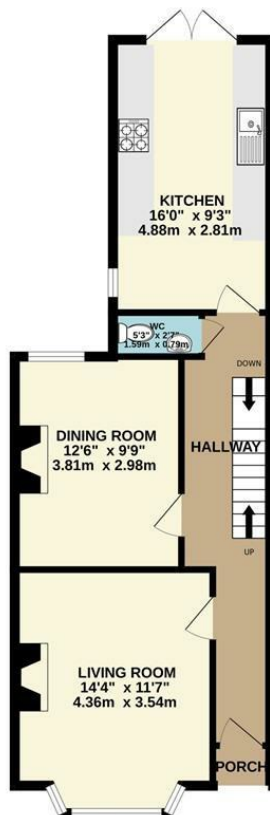




BASEMENT
362 sq.ft. (33.6 sq.m.) approx.



GROUND FLOOR
548 sq.ft. (50.9 sq.m.) approx.



1ST FLOOR
534 sq.ft. (49.6 sq.m.) approx.



2ND FLOOR
372 sq.ft. (34.5 sq.m.) approx.



TOTAL FLOOR AREA : 1815 sq.ft. (168.6 sq.m.) approx.
Measurements are approximate. Not to scale. Illustrative purposes only
Made with Metropix ©2024



These particulars are believed to be accurate but they are not guaranteed and do not form a contract. Neither Jordan Fishwick nor the vendor or lessor accept any responsibility in respect of these particulars, which are not intended to be statements or representations of fact and any intending purchaser or lessee must satisfy himself by inspection or otherwise as to the correctness of each of the statements contained in these particulars. Any floorplans on this brochure are for illustrative purposes only and are not necessarily to scale.

Offices at: Chorlton, Didsbury, Disley, Hale, Glossop, Macclesfield, Manchester Deansgate, Manchester Whitworth Street, New Mills, Sale, Wilmslow and Withington

95-97 School Road, Sale, Cheshire, M33 7XA

0161 962 2828

sale@jordanfishwick.co.uk
www.jordanfishwick.co.uk

