



**Apt 10 Holmdale Court, Sale, M33 3HB**

£225,000

[www.jordanfishwick.co.uk](http://www.jordanfishwick.co.uk)









# jordan fishwick

- Second Floor Two Double Bedroom Apartment
- Lift Access
- Juliet Balcony
- 965 Years Remaining on the Lease
- Council Tax Band C
- NO CHAIN
- Ensuite Shower Room
- Central Location
- Service Charge £1,596
- EPC Rating C

Two double bedroom apartment situated on the top floor of a popular residential block on the corner of Northenden Road and Derbyshire Road South. Within close proximity to Sale Town Centre/Metrolink and Sale Moor with a range of amenities.

Benefitting from both stair and LIFT access, this property is bound to appeal to a range of buyers. Requiring a degree of modernisation, the apartment comprises: entrance hall, spacious lounge with sliding door to a Juliet balcony, kitchen with space for breakfast table, two double bedrooms with fitted wardrobes and ensuite shower room to the master and bathroom with three piece suite. Double glazed throughout with secondary glazing units fitted to the bedrooms, electric room heating and loft access.

Externally, there are well maintained gardens and parking for residents.

965 Years Remaining on the Lease. Service Charge £1,596. Council Tax Band C. EPC Rating C.

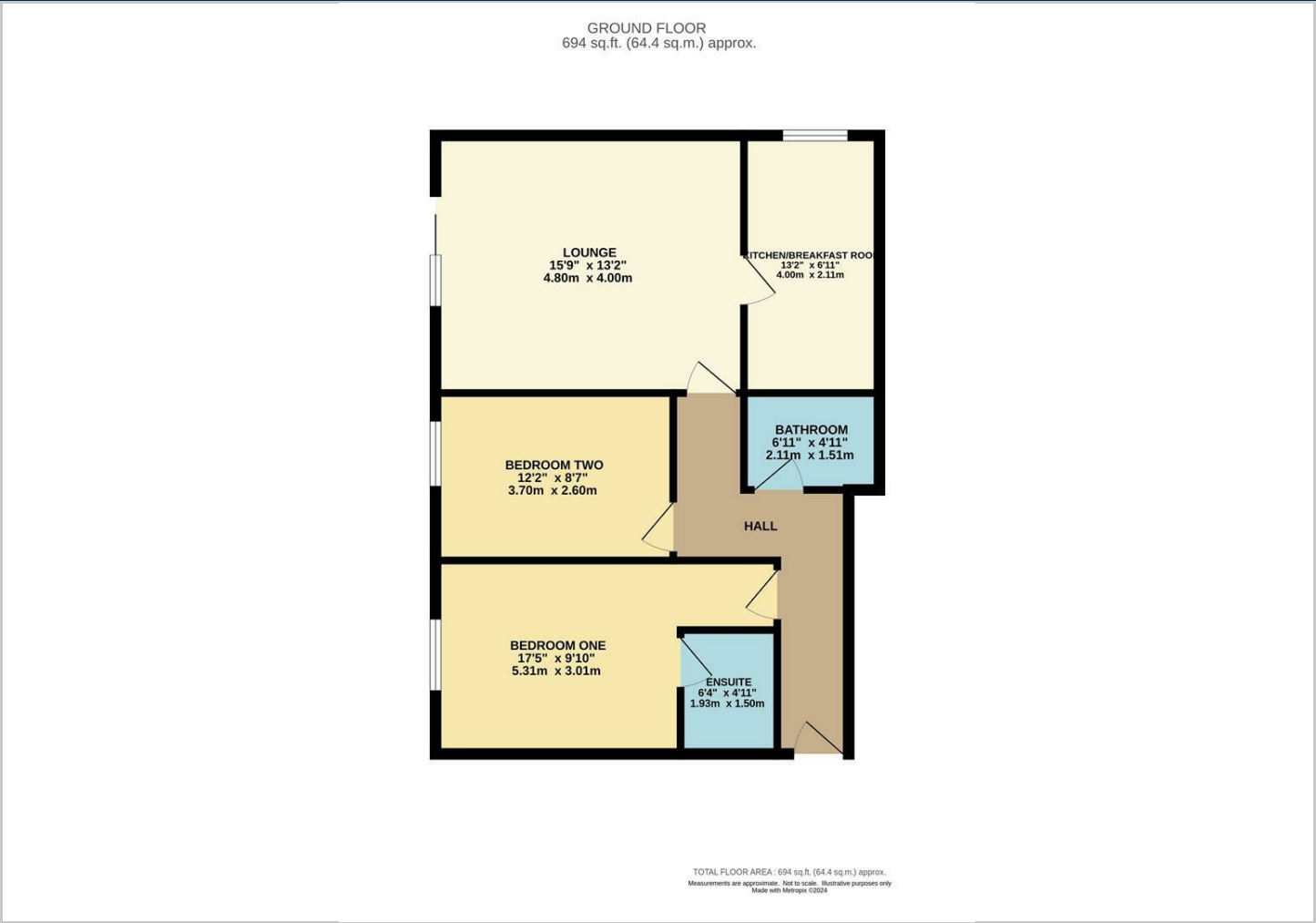








Floor Plans



Viewing

Please contact our Sale Office on 0161 962 2828 if you wish to arrange a viewing appointment for this property or require further information.

The particulars are set out as a general outline only for the guidance of intended purchasers or lessees, and do not constitute, any part of a contract. Nothing in these particulars shall be deemed to be a statement that the property is in good structural condition or otherwise nor that any of the services, appliances, equipment or facilities are in good working order. Purchasers should satisfy themselves of this prior to purchasing.

Location Map



Energy Performance Graph

