



Apt 8 Maple Brook Lodge, Manchester, M23 9QU

Offers Over £220,000

www.jordanfishwick.co.uk





Jordan fishwick

- No Chain
- En Suite Shower Room
- Service Charge £175 p/m
- Rental Potential £1200 per month
- Trafford Council Tax Band D
- Two Double Bedroom Top Floor Apartment
- Close to M60 Network
- 979 Years on Lease Remaining
- EPC Rating C
- Sought After Location

Well presented, LARGER THAN AVERAGE, top floor apartment located in a well-kept development off Brooklands Road, a popular central location.

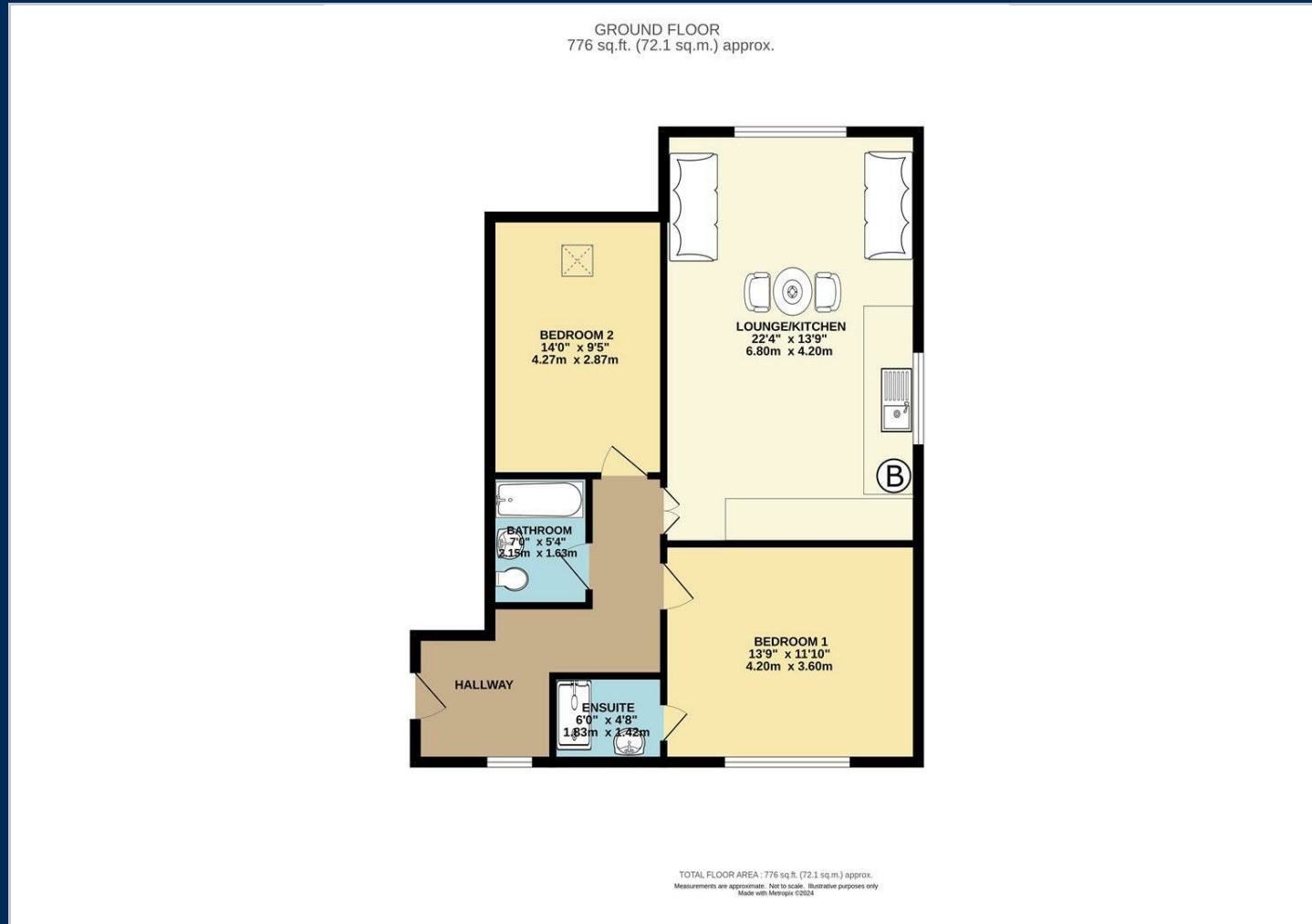
In brief the well planned accommodation comprises; communal entrance hallway, large private entrance hallway, open plan lounge/dining/fitted kitchen, two bedrooms one with en-suite shower room and a family bathroom. The property benefits from gas fired central heating, double glazing, secure gated parking and communal gardens.

Service charge £175 p/m 999 Year Lease from 2004. (Tax Band D) (EPC - C)





Floor Plans

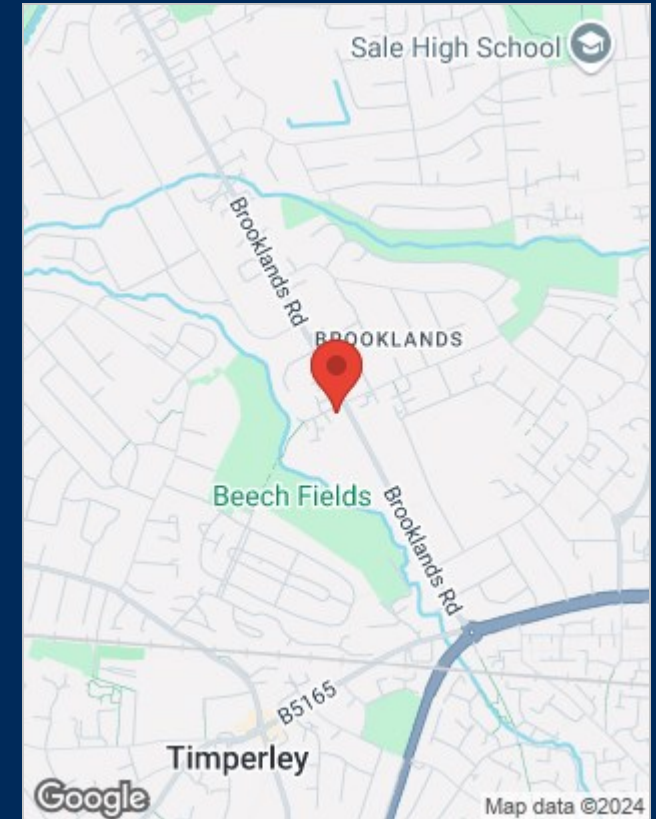


Viewing

Please contact our Sale Office on 0161 962 2828 if you wish to arrange a viewing appointment for this property or require further information.

The particulars are set out as a general outline only for the guidance of intended purchasers or lessees, and do not constitute, any part of a contract. Nothing in these particulars shall be deemed to be a statement that the property is in good structural condition or otherwise nor that any of the services, appliances, equipment or facilities are in good working order. Purchasers should satisfy themselves of this prior to purchasing.

Location Map



Energy Performance Graph

