



Flat K Oakleigh House, Sale, M33 4PH

Offers Invited £285,000

www.jordanfishwick.co.uk

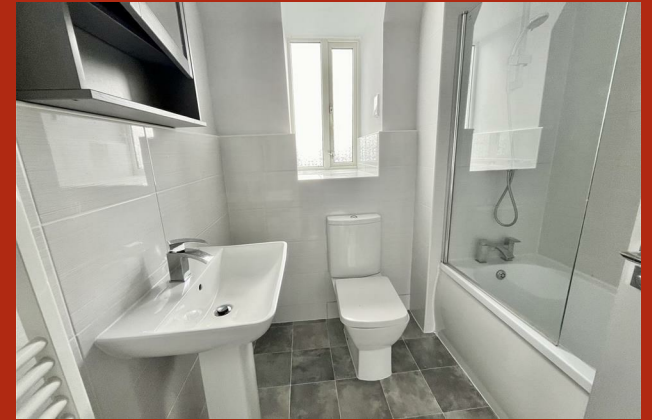




Jordan Fishwick

- Two Bed Top Floor Apartment - No Chain
- Characterful Communal Entrance
- Modern Fitted Bathroom
- Communal Parking
- Council Tax Band B
- Forming Part Of A Detached Period Conversion
- Modern Fitted Kitchen
- Generous Size Communal Gardens
- EPC Rating C
- GR £174.48 for 6 months & SC £2,471.52 PA

A stunning VICTORIAN CONVERSION JUST OFF THE AVENUE one of Sale's most tree lined roads. * TWO DOUBLE BEDROOM TOP FLOOR APARTMENT * This apartment blends the period character with a contemporary finish and has been beautifully finished to create a modern bright space. Accommodation offers OVER 700 SQ FT comprising: Entrance Hall, Lounge, Kitchen, Two bedrooms, a Study and a Bathroom with shower over bath. The building itself is set in lovely grounds and in a fantastic location which ensures this apartments popularity. NO CHAIN!! EPC Rating C. Council Tax Band B. Wall mounted gas boiler.

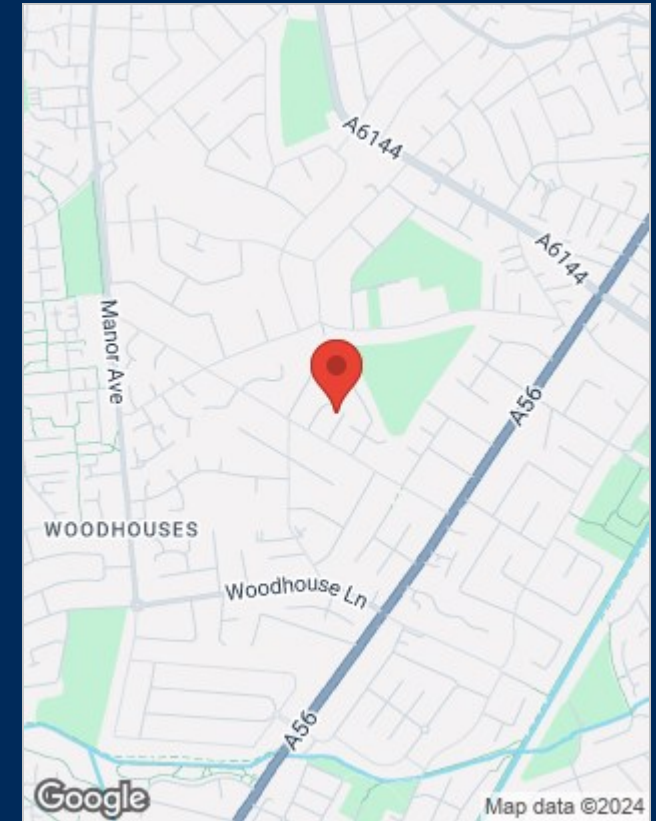




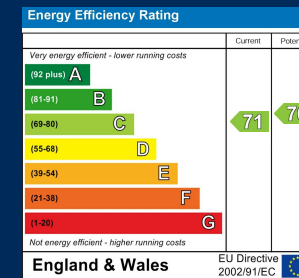
Floor Plans



Location Map



Energy Performance Graph



Viewing

Please contact our Sale Office on 0161 962 2828 if you wish to arrange a viewing appointment for this property or require further information.

The particulars are set out as a general outline only for the guidance of intended purchasers or lessees, and do not constitute, any part of a contract. Nothing in these particulars shall be deemed to be a statement that the property is in good structural condition or otherwise nor that any of the services, appliances, equipment or facilities are in good working order. Purchasers should satisfy themselves of this prior to purchasing.