



23 Kilvert Drive, Sale, M33 6PR

£2,300 Per Calendar Month

www.jordanfishwick.co.uk





Jordan fishwick

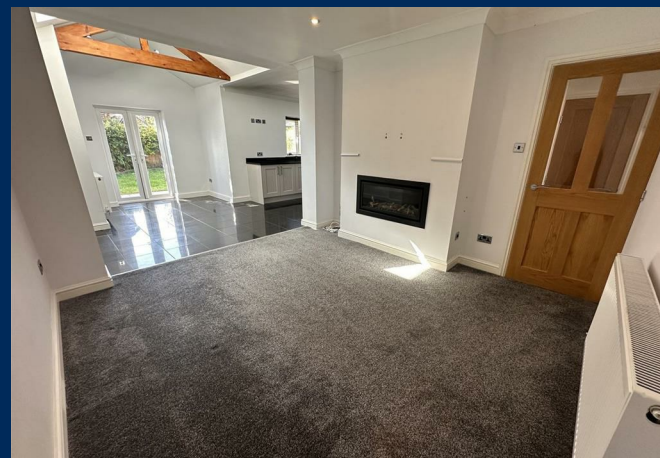
- Four Bedroom Semi-Detached
- Modern Open Plan Kitchen/Dining/Living Room
- Ensuite & Family Bathroom
- Enclosed Rear Garden
- EPC Rating C
- AVAILABLE NOW
- Utility Room & Downstairs WC
- Driveway Parking
- Council Tax Band D

AVAILABLE NOW! Immaculately presented four bedroom semi-detached family home. With over 1300 sqft of accommodation located on a popular residential road in Sale within proximity to Sale Town Centre and Ashton-on-Mersey Village.

The property briefly comprises: entrance hallway, downstairs WC, sitting room, lounge opening up to dining area with vaulted ceiling/doors onto the garden, open plan breakfast kitchen with granite worksurfaces and integrated appliances (fridge freezer, dishwasher, double oven, gas hob and wine cooler), utility room with integrated washing machine and tumble dryer. To the first floor there are four bedrooms with ensuite shower room to bedroom three and fitted family bathroom.

EPC Rating C. Council Tax Band D.

£2,300 Per Calendar Month





01619622828

Jordan fishwick

Sell Smarter

Why take a risk?



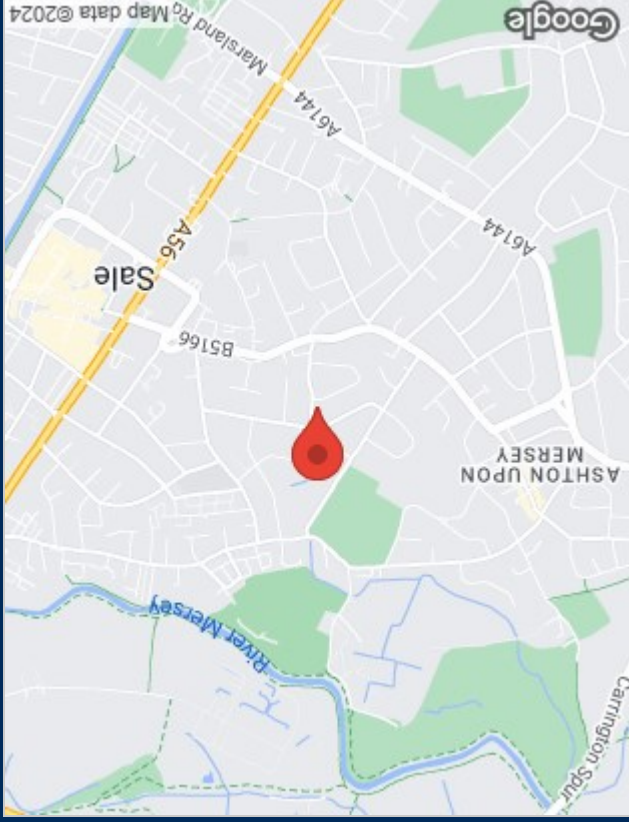


Floor Plans

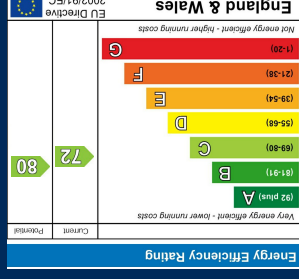


Viewing

Please contact our Sale Lettings Office on if you wish to arrange a viewing appointment for this property or require further information.



Energy Performance Graph



The particulars are set out as a general outline only for the guidance of intended purchasers or lessees, and do not constitute, any part of a contract. Nothing in these particulars shall be deemed to be a statement that the property is in good structural condition or otherwise nor that any of the services, appliances, equipment or facilities are in good working order. Purchasers should satisfy themselves of this prior to purchasing.