



WINDSOR COURT



Apt 14 Windsor Court, Ashton Lane, Sale, M33 6WF

* NO ONWARD CHAIN * This two bed, ground floor apartment is situated within an extremely desirable location, just a short stroll to Ashton on Mersey village and within convenient reach of Sale centre and SALE METROLINK. Comprising in brief: communal entrance hallway, private entrance hall with intercom system, kitchen, living/dining room, two DOUBLE bedrooms and a three piece bathroom suite. Combi boiler and gas central heating. Externally the development has parking and communal gardens to the borders. Call now to arrange your viewing. Council Tax Band B. EPC Rating C. Leasehold.

£170,000

Viewing arrangements

Viewing strictly by appointment through the agent

95-97 School Road, Sale, Cheshire, M33 7XA 0161 962 2828

Lease and Service Charge

LEASE 999 years from 2005
SERVICE CHARGE £1,684 PA
GROUND RENT £200 PA

Hallway

Laminate flooring.

Lounge

Carpeted flooring.

Kitchen

Kitchen with good range of wall and base units, integrated single oven, electric hob and extractor. Space and plumbing for washing machine and fridge freezer.

Bedroom One

Double bedroom, carpeted flooring.

Bedroom Two

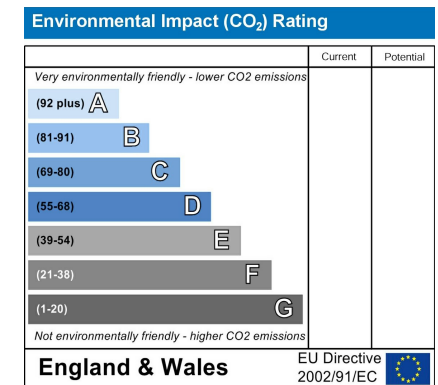
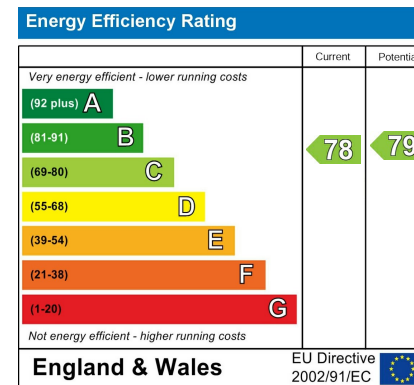
Double bedroom, carpeted flooring.

Bathroom

Three piece suite. WC, shower over bath tub and pedestal hand wash basin.

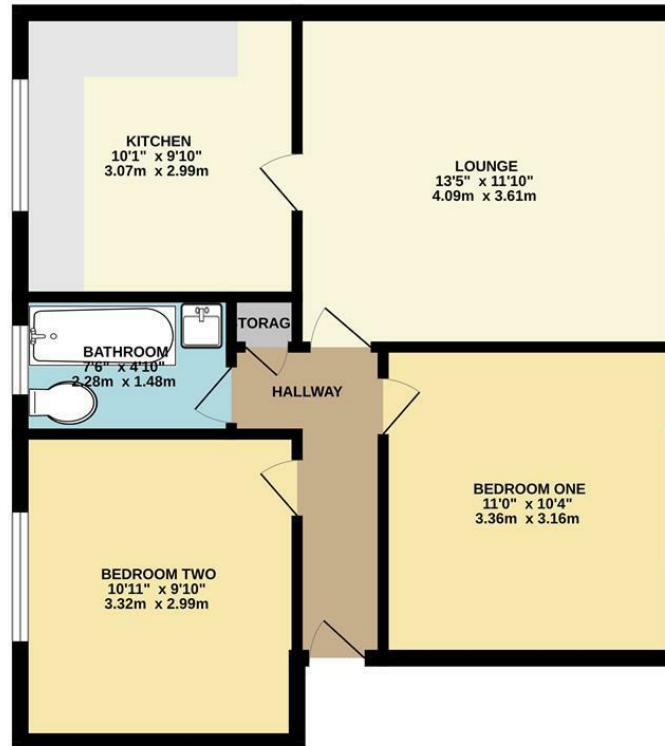
Externally

Off street parking to the rear.





GROUND FLOOR



Measurements are approximate. Not to scale. Illustrative purposes only.
Made with Metropix ©2024



These particulars are believed to be accurate but they are not guaranteed and do not form a contract. Neither Jordan Fishwick nor the vendor or lessor accept any responsibility in respect of these particulars, which are not intended to be statements or representations of fact and any intending purchaser or lessee must satisfy himself by inspection or otherwise as to the correctness of each of the statements contained in these particulars. Any floorplans on this brochure are for illustrative purposes only and are not necessarily to scale.

Offices at: Chorlton, Didsbury, Disley, Hale, Glossop, Macclesfield, Manchester Deansgate, Manchester Whitworth Street, New Mills, Sale, Wilmslow and Withington

95-97 School Road, Sale, Cheshire, M33 7XA

0161 962 2828

sale@jordanfishwick.co.uk
www.jordanfishwick.co.uk

