



6 Moorland Avenue, Sale, M33 3FH

£309,950

[www.jordanfishwick.co.uk](http://www.jordanfishwick.co.uk)









# Jordan fishwick

- Three Bedroom Semi Detached House
- Walking Distance To Sale Moor Village
- Benefitting From Electrical Upgrade
- No Chain
- EPC - E Rating
- Good Location Close To Sools And Amenities
- Private Sunny Gardens To The Rear
- In Need Of Modernisation
- Council Tax Band C
- Freehold

\* FREEHOLD\* A three bedroom period semi-detached in need of modernisation but with ample potential to create a lovely family home. Situated in an excellent location of Sale, close to transport links and a short walk to Sale Grammar School. The accommodation comprises: entrance hall, lounge, dining kitchen. To the first floor there are three bedrooms and a bathroom. Outside to the rear there is a fully enclosed, south facing garden. The property benefits from a recent electrical upgrade. No Chain. Council Tax Band C. EPC Rating E.

£309,950



Ground Floor  
Entrance Hall  
Lounge  
Dining Kitchen  
First Floor  
Landing  
Bedroom One  
Bedroom Two  
Bedroom Three  
Bathroom  
Outside





01619622828

*Jordan fishwick*

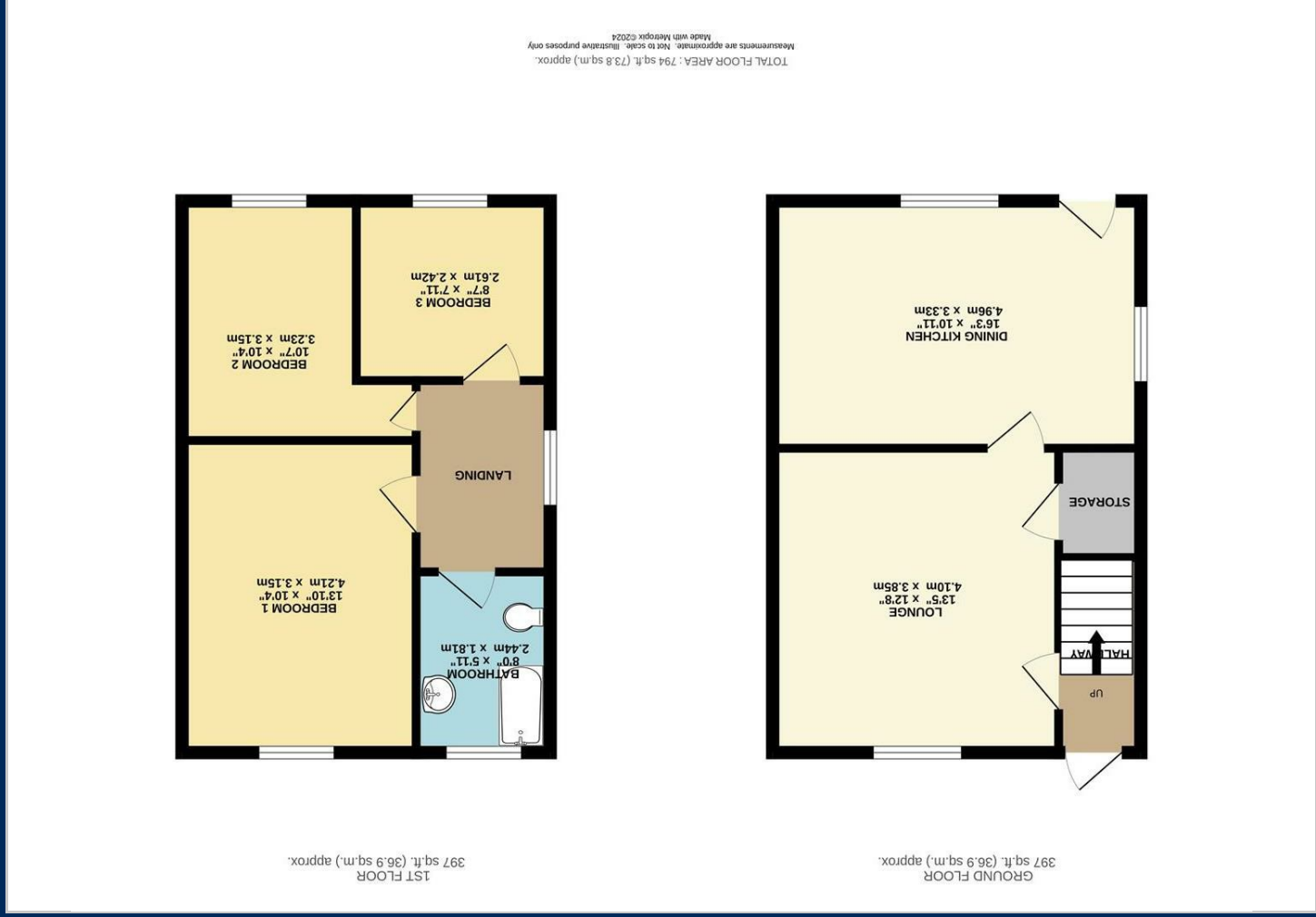
*Why take a risk?*  
*Sell Smarter*







## Floor Plans

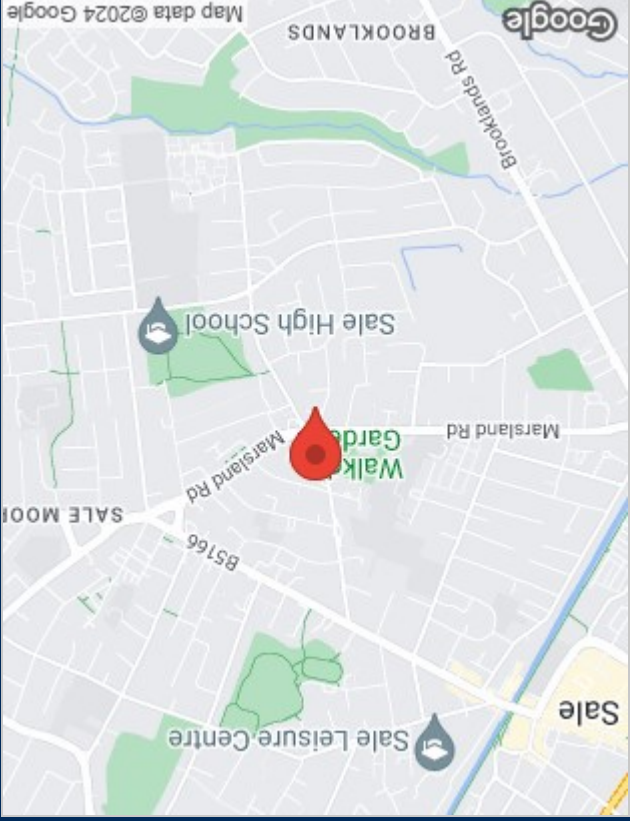


## Viewing

Please contact our Sale Office on 0161 962 2828 if you wish to arrange a viewing appointment for this property or require further information.

The particulars are set out as a general outline only for the guidance of intended purchasers or lessees, and do not constitute, any part of a contract. Nothing in these particulars shall be deemed to be a statement that the property is in good structural condition or otherwise nor that any of the services, appliances, equipment or facilities are in good working order. Purchasers should satisfy themselves prior to purchasing.

## Location Map



## Energy Performance Graph

