



Jordan fishwick

Kinderlee Way
Glossop



Kinderlee Way Glossop SK13 5DB

£925 Per Calendar Month



The Property

Located at the front of the newer build South mill, forming part of the Kinderlee Mill development in popular Chisworth, one of the larger apartments, with almost 1107 sqft of living space and which is offered for sale with No Onward Chain. Hidden away and nestling in wooded surroundings, this spacious first floor apartment includes an entrance hallway leading to the generous open plan fitted kitchen and lounge which has a Juliet Balcony, two double bedrooms, one with an en-suite shower and the main shower room. Electric central heating, double glazing and allocated parking space at the front of the building. Contemporary living within this magnificent rural setting surrounded by open countryside. Energy Rating B

Directions

- Available From 24th November 2024
- Spacious First Floor Apartment
- Two Bedrooms & En-Suite
- Open Plan Living Room & Kitchen with Juliet Balcony
- EPC B & Council Tax B
- Allocated Parking Space & Communal Gardens
- Kinderlee Mill Development

Postcode - SK13 5DB

EPC Rating - B

Floor Area - sq ft

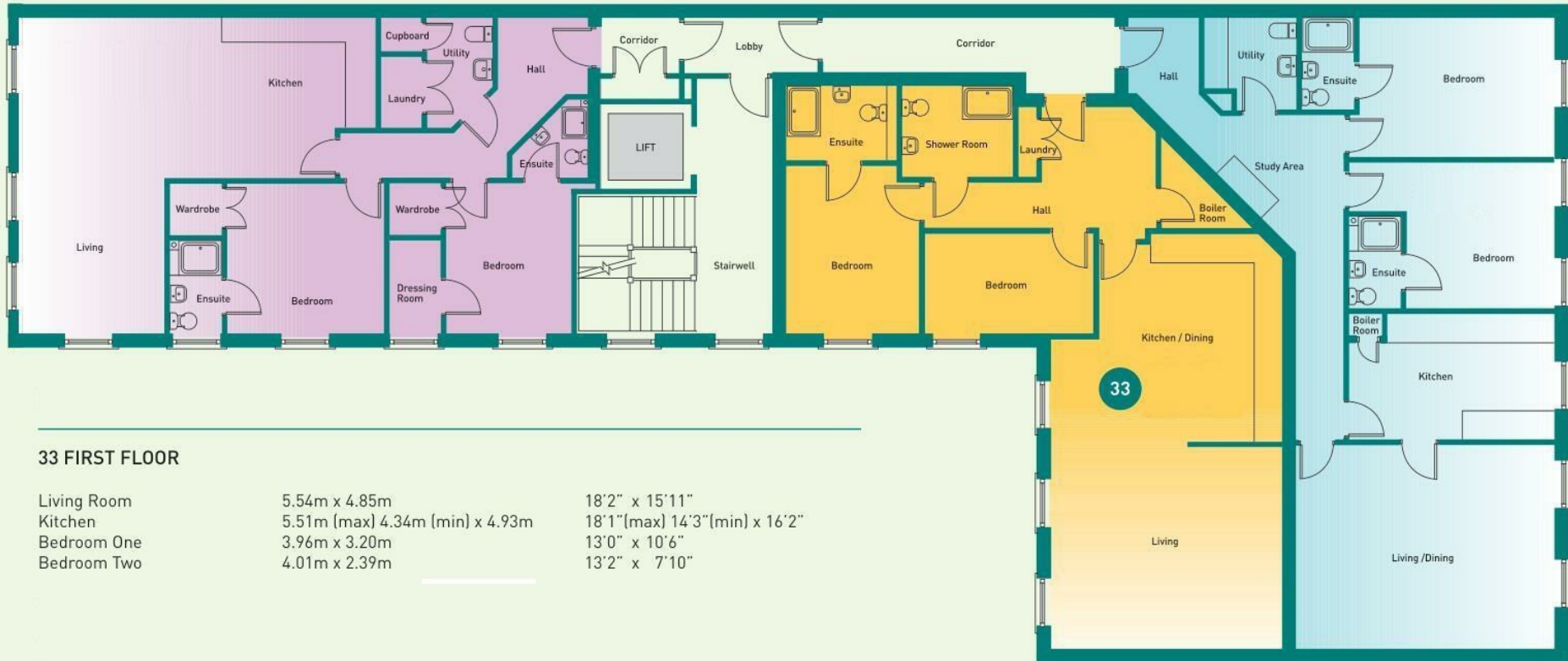
Local Authority - High Peak Borough Council

Council Tax - B



first floor

Kinderlee Mill South



33 FIRST FLOOR

Living Room	5.54m x 4.85m	18'2" x 15'11"
Kitchen	5.51m (max) 4.34m (min) x 4.93m	18'1"(max) 14'3"(min) x 16'2"
Bedroom One	3.96m x 3.20m	13'0" x 10'6"
Bedroom Two	4.01m x 2.39m	13'2" x 7'10"



These particulars are believed to be accurate but they are not guaranteed and do not form a contract. Neither Jordan Fishwick nor the vendor or lessor accept any responsibility in respect of these particulars, which are not intended to be statements or representations of fact and any intending purchaser or lessee must satisfy himself by inspection or otherwise as to the correctness of each of the statements contained in these particulars. Any floorplans on this brochure are for illustrative purposes only and are not necessarily to scale.

Offices at: Offices at Chorlton, Didsbury, Disley, Hale, Glossop, Macclesfield, Manchester Deansgate, Manchester Whitworth Street, New Mills, Sale, Wilmslow and Withington

44 High Street West, Glossop, Derbyshire, SK13 8BH

01457 858 888

glossop@jordanfishwick.co.uk
www.jordanfishwick.co.uk