



*jordan fishwick*

# 8 Chew Wood, Chisworth, Glossop, Derbyshire, SK13 5RR

**\*\* SEE OUR VIDEO TOUR \*\*** A charming stone built weavers cottage, bursting with character and set back from the road within a wooded, back water location, surrounded by open farmland. This immaculately presented cottage has a wealth of period features and offers extended living space arranged over three floors, including on the ground floor, a 20ft through lounge with stone fireplace and wood burning stove, an 18ft dining kitchen with patio doors, a first floor bedroom and a refitted bathroom, whilst on the top floor there is a second bedroom and shower room. Chew Wood is located in the heart of sought after Chisworth, which itself is equidistant to Glossop town centre and Marple Bridge, which, together with nearby Broadbottom, all offer a speedy railway link to Manchester City Centre. Energy Rating D

## £345,000

### Viewing arrangements

Viewing strictly by appointment through the agent

44 High Street West, Glossop, Derbyshire, SK13 8BH 01457 858888

### Directions

From our office on High Street West continue in a Westerly direction through the traffic lights, two roundabouts and along Dinting Vale. At the next set of traffic lights turn left onto Glossop Road, continue through Gamesley and on into Charlesworth where the road changes to Marple Road. Proceed through Chisworth and down the dip at Chew Wood where the property stands on the right hand side.

### GROUND FLOOR

#### Lounge

20'6 x 14'3 (max)

Oak stable type front door, pvc double glazed front sash window, central heating radiator, stone fireplace with Hunter wood burning stove, spindled stairs leading to the first floor, pvc double glazed rear window, understairs cupboard with electric meter and latch door through to:

#### Dining Kitchen

18'1 x 7'1

A range of fitted kitchen units including base cupboards and drawers, plumbing for an automatic washing machine, Work tops over with an inset white sink and mixer tap, split-level electric double oven and gas hob, filter hood and matching wall cupboards, pvc double glazed front and rear windows, tiled floor, central heating radiator and pvc double glazed patio doors.

### FIRST FLOOR

#### Landing

With spindled return staircase leading to the second floor, book shelf, pvc double glazed rear sash window and latch doors to;

#### Bedroom One

14'3 (max) x 8'9 plus 8'0 (max) x 4'3

L-shaped with two pvc double glazed front windows and two column central heating radiator.

## Bathroom

A refitted white suite including a panelled bath with mixer tap, wash hand basin with mixer tap and vanity unit, low level wc, three column central heating radiator and pvc double glazed rear window.

## SECOND FLOOR

### Landing

Pvc front sash window, central heating radiator and latch doors to:

### Bedroom Two

11'6 x 9'4

Two pvc double glazed sash windows and central heating radiator.

### Shower Room

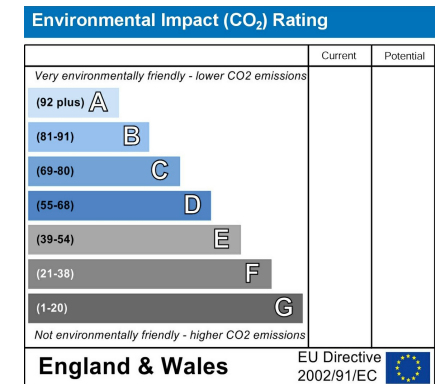
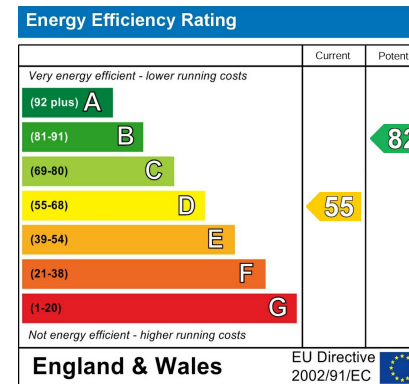
A corner shower cubicle, wash hand basin with mixer tap and vanity unit, close coupled wc, chrome finish towel radiator and cupboard housing the Ideal gas fired combination boiler.

## OUTSIDE

### Garden Patio Rear Yard

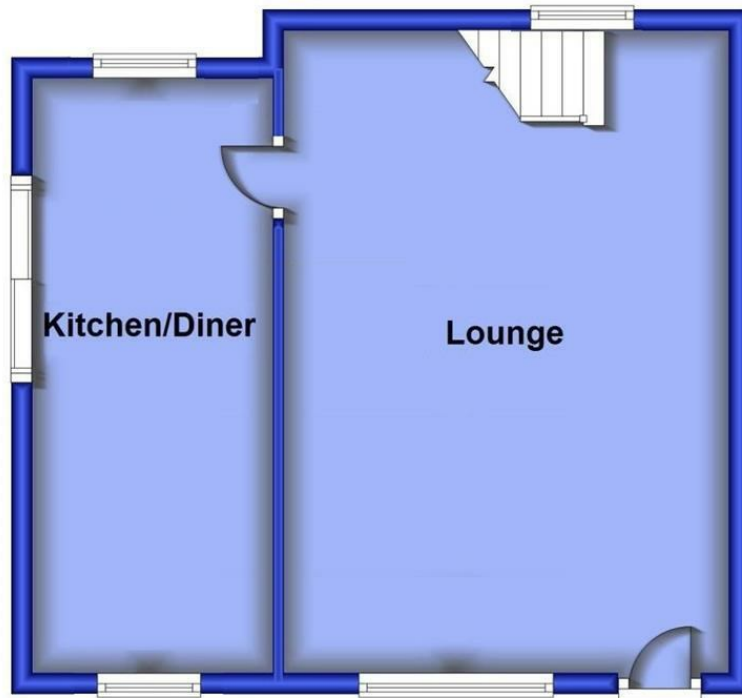
A stepped pathway leads down from the road through a gate and to the front of the property where there is a flagged patio area extending around to the side.

Our ref:Cms/cms/0905/24

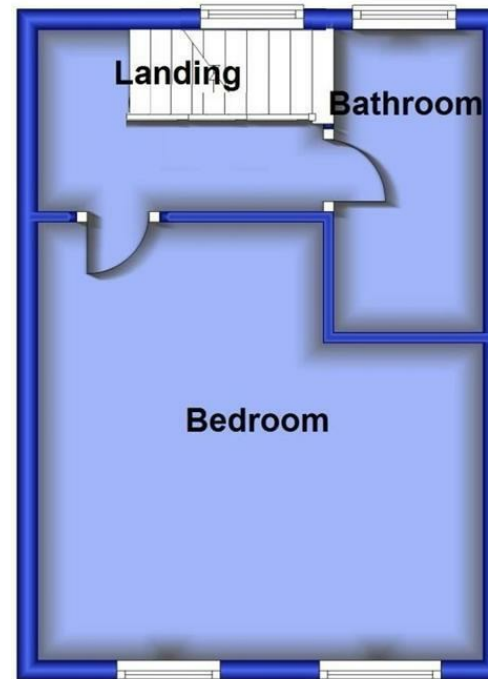




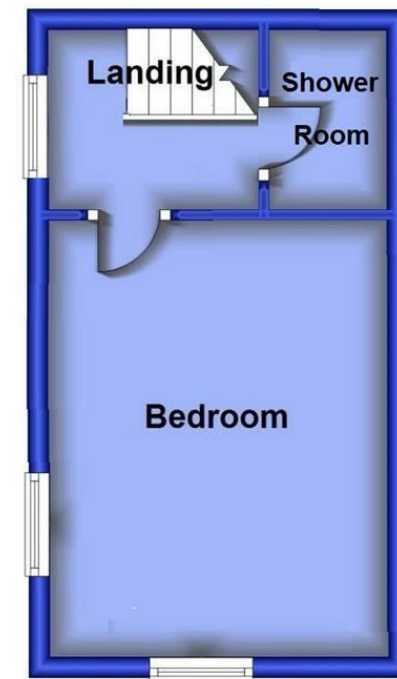
**Ground Floor**



**First Floor**



**Second Floor**



These particulars are believed to be accurate but they are not guaranteed and do not form a contract. Neither Jordan Fishwick nor the vendor or lessor accept any responsibility in respect of these particulars, which are not intended to be statements or representations of fact and any intending purchaser or lessee must satisfy himself by inspection or otherwise as to the correctness of each of the statements contained in these particulars. Any floorplans on this brochure are for illustrative purposes only and are not necessarily to scale.

Offices at: Chorlton, Didsbury, Disley, Hale, Glossop, Macclesfield, Manchester Deansgate, Manchester Whitworth Street, New Mills, Sale, Wilmslow and Withington

44 High Street West, Glossop, Derbyshire, SK13 8BH

**01457 858888**

[glossop@jordanfishwick.co.uk](mailto:glossop@jordanfishwick.co.uk)  
[www.jordanfishwick.co.uk](http://www.jordanfishwick.co.uk)

