

THE OLD  
CHAPEL HOUSE

THE OLD  
CHAPEL HOUSE



# 5 The Old Chapel House, Shrewsbury Street, Glossop, Derbyshire, SK13 7BX

**\*\* SEE OUR VIDEO TOUR \*\*** A spacious town centre duplex apartment, part of a converted Chapel and School House within the Wren Nest Conservation Area and only a short walk away from the shops and railway station. The living space, which is arranged over two floors, briefly comprising a communal entrance hallway with stairs to the first floor, a private hallway, an open plan 21ft living room with feature windows and fitted kitchen with integrated appliances, a bathroom with shower and two staircases lead to the two bedrooms. Electric central heating and off road parking. Contemporary living within a historical building of interest. Energy Rating D

## £169,950

### Viewing arrangements

Viewing strictly by appointment through the agent

44 High Street West, Glossop, Derbyshire, SK13 8BH 01457 858888

### Directions

From our office on High Street West proceed in a westerly direction through the first set of traffic lights and turn next right onto Shrewsbury Street. Proceed up the hill and The Old School House can be found on the left hand side.

### GROUND FLOOR

#### Main Entrance

Main entrance doors, meter room and stairs to:

### FIRST FLOOR

#### Private Entrance Hall

Entry phone, central heating radiator, spindled turning stairs leading to Bedroom two, understairs cupboard, double wardrobe and opening through to:

### Open Plan Living Room & Kitchen

21'0" x 13'6" (less stairs)

Three large windows, central heating radiator, spindled stairs leading to bedroom one, a range of fitted kitchen units including base cupboards and drawers, integrated slimline dishwasher, integrated washer dryer, work tops over with an inset single drainer stainless sink unit with mixer tap, split-level electric oven, microwave and ceramic hob, filter hood and matching wall cupboards with pelmet lighting, kickboard heater.

### Bathroom

A white three piece suite including a panelled whirlpool bath with mixer tap and shower over, half pedestal wash hand

basin and low level wc, shaver point and mirrors, chrome finish towel radiator.

## UPPER FIRST FLOOR

### Bedroom One

9'5" x 8'9" plus 6'8" x 5'10"

Spindled balustrade overlooking the living room, central heating radiator, three wall light points, fitted dressing table, wardrobes, bedhead and bedside cabinets, Velux double glazed skylight window.

### Bedroom Two

10'3" x 9'3" (max meas)

Spindled balustrade overlooking the hallway, central heating radiator, Velux double glazed skylight window, boiler cupboard, three wall light points and fire escape door.

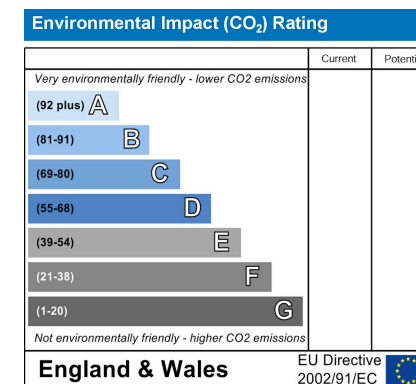
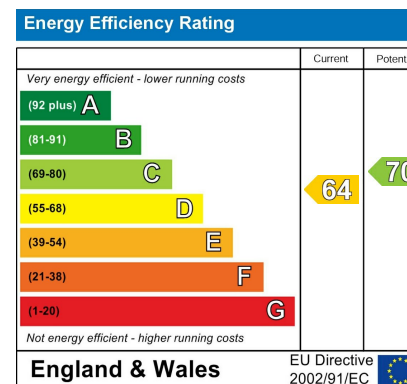
## OUTSIDE

### Communal Gardens & Parking

### Service Charge

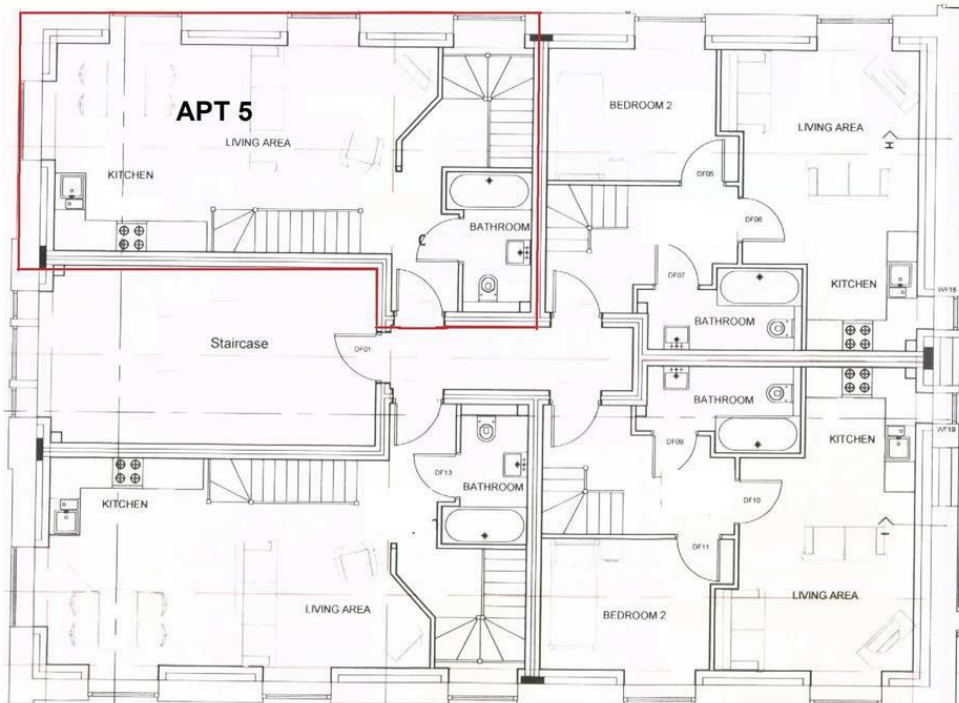
Details available on request

Our ref: Cms/cms/0215/24

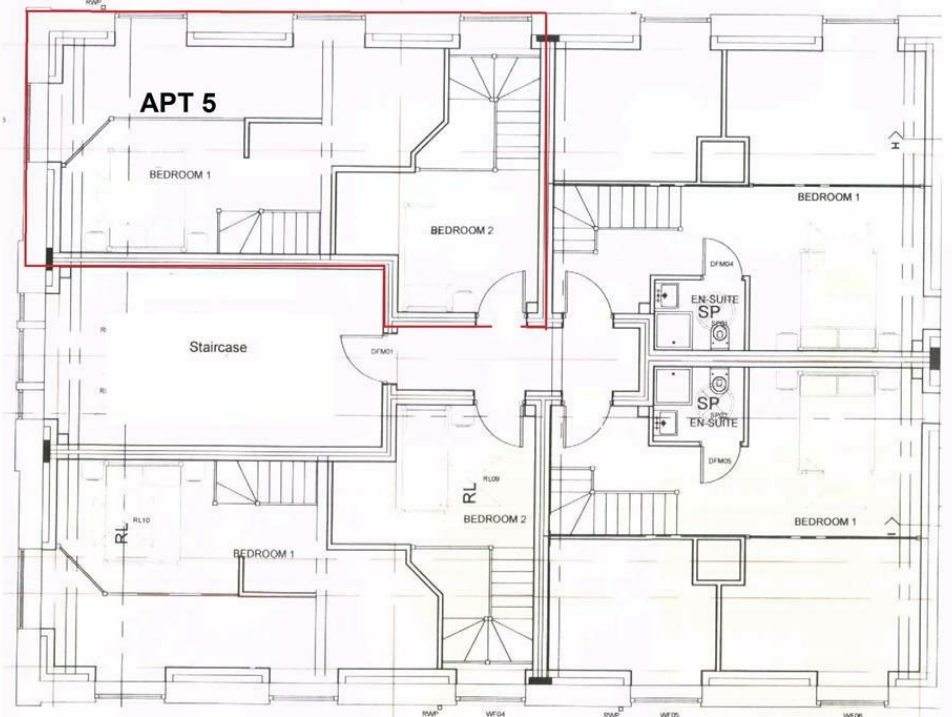




## FIRST FLOOR



## UPPER FIRST FLOOR



These particulars are believed to be accurate but they are not guaranteed and do not form a contract. Neither Jordan Fishwick nor the vendor or lessor accept any responsibility in respect of these particulars, which are not intended to be statements or representations of fact and any intending purchaser or lessee must satisfy himself by inspection or otherwise as to the correctness of each of the statements contained in these particulars. Any floorplans on this brochure are for illustrative purposes only and are not necessarily to scale.

Offices at: Chorlton, Didsbury, Disley, Hale, Glossop, Macclesfield, Manchester Deansgate, Manchester Whitworth Street, New Mills, Sale, Wilmslow and Withington

44 High Street West, Glossop, Derbyshire, SK13 8BH

01457 858888

glossop@jordanfishwick.co.uk  
www.jordanfishwick.co.uk

