



50 Kinderlee Mill North Kinderlee Way, Chisworth, Glossop, Derbyshire, SK13 5DB

**** SEE OUR VIDEO TOUR **** Forming part of a now well established mill conversion, nestling within wooded surroundings, this fabulous duplex apartment is guaranteed to impress! Located on the top two floors of the original mill, the apartment has the benefit of two roof terraces and is offered for sale with No Onward Chain. Briefly comprising an open plan living room with vaulted ceiling and patio doors, a modern kitchen with appliances and on the lower floor there are two double bedrooms, a bathroom, which doubles up as an en-suite and a separate wc. Outside there are communal grounds and there is an allocated parking space. Contemporary living within this magnificent rural setting surrounded by open countryside. Energy Rating

£215,000

Viewing arrangements

Viewing strictly by appointment through the agent

44 High Street West, Glossop, Derbyshire, SK13 8BH 01457 858888

Directions

From our office on High Street West continue in a Westerly direction through the traffic lights, two roundabouts and along Dinting Vale. At the next set of traffic lights turn left onto Glossop Road, continue through Gamesley and on into Charlesworth where the road changes to Marple Road. Proceed down the hill and into Chisworth eventually turning right opposite The Hunters Inn and continue down the hill to the mill.

GROUND FLOOR

Communal Entrance

Communal entrance with stairs and lift to all floors.

THIRD FLOOR

Hallway

Entrance door, central heating radiator, understairs cupboard and turning stairs leading upstairs to the fourth floor, doors leading off to:

Bedroom One

15'1" x 9'1" (plus recess)

Two double glazed front windows, two central heating radiators and connecting door to the bathroom.

Bedroom Two

13'3" x 9'0"

Double glazed rear window and central heating radiator.

Bathroom/En-Suite

A white suite including a panelled bath with mixer tap, shower over and shower screen, pedestal wash hand basin with mixer tap and close coupled wc, chrome finish towel radiator.

Wc

A white close coupled wc and wash hand basin, chrome finish towel radiator.

FOURTH FLOOR

Open Plan Living Room

25'4" x 15'1" (less stairs)

Entrance door, two central heating radiators, double glazed patio doors leading out to bot the front and rear roof terraces, tv aerial point, storage cupboard and opening to:

Kitchen Area

9'11" x 6'3"

A range of fitted kitchen units including base cupboards and drawers, integrated washing machine, dishwasher, fridge and freezer, built-in electric oven, work tops over iwth an inset single drainer one and a half bowl stainless steel sink unit and mixer tap, ceramic hob with filter hood over, matching wall cupboards with under unit lighting, integrated microwave, eaves storage cupboard and Velux double glazed skylight window.

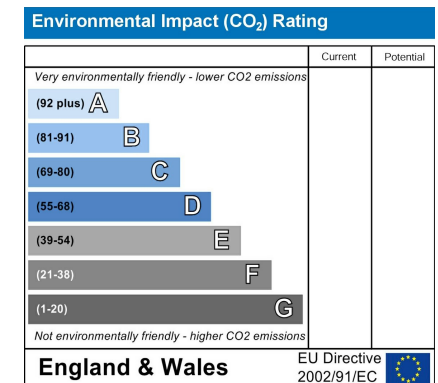
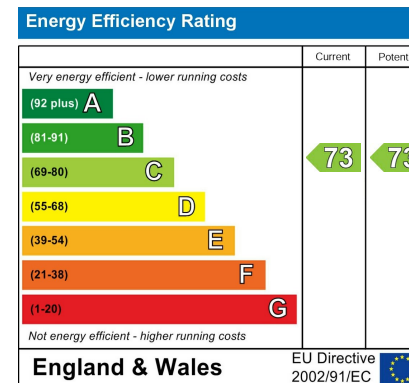
OUTSIDE

Front & Rear Roof Terraces

Service Charge

A service charge applies and details are available on request.

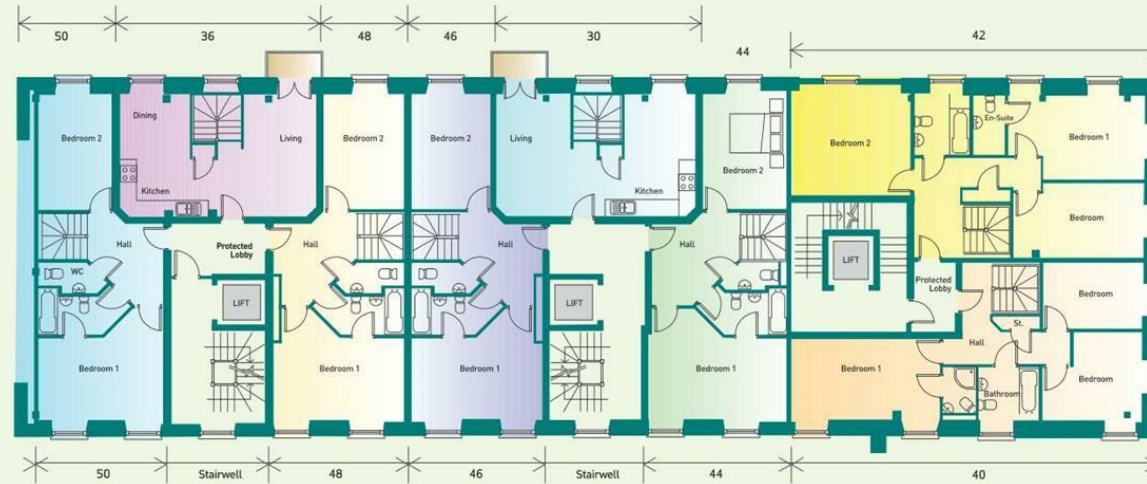
Our Ref: Cms/cms/0920/23





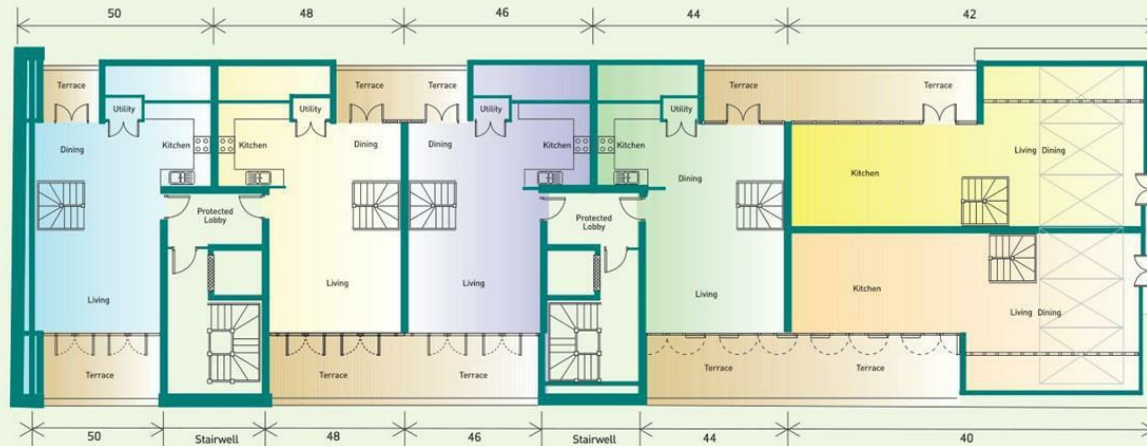
third floor

Kinderlee Mill North



fourth floor

Kinderlee Mill North



These particulars are believed to be accurate but they are not guaranteed and do not form a contract. Neither Jordan Fishwick nor the vendor or lessor accept any responsibility in respect of these particulars, which are not intended to be statements or representations of fact and any intending purchaser or lessee must satisfy himself by inspection or otherwise as to the correctness of each of the statements contained in these particulars. Any floorplans on this brochure are for illustrative purposes only and are not necessarily to scale.

Offices at: Chorlton, Didsbury, Disley, Hale, Glossop, Macclesfield, Manchester Deansgate, Manchester Whitworth Street, New Mills, Sale, Wilmslow and Withington

44 High Street West, Glossop, Derbyshire, SK13 8BH

01457 858888

glossop@jordanfishwick.co.uk
www.jordanfishwick.co.uk

