



69 King Street, Glossop, Derbyshire, SK13 8LY

The end one, of a row of three bungalows, only of interest to the over 55's, enjoying a cul-de-sac location within half a mile of Glossop town centre and railway station. With pvc double glazing, gas central heating and comprising a front living room, recently refitted kitchen with appliances, inner hallway, two bedrooms and a refitted bathroom with shower. Enclosed rear garden area and front parking space. No Onward Chain. Energy Rating C

£170,000

Viewing arrangements

Viewing strictly by appointment through the agent

44 High Street West, Glossop, Derbyshire, SK13 8BH 01457 858888

Directions

From our office on High Street West proceed in an Easterly direction, at the central traffic lights at Norfolk Square turn right onto Victoria Street and proceed up the hill. Turn third left onto Derby Street then first right onto King Street and the property can be found on the left hand side.

GROUND FLOOR

Entrance Vestibule

Pvc double glazed front door and door leading through to:

Living Room

15'1" x 10'3"

Pvc double glazed front window, central heating radiator and fireplace, door to:

Kitchen

7'11" x 7'4"

Only recently refitted with only the tiling to finish, comprising a range of white shaker style units including base cupboards and drawers, wine rack, pan drawers, plumbing for an automatic washing machine, Quartz effect work tops over with an inset single drainer stainless steel sink unit with mixer tap, Split-level electric oven, microwave and ceramic hob, filter hood, matching wall cupboards, Worcester gas fired central heating boiler, pvc double glazed rear window and external stable type door.

Inner Hallway

Airing cupboard and doors to:

Bedroom One

12'2" x 8'0"

Pvc double glazed rear window, central heating radiator, fitted wardrobes and dressing table.

Bedroom Two

9'3" x 6'8"

Pvc double glazed front window and central heating radiator.

Bathroom

A refitted white suite including a panelled bath with mixer tap, electric shower over and shower screen, wash hand basin with mixer tap and vanity unit, low level wc, chrome finish towel radiator and pvc double glazed window.

OUTSIDE

Gardens

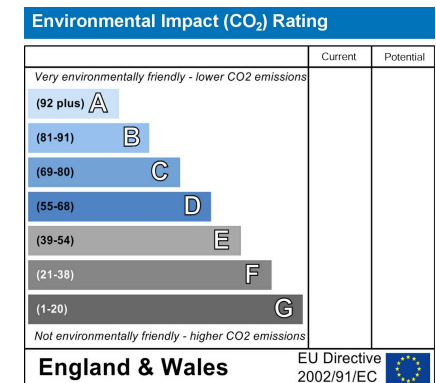
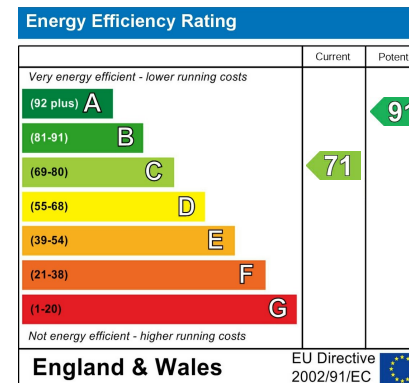
The bungalow has a front driveway and an enclosed low maintenance flagged rear garden with raised flower beds and potting shed.

Service Charge

There is a monthly service charge payable to Guinness Northern Counties Housing Association which includes Building Insurance, Gas Check, Window Cleaning, External Painting, Fence Repair, Maintenance of Front and Communal Garden areas.

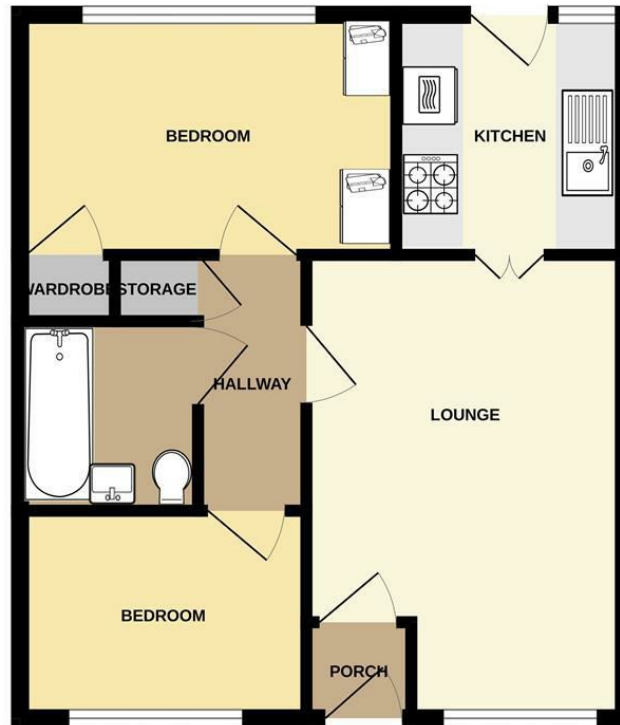
Further details are available on request.

Our Ref:Cms/cms/0703/23





GROUND FLOOR



Whilst every attempt has been made to ensure the accuracy of the floorplan contained here, measurements of doors, windows, rooms and any other items are approximate and no responsibility is taken for any error, omission or mis-statement. This plan is for illustrative purposes only and should be used as such by any prospective purchaser. The services, systems and appliances shown have not been tested and no guarantee as to their operability or efficiency can be given.
Made with Metropix ©2023



These particulars are believed to be accurate but they are not guaranteed and do not form a contract. Neither Jordan Fishwick nor the vendor or lessor accept any responsibility in respect of these particulars, which are not intended to be statements or representations of fact and any intending purchaser or lessee must satisfy himself by inspection or otherwise as to the correctness of each of the statements contained in these particulars. Any floorplans on this brochure are for illustrative purposes only and are not necessarily to scale.

Offices at: Chorlton, Didsbury, Disley, Hale, Glossop, Macclesfield, Manchester Deansgate, Manchester Whitworth Street, New Mills, Sale, Wilmslow and Withington

44 High Street West, Glossop, Derbyshire, SK13 8BH

01457 858888

glossop@jordanfishwick.co.uk
www.jordanfishwick.co.uk

