



13



Jordan fishwick

Paradise Court, 13 Crossall Street, Macclesfield, Cheshire, SK11 6QF

An Inspired THREE BEDROOM TOWN HOUSE complete with QUALITY KITCHEN, STYLISH BATHROOM AND EN-SUITE as well as SOUTHERLEY FACING GARDEN & PRIVATE PARKING. Conveniently located within WALKING DISTANCE OF THE TOWN CENTRE and its excellent public transport links. Appealing to a variety of buyers including young families, upsizing/downsizing, as well as those looking for an investment. Forming part of a select and highly desirable development, this delightful family home is beautifully appointed throughout and in brief; reception hallway, downstairs W.C. stylish fitted kitchen with a range of integrated appliances. The elegant living room enjoys sliding doors opening to the delightful rear garden. To the first floor are two bedrooms and a stylish bathroom with Grohe fittings. The second floor offers another spacious double bedroom with a stylish en-suite. Externally, there is a low maintenance rear garden, fenced and enclosed with gated access to the rear. The property comes with TWO allocated parking spaces.

£320,000

Viewing arrangements

Viewing strictly by appointment through the agent

01625 434000

Location

Set in Cheshire's plains, on the fringe of the Peak District National Park, Macclesfield combines the old with the new. Originally a medieval town, Macclesfield became the country's 'Silk' capital in the 1750's, whilst it still retains that heritage, in recent years it has grown to become a thriving business centre. Macclesfield is a modern shopping centre with a range of leisure facilities to suit most tastes. There is a popular monthly Treacle Market which is a bustling Arts, Antiques, Crafts, Food and Drink Market, held on the cobbles of the town centre with around 140 stalls of exceptional food and drink, unique crafts and vintage and information from the Macclesfield community. There are many independent and state primary and secondary schools. The access points of the North West Motorway network system, Manchester International Airport and some of Cheshire's finest countryside are close at hand. Intercity rail links to London Euston and Manchester Piccadilly can be found at Macclesfield and Wilmslow railway stations as well as commuter rail links to the local business centres.

Directions

Taking the exit off the Churchill Way roundabout in front of Halfords, into Union Street and then bear left into Union Street where the development can be found on the corner of Statham Street/Paradise Street and Crossall Street.

Entrance Hall

With stairs leading to the first floor landing. Radiator. Recessed ceiling spotlights. Downstairs W.C. Door through to the living/dining room/kitchen.

Downstairs W.C.

Fitted with a low level W.C with concealed cistern and vanity wash basin. Chrome ladder style radiator. Part tiled walls. Recessed ceiling spotlight. Double glazed window to the front aspect.

Open Plan Living room to Kitchen

Fitted Kitchen

11'10" x 6'10"

Beautifully fitted kitchen with a range of high gloss handleless base units with work surfaces over and matching wall mounted cupboards. Integrated appliances include a fridge, freezer and dishwasher all with matching cupboard fronts. Bosch four ring electric hob with extractor hood over. Bosch built in double oven. Recessed ceiling spotlights. Double glazed window to the front aspect. laminate floor. Open to the Living dining room.

Living Room

14'2" x 14'0"

Spacious reception room with sliding patio doors open to the rear garden. Useful understairs storage cupboard. Recessed ceiling spotlights. Radiator.

Stairs to First Floor Landing

Recessed ceiling spotlights. Radiator.

Bedroom Two

14'0" x 10'0"

Double bedroom with two double glazed window to the rear aspect. Radiator.

Bedroom Three (L-Shape)

14'0 x 9'0 max

Excellent size third bedroom with two double glazed windows to the front aspect. Radiator.

Bathroom

Contemporary fitted bathroom suite incorporating a tiled panelled bath with shower fittings over and screen to the side, low level W.C with concealed cistern and vanity wash basin. Tiled wall and floor. Recessed ceiling spotlights. Double glazed window to the side aspect. Chrome ladder style radiator.

Stairs To Second Floor

Recessed ceiling spotlights.

Master Bedroom

20'5" x 9'8" reducing to 6'10"

Generous size, dual aspect, master bedroom with ample space for a king size bed and wardrobes. Double glazed windows to both the front and rear aspects. Access to the loft space. Over stairs storage cupboard. Recessed ceiling spotlights. Two radiators.

En-Suite

Contemporary en-suite incorporating a low profile shower tray with modern glazed enclosure, low level W.C with concealed cistern and vanity wash basin. Tiled walls and floor. Recessed ceiling spotlights. Chrome ladder style radiator. Double glazed window to the rear aspect.

Outside

Garden

Low maintenance rear garden, fenced and enclosed with gated access to the rear.

Private Parking for Two vehicles

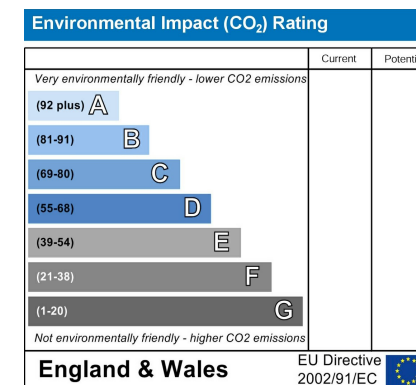
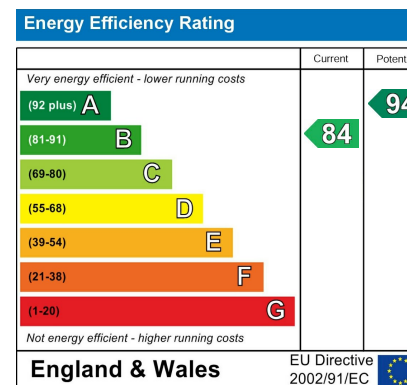
The property comes with TWO allocated parking spaces.

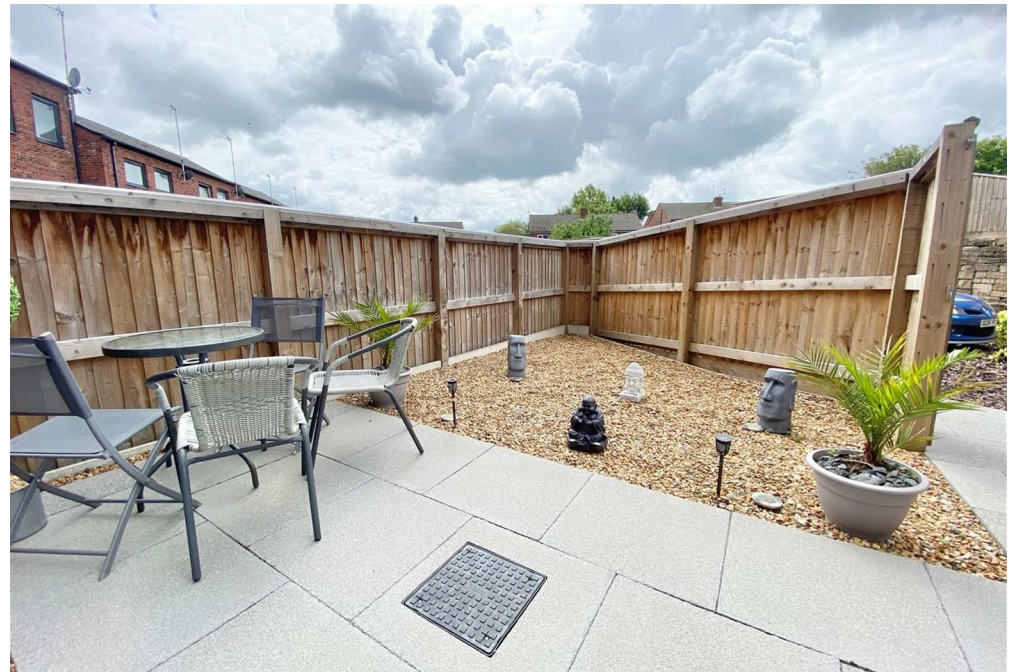
Management Company

We are advised by the vendor that the property is Freehold.

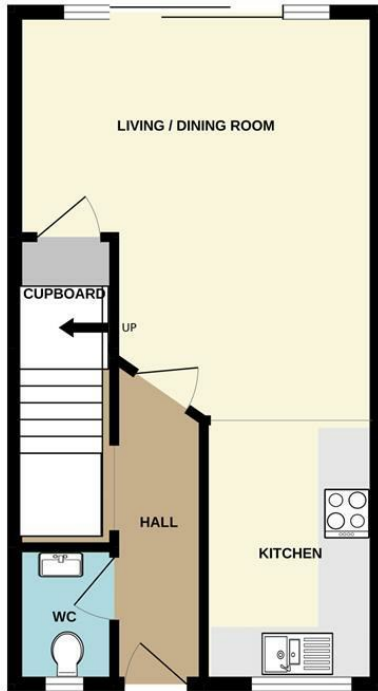
Council tax band C.

We would advise any prospective buyer to confirm these details with their legal representative.

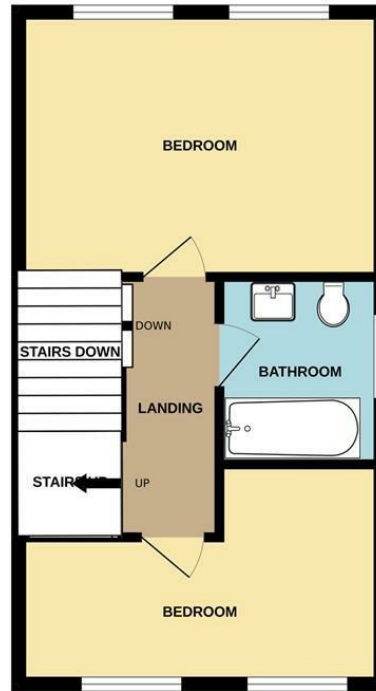




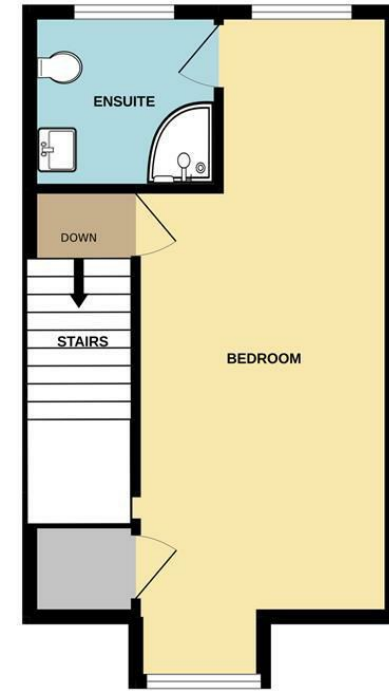
GROUND FLOOR



1ST FLOOR



2ND FLOOR



Measurements are approximate. Not to scale. Illustrative purposes only
 Made with Metropix ©2022



These particulars are believed to be accurate but they are not guaranteed and do not form a contract. Neither Jordan Fishwick nor the vendor or lessor accept any responsibility in respect of these particulars, which are not intended to be statements or representations of fact and any intending purchaser or lessee must satisfy himself by inspection or otherwise as to the correctness of each of the statements contained in these particulars. Any floorplans on this brochure are for illustrative purposes only and are not necessarily to scale.

Offices at: Chorlton, Didsbury, Disley, Hale, Glossop, Macclesfield, Manchester Deansgate, Manchester Whitworth Street, New Mills, Sale, Wilmslow and Withington

01625 434000

macclesfield@jordanfishwick.co.uk
 www.jordanfishwick.co.uk

