



jordanfishwick

Patrons Drive

£1,100 PCM



Patrons Drive, Cheshire, CW11 3AT

£1,100 PCM

VIEWING ESSENTIAL TO APPRECIATE IMMACULATE modern three-bedroom property located only a short drive from Sandbach town centre and the motorway network.

AVAILABLE MID MARCH and PART FURNISHED this attractive family home offers well thought out spacious accommodation on an extremely popular development.

Entrance hall, lounge, dining family kitchen with gas hob and electric oven, washing machine, tumble dryer, dishwasher and fridge freezer, downstairs cloakroom.

To the first floor three well-proportioned bedrooms, two with fitted wardrobes and bathroom with shower over bath. Sunny fully enclosed rear garden with decked area and storage.

Allocated parking for two cars.

Contact Macclesfield 01625 502222 £1100.00pcm

COUNCIL TAX C

EPC C



- THREE BEDROOMS
- TWO BATHROOMS
- EXTREMELY POPULAR LOCATION
- SUNNY REAR GARDEN
- OFF ROAD PARKING
- COUNCIL TAX C
- EPC C

Postcode - CW11 3AT

EPC Rating - C

Floor Area - sq ft

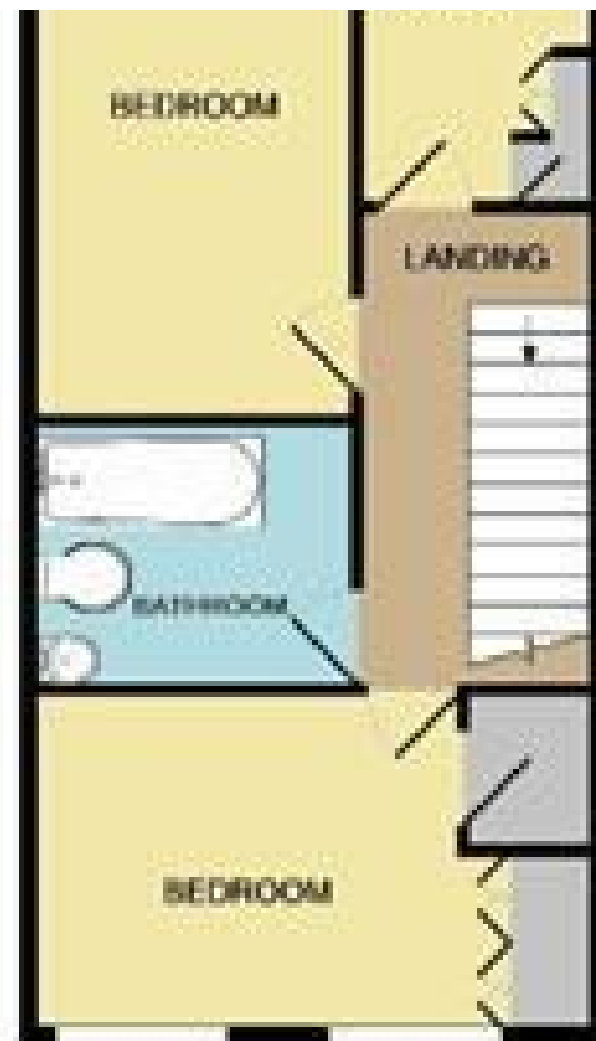
Local Authority - Crewe

Council Tax - C





GROUND FLOOR



1ST FLOOR



These particulars are believed to be accurate but they are not guaranteed and do not form a contract. Neither Jordan Fishwick nor the vendor or lessor accept any responsibility in respect of these particulars, which are not intended to be statements or representations of fact and any intending purchaser or lessee must satisfy himself by inspection or otherwise as to the correctness of each of the statements contained in these particulars. Any floorplans on this brochure are for illustrative purposes only and are not necessarily to scale.

Offices at: Offices at Chorlton, Didsbury, Disley, Hale, Glossop, Macclesfield, Manchester Deansgate, Manchester Whitworth Street, New Mills, Sale, Wilmslow and Withington

01625 536300