



**jordanfishwick**

34 CORONATION STREET MACCLESFIELD SK11 7PQ  
PCM £1,300 PCM



34 CORONATION STREET MACCLESFIELD SK11 7PQ

AVAILABLE LATE AUGUST PART FURNISHED - VIEWING RECOMMENDED

Modern and attractive delightful three-bedroom end of terrace located within easy walking distance of Macclesfield town centre and the train station.

This property comprises of a good sized lounge through diner with feature electric fire, and understairs storage, a modern kitchen with electric hob and oven fridge freezer and washing machine.

To the first floor main bedroom with fitted wardrobes and two further small double bedrooms and newly fitted bathroom with shower over bath. To the rear there is a private fully enclosed courtyard garden. Off road parking for one car.

Contact Macclesfield 01625 502222 £1300.00 pcm

COUNCIL TAX B

EPC D

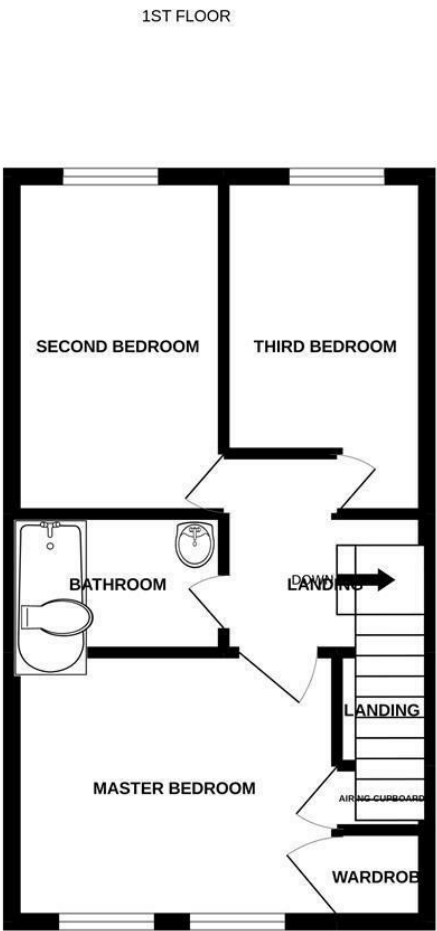
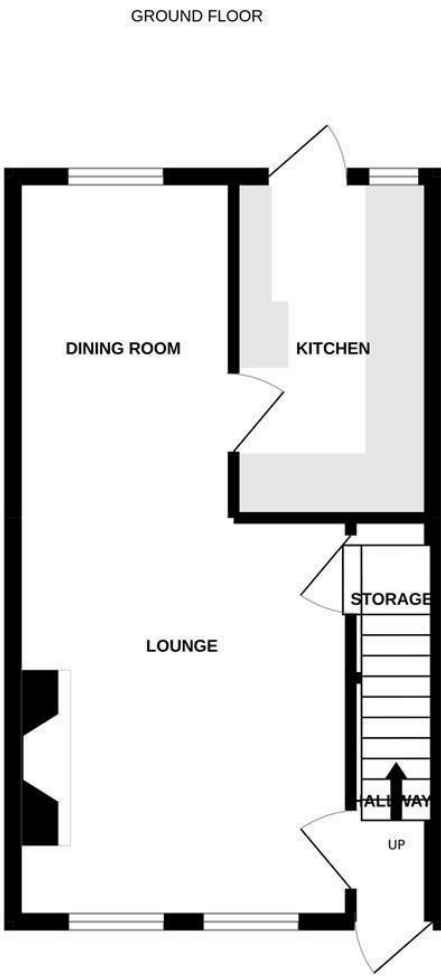
LOCATION

Set in Cheshire's plains, on the fringe of the Peak District National Park, Macclesfield combines the old with the new. Originally a medieval town, Macclesfield became the country's 'Silk' capital in the 1750's, whilst it still retains that heritage, in recent years it has grown to become a thriving business centre. Macclesfield is a modern shopping centre with a range of leisure facilities to suit most tastes. There is a popular monthly Treacle Market which is a bustling Arts, Antiques, Crafts, Food and Drink Market, held on the cobbles of the town centre with around 140 stalls of exceptional food and drink, unique crafts and vintage and information from the Macclesfield community. There are many independent and state primary and secondary schools. The access points of the North West Motorway network system, Manchester International Airport and some of Cheshire's finest countryside are close at hand. Intercity rail links to London Euston and Manchester Piccadilly can be found at Macclesfield and Wilmslow railway stations as well as commuter rail links to the local business centres.

DIRECTIONS

Proceed out of Macclesfield along the Silk Road in a southerly direction, continue through the traffic lights on

to Mill Lane. Proceed along this road until the traffic lights. Turn right onto Coronation Street, next to the One Stop. The property can be found on the right hand side. Postcode: SK11 7PQ.



Measurements are approximate. Not to scale. Illustrative purposes only  
Made with Metropix ©2022

