



jordanfishwick

Hatton Street

£1,550 PCM



Hatton Street, Macclesfield, SK11 6RF

£1,550 PCM

AVAILABLE MID AUGUST UNFURNISHED - VIEWING ESSENTIAL TO APPRECIATE - PLEASE NOTE PHOTOS PICTURED ARE OF THE SHOW HOME

THREE DOUBLE BEDROOM town house complete with QUALITY KITCHEN, STYLISH BATHROOM AND EN-SUITE along with a ROOF TERRACE off the master bedroom, courtyard garden and PRIVATE PARKING for 2 cars.

This select development of townhouses are set back from the road behind a dwarf wall and offer spacious modern and contemporary accommodation within walking distance of the town centre and train station.

Entrance hall with under stairs storage, downstairs W.C, stylish fitted kitchen with electric hob and oven, washer dryer, dishwasher and fridge freezer. The elegant living area opens to the courtyard garden which leads to the allocated parking.

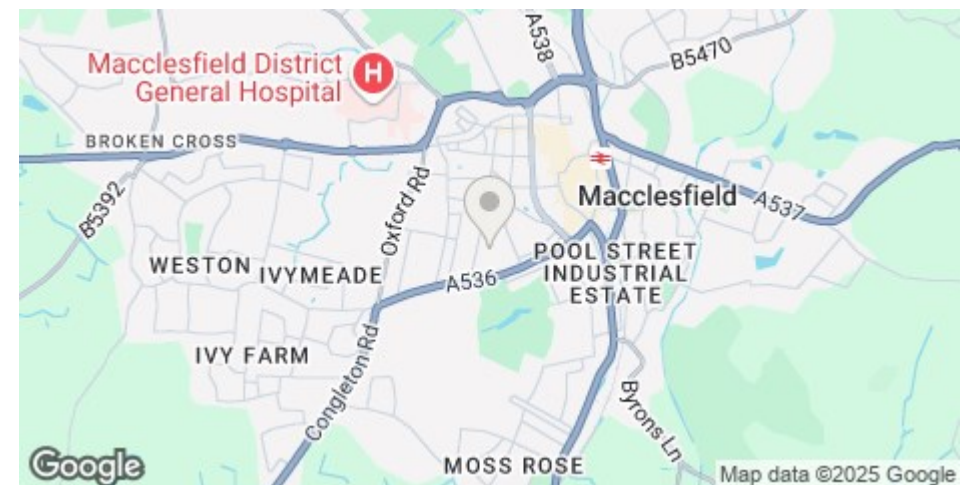
To the first floor are two double bedrooms and a stylishly fitted bathroom with shower over bath.

The second floor offers another spacious double bedroom with French doors opening out to the roof terrace and a stylish ensuite.

Contact Macclesfield 01625 502222 £1550.00 pcm

COUNCIL TAX C

EPC C



- TOWN HOUSE
- THREE BEDROOMS
- ROOF TERRACE
- WALKING DISTANCE OF TOWN CENTRE
- TWO PARKING SPACES
- COUNCIL TAX C
- EPC C

Postcode - SK11 6RF

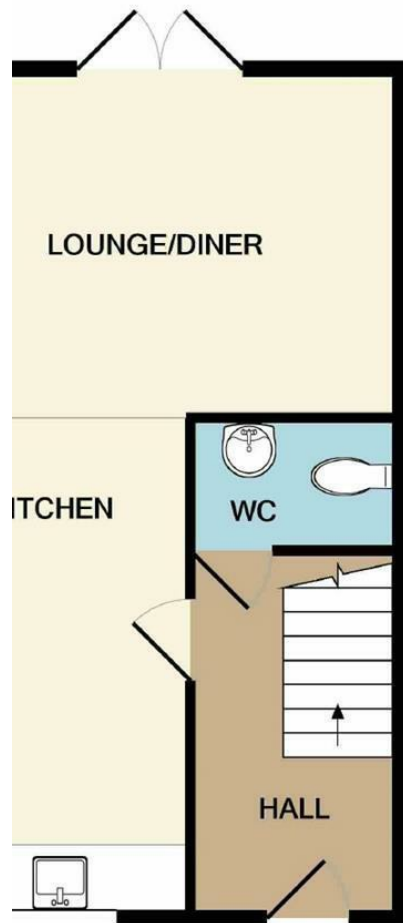
EPC Rating - C

Floor Area - sq ft

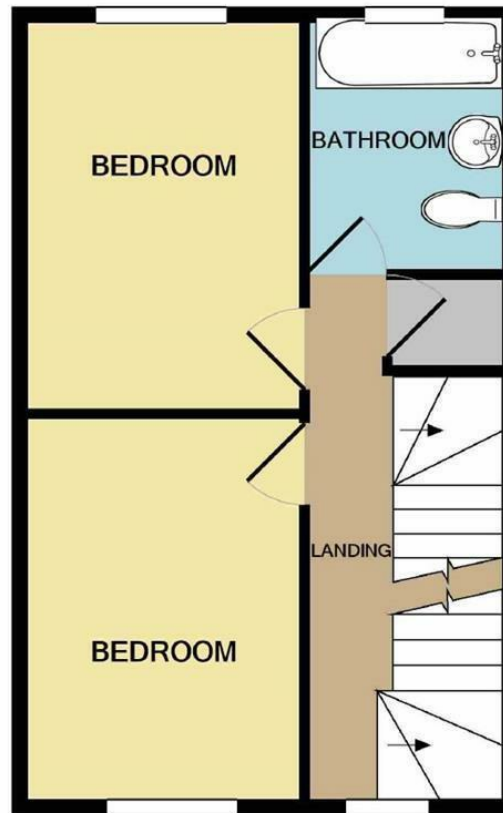
Local Authority - Cheshire East

Council Tax - C





GROUND FLOOR



1ST FLOOR



2ND FLOOR

Measurements are approximate. Not to scale. Illustrative purposes only
Made with Metropix ©2021



These particulars are believed to be accurate but they are not guaranteed and do not form a contract. Neither Jordan Fishwick nor the vendor or lessor accept any responsibility in respect of these particulars, which are not intended to be statements or representations of fact and any intending purchaser or lessee must satisfy himself by inspection or otherwise as to the correctness of each of the statements contained in these particulars. Any floorplans on this brochure are for illustrative purposes only and are not necessarily to scale.

Offices at: Offices at Chorlton, Didsbury, Disley, Hale, Glossop, Macclesfield, Manchester Deansgate, Manchester Whitworth Street, New Mills, Sale, Wilmslow and Withington

01625 502222 letting