



jordan fishwick

Sunnybank Close

£1,300 PCM



**Sunnybank Close,
Macclesfield, SK11 7RJ**
£1,300 PCM



The Property

AVAILABLE NOW PART FURNISHED - VIEWING ESSENTIAL TO APPRECIATE

This **FULLY REFURBISHED** three-bedroom family home is presented in excellent order. Located on this quiet no through road and within walking distance of Macclesfield town centre and the train station this light and airy property also benefits from a front and rear garden.

Entrance porch, open plan lounge dining fully fitted kitchen with understairs storage and door to fully enclosed rear garden.

To the first floor three well-proportioned bedrooms and bathroom with shower over bath.

Contact Macclesfield 01625 502222 £1300.00pcm

COUNCIL TAX B

EPC C

Directions

SK11 7RJ



- THREE BEDROOMS
- QUIET LOCATION
- FRONT AND REAR GARDEN
- FULLY REFURBISHED
- OPEN PLAN LOUNGE KITCHEN DINER
- COUNCIL TAX B
- EPC C

Postcode - SK11 7RJ

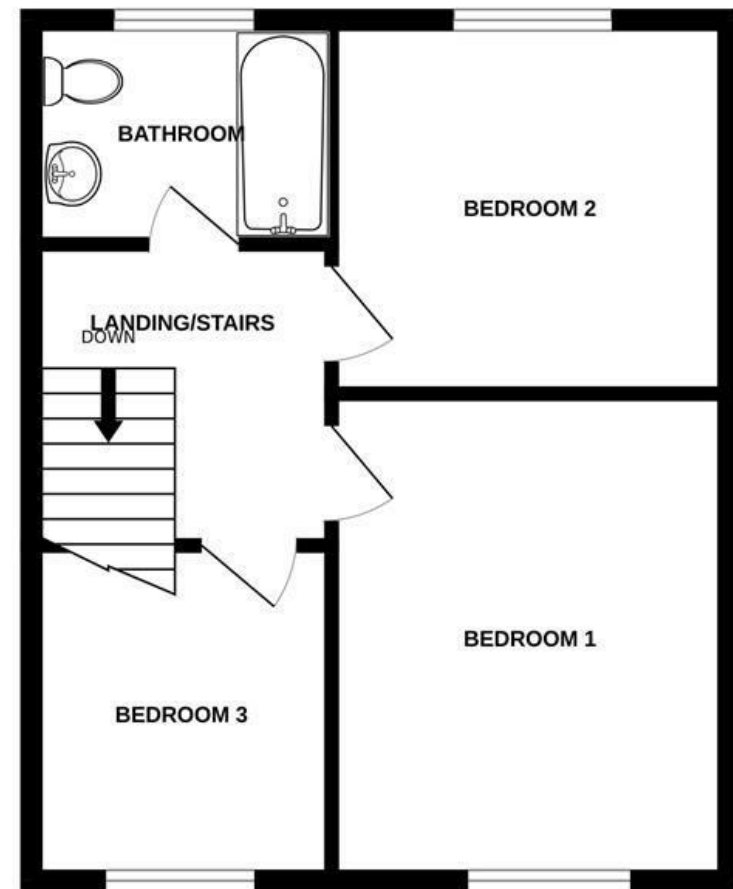
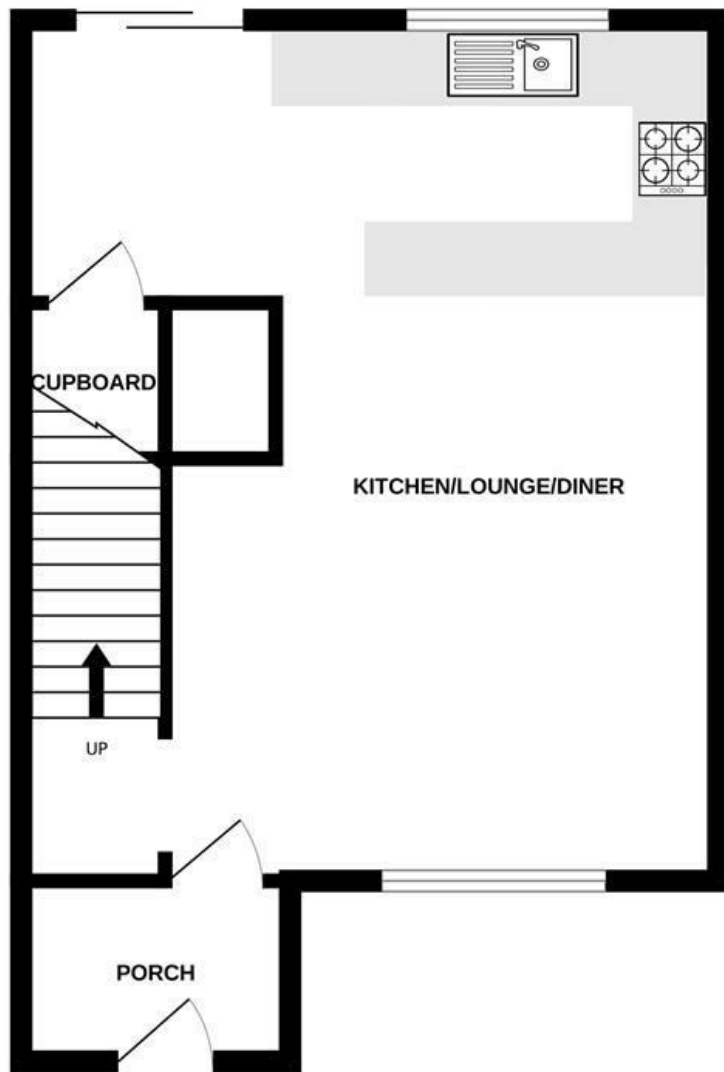
EPC Rating - C

Floor Area - sq ft

Local Authority - Cheshire East

Council Tax - B





These particulars are believed to be accurate but they are not guaranteed and do not form a contract. Neither Jordan Fishwick nor the vendor or lessor accept any responsibility in respect of these particulars, which are not intended to be statements or representations of fact and any intending purchaser or lessee must satisfy himself by inspection or otherwise as to the correctness of each of the statements contained in these particulars. Any floorplans on this brochure are for illustrative purposes only and are not necessarily to scale.

Offices at: Chorlton, Didsbury, Disley, Hale, Glossop, Macclesfield, Manchester Deansgate, Manchester Whitworth Street, New Mills, Sale, Wilmslow and Withington

01625 502222