



jordan fishwick

The Barn

£850 PCM



The Barn, Mount Pleasant, Rainow, SK10 5TJ £850 PCM



The Property

MACCLESFIELD - AVAILABLE EARLY MAY, PART FURNISHED

A beautifully presented two-bedroom property full of character and charm, featuring exposed beams and latch lock doors within the sought after village of Rainow.

In brief, the property comprises; hallway, downstairs bedroom/office, recently fitted dining kitchen, dual aspect living room, inner hallway with walk in cloak room, double bedroom and recently fitted bathroom.

Outside there is a pleasant courtyard garden and two parking spaces.

Contact Macclesfield 01625 502222 £850.00pcm

COUNCIL TAX B

EPC E

Directions

SK10 5TJ



- TWO GOOD SIZED BEDROOMS
- DELIGHTFUL SEMI RURAL POSITION
- COUNTRY KITCHEN WITH RAYBURN
- COURTYARD GARDEN
- OFF ROAD PARKING
- COUNCIL TAX B
- EPC E

Postcode - SK10 5TJ

EPC Rating - E

Floor Area - sq ft

Local Authority - Cheshire East Council

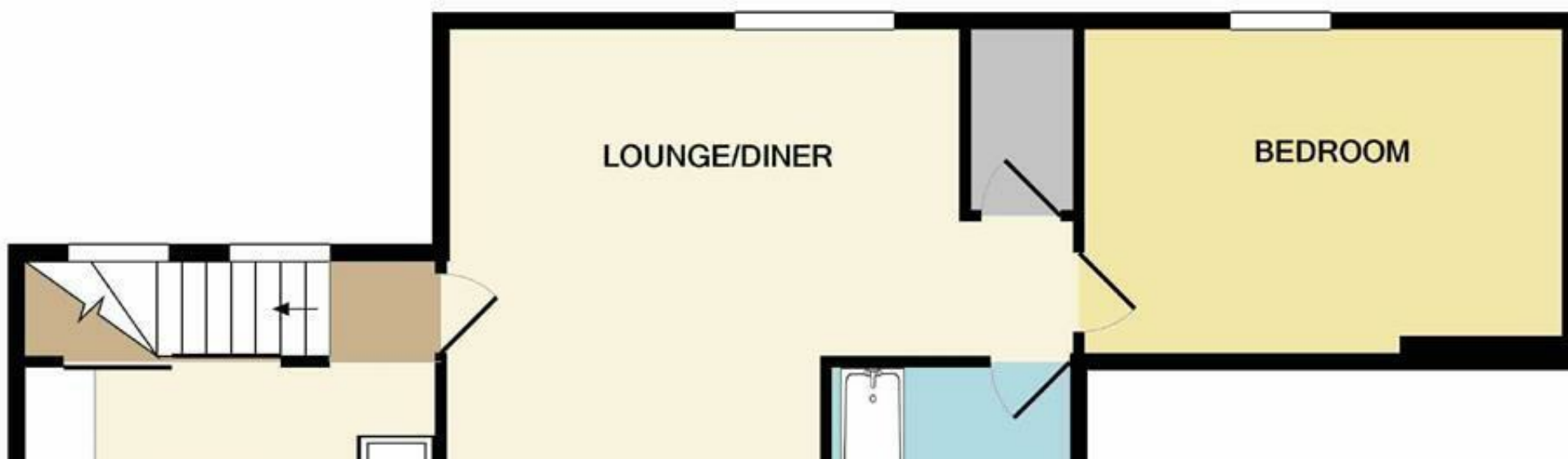
Council Tax - B





GROUND FLOOR

Measurements are approximate. Not to scale. Illustrative purposes only
Made with Metropix ©2020



These particulars are believed to be accurate but they are not guaranteed and do not form a contract. Neither Jordan Fishwick nor the vendor or lessor accept any responsibility in respect of these particulars, which are not intended to be statements or representations of fact and any intending purchaser or lessee must satisfy himself by inspection or otherwise as to the correctness of each of the statements contained in these particulars. Any floorplans on this brochure are for illustrative purposes only and are not necessarily to scale.

Offices at: Chorlton, Didsbury, Disley, Hale, Glossop, Macclesfield, Manchester Deansgate, Manchester Whitworth Street, New Mills, Sale, Wilmslow and Withington

01625 502222