



Plot 1 123 Prestbury Road, Macclesfield, SK10 3QL

These inspired and unique range of properties come complete with QUALITY PORCELAIN BESPOKE KITCHENS, STYLISH BATHROOMS AND EN-SUITES as well as private gardens, PRIVATE PARKING and electric car charging points. Conveniently located within walking distance of excellent schools, the town centre and public transport links. Forming part of a desirable development these delightful homes are beautifully appointed throughout. The highly skilled team have given careful consideration to its detail as to provide a perfect balance for the new occupants, resulting in a distinguished development of considerable merit throughout. The accommodation is split level, and in brief comprises; hallway, living/dining kitchen incorporating many integral appliances. To the lower floor is a bedroom, en-suite bathroom and utility room. To the first floor is a double bedroom and en-suite bathroom. Staircase to the second bedroom and stylish en-suite. The properties come with two parking spaces providing off road parking whilst to the rear there are private fenced and enclosed gardens.

£475,000

Viewing arrangements

Viewing strictly by appointment through the agent

01625 434000

Location

Prestbury Road is long established as a favourable and sought after location. A prime residential area given its abundance of established properties. A befitting location therefore for this outstanding dwelling. Apart from the obvious attributes of the property given its spacious accommodation and landscaped Southerly facing rear garden is the close proximity of the local shops, excellent schools, West Park as well as within a short stroll of the centre of town. Macclesfield town centre itself is a modern shopping centre with a range of leisure facilities to suit most tastes. Macclesfield is a modern shopping centre with a range of leisure facilities to suit most tastes. There is a popular monthly Treacle Market which is a bustling Arts, Antiques, Crafts, Food and Drink Market, held on the cobbles of the town centre with around 140 stalls of exceptional food and drink, unique crafts and vintage and information from the Macclesfield community. There are many independent and state primary and secondary schools. The access points of the North West Motorway network system, Manchester International Airport and some of Cheshire's finest countryside are close at hand. Intercity rail links to London Euston and Manchester Piccadilly can be found at Macclesfield and Wilmslow railway stations as well as commuter rail links to the local business centres.

Directions

Leaving Macclesfield in a northerly direction along Prestbury Road, continue over the mini-roundabout at the junction with Victoria Road. Turn right after a short distance onto Silvan Court just before Bollinbrook Road.

Entrance Hallway

Built in cloaks cupboard. Recessed ceiling spotlights. Stairs down to the lower floor and stairs to the first floor.

Family/Dining Kitchen

20'5 x 14'3

Impressive fully fitted porcelain bespoke kitchen complete with a comprehensive range of handleless "soft close" base units with Corian works surfaces over and matching wall mounted cupboards and a feature Island unit. Underhung stainless steel sink unit with mixer tap. AEG built in double oven. Integrated dishwasher and fridge/freezer all with matching cupboard front. The island unit features a breakfast bar with stool recess and AEG four ring induction hob. TV point and USB sockets. Attractive flooring through to the living/dining area. Recessed ceiling spotlights. Double glazed window and door to the garden. Two radiators.

Stairs Down To The Lower Floor

Built in storage cupboard. Recessed ceiling spotlights. Radiator.

Bedroom Two

17'4 x 14 max

Double bedroom with double glazed window to the rear aspect. TV point and USB sockets. recessed ceiling spotlights. Radiator.

En-Suite Bathroom

Fitted with a contemporary white suite comprising; tiled panelled bath, push button low level WC and vanity wash basin with mixer tap. Tiled floor and walls. Chrome ladder style radiator. Recessed ceiling spotlight.

Utility Room

8'1 x 4'6

Fitted with a range of base units with work surfaces over and matching wall mounted cupboards. Space for a washing machine and tumble dryer. Tiled floor. recessed ceiling spotlights. Radiator.

Stairs To The First Floor

Double glazed window to the front aspect. Recessed ceiling spotlights. Stairs to the second floor. Radiator.

Bedroom One

14'8 x 17'6 max

Double bedroom with ample space for a double bed and wardrobes. Two double glazed windows to the rear aspect. TV point and USB sockets. Recessed ceiling spotlights. Radiator.

En-Suite Bathroom

Fitted with a contemporary white suite comprising; tiled panelled bath with shower over and screen to the side, push button low level WC and vanity wash basin with mixer tap. Tiled floor and walls. Chrome ladder style radiator. Recessed ceiling spotlight.

Stairs To The Second Floor

Bedroom Three

26'0 x 11'4 max

Double bedroom with ample space for a king size bed and wardrobes. Skylight window. TV point and USB sockets. Recessed ceiling spotlights. Radiator.

En-Suite Shower Room

Walk in shower cubicle, push button low level WC and vanity wash hand basin. Exposed beam. Tiled walls and floor. Recessed ceiling spotlights. Chrome ladder style radiator.

Outside

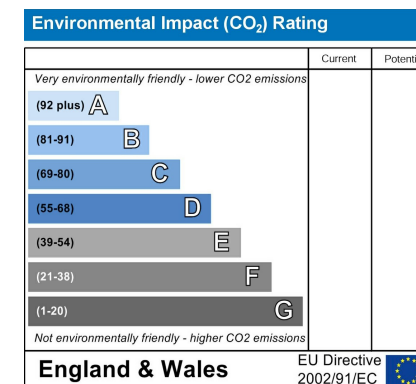
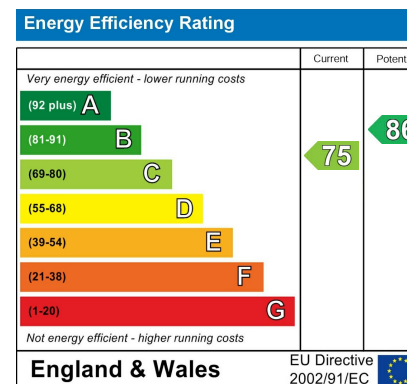
Parking

The property comes with two allocated parking spaces.

Garden

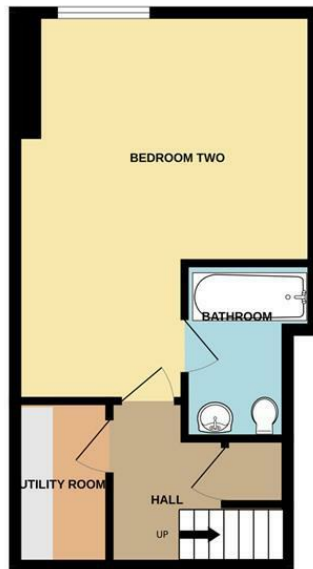
To the rear is a low maintenance fenced and enclosed garden with a stone patio and steps down to the lawned garden. A courtesy gate to the rear.

Tenure

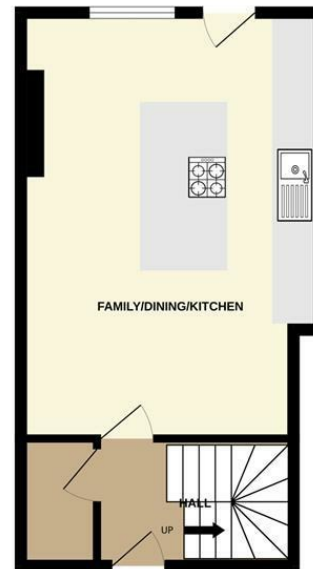




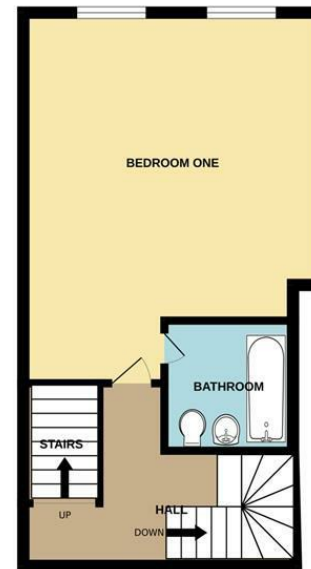
BASEMENT



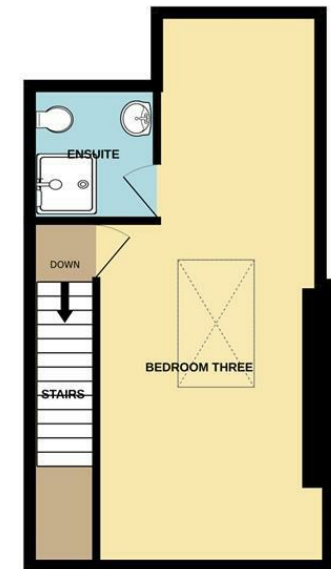
GROUND FLOOR



1ST FLOOR



2ND FLOOR



Measurements are approximate. Not to scale. Illustrative purposes only
Made with Metropix ©2024



These particulars are believed to be accurate but they are not guaranteed and do not form a contract. Neither Jordan Fishwick nor the vendor or lessor accept any responsibility in respect of these particulars, which are not intended to be statements or representations of fact and any intending purchaser or lessee must satisfy himself by inspection or otherwise as to the correctness of each of the statements contained in these particulars. Any floorplans on this brochure are for illustrative purposes only and are not necessarily to scale.

Offices at: Chorlton, Didsbury, Disley, Hale, Glossop, Macclesfield, Manchester Deansgate, Manchester Whitworth Street, New Mills, Sale, Wilmslow and Withington

01625 434000

macclesfield@jordanfishwick.co.uk
www.jordanfishwick.co.uk

