



*jordanfishwick*

Brackenwood Mews

£795 PCM





## Brackenwood Mews, Wilmslow, SK9 2QG

**£795 PCM**

Situated on the popular Summerfields estate, this modernised ground floor studio apartment would appeal to the single professional, looking for a base with good access to surrounding towns and motorway networks.

Presented in excellent order and AVAILABLE MID FEBRUARY ON A FURNISHED BASIS this ground floor studio apartment is sure to be in high demand.

The property comprises: main entrance hall with private letter boxes, inner entrance hall, bathroom with shower cubicle and wc, "L" shaped lounge with bedroom area and double bed, modern fitted kitchen with gas hob and electric oven, washing machine and fridge freezer

The property is heated with modern electric heating and has UPVC double glazing throughout.

Off road parking. Communal gardens.

Wilmslow 01625 536300 £795.00pcm

COUNCIL TAX A

EPC D

### LOCATION

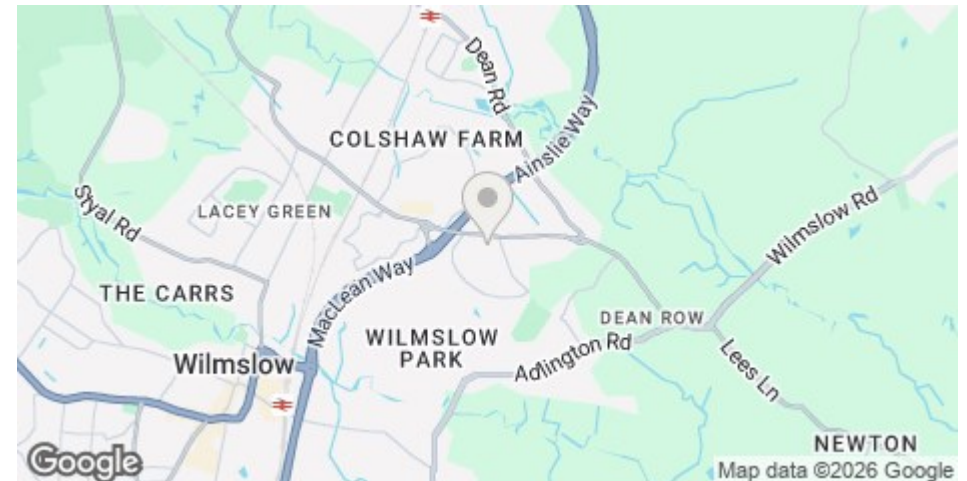
Brackenwood Mews always proves to be a popular location with a great community feel and only a short walk to the Summerfields shopping centre.

Jordan Fishwick Estate and Letting Agents Wilmslow office is located in a prime position central to the bustling and stylish town centre. With our impressive frontage it's impossible to miss our attractive office. Managed by Guy Grainger, Partner, who has been an Estate Agent since 1980, and has a wealth of local knowledge and experience With busy sales and lettings departments all under the same roof along with our independent mortgage advisor on hand the Wilmslow branch has everything you need to help with your sales or lettings transactions. Knowledgeable and friendly staff also compliment the range of services we offer and we are known throughout the Wilmslow area for our proactive approach in helping people find their dream home

### DIRECTIONS

From our Wilmslow office proceed north on Alderley road until you reach the traffic lights , take a right onto Manchester Road when you reach the roundabout take the third exit onto Bollin Valley Link and at the next roundabout take the first exit onto the A34 , proceed until the next round about and take the first exit onto Dean row at the next roundabout take the fourth exit onto Dean Row Road , proceed to the next set of traffic lights where you will be taking the right turn onto Pinewood Road then the first left onto Larchwood Drive, in 200 yards turn left then in 80 yards take a left again, Brackenwood Mews will be on your right hand side

POSTCODE - SK9 2QG





- STUDIO APARTMENT
- PRESENTED IN EXCELLENT ORDER
- OFF ROAD PARKING
- WALKING DISTANCE OF WILMSLOW
- COUNCIL TAX A
- EPC D

Postcode - SK9 2QG

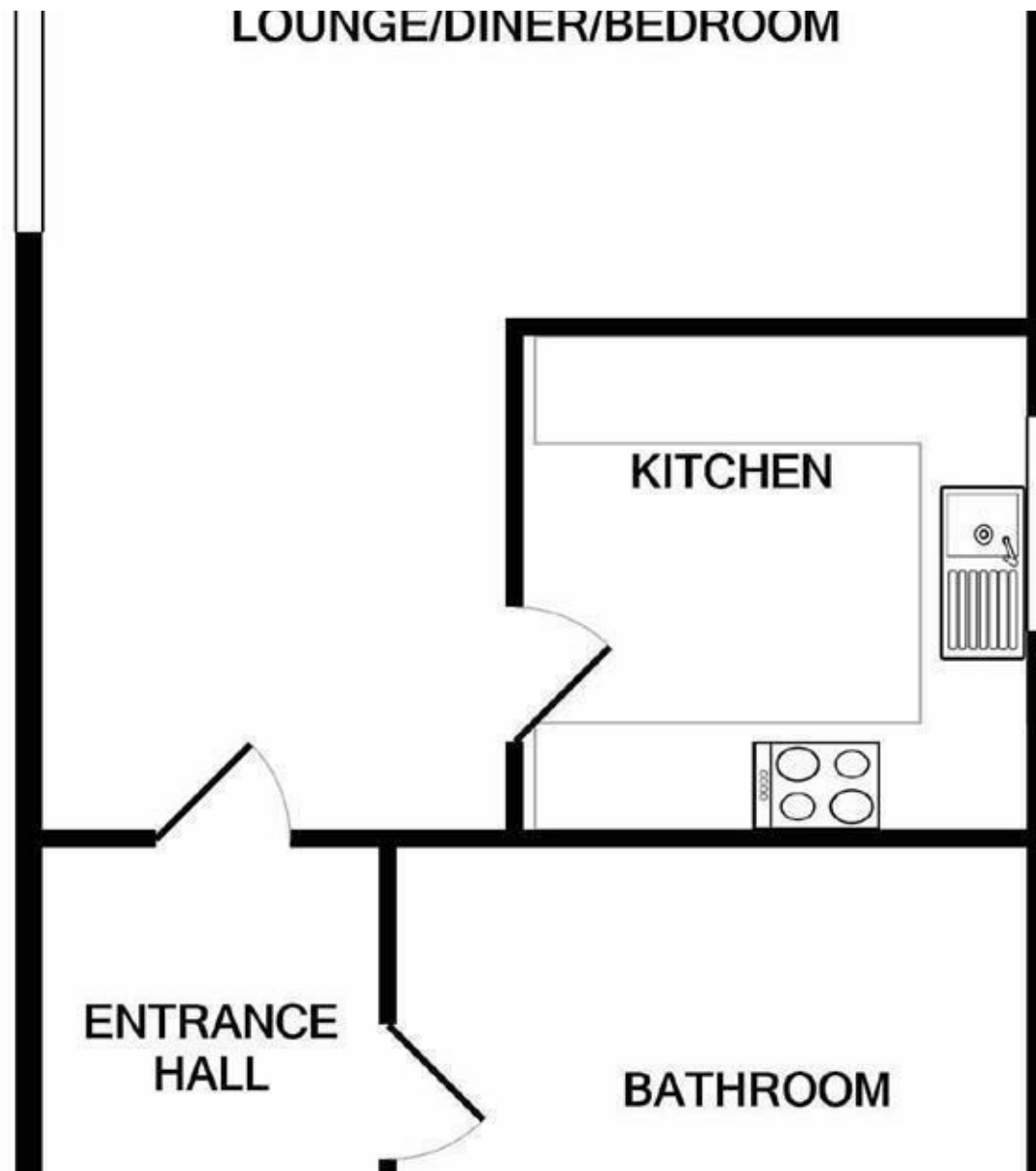
EPC Rating - D

Floor Area - sq ft

Local Authority - Cheshire East

Council Tax - A





These particulars are believed to be accurate but they are not guaranteed and do not form a contract. Neither Jordan Fishwick nor the vendor or lessor accept any responsibility in respect of these particulars, which are not intended to be statements or representations of fact and any intending purchaser or lessee must satisfy himself by inspection or otherwise as to the correctness of each of the statements contained in these particulars. Any floorplans on this brochure are for illustrative purposes only and are not necessarily to scale.

Offices at: Offices at Chorlton, Didsbury, Disley, Hale, Glossop, Macclesfield, Manchester Deansgate, Manchester Whitworth Street, New Mills, Sale, Wilmslow and Withington

01625 536300